

MOVE-IN READY!

**TWO-STORY FOYER, MAIN FLOOR MULTI-PURPOSE ROOM, AND
GRAND BUTLER'S PANTRY! LUXURY INCLUSIONS ARE OUR
STANDARD.**

Now Only \$784,995

Tehaleh / **Lot 4-14** / 19037 131st Street Court E, Bonney Lake

Edina Home Design / 2889 Square Feet / 4 Beds / 2.5 Baths / 2 Cars



** Image shows the Edina N Facade in Pebble color scheme and should be used as a guide only.*

* This home is built in the N Facade Reverse Pebble Color Scheme

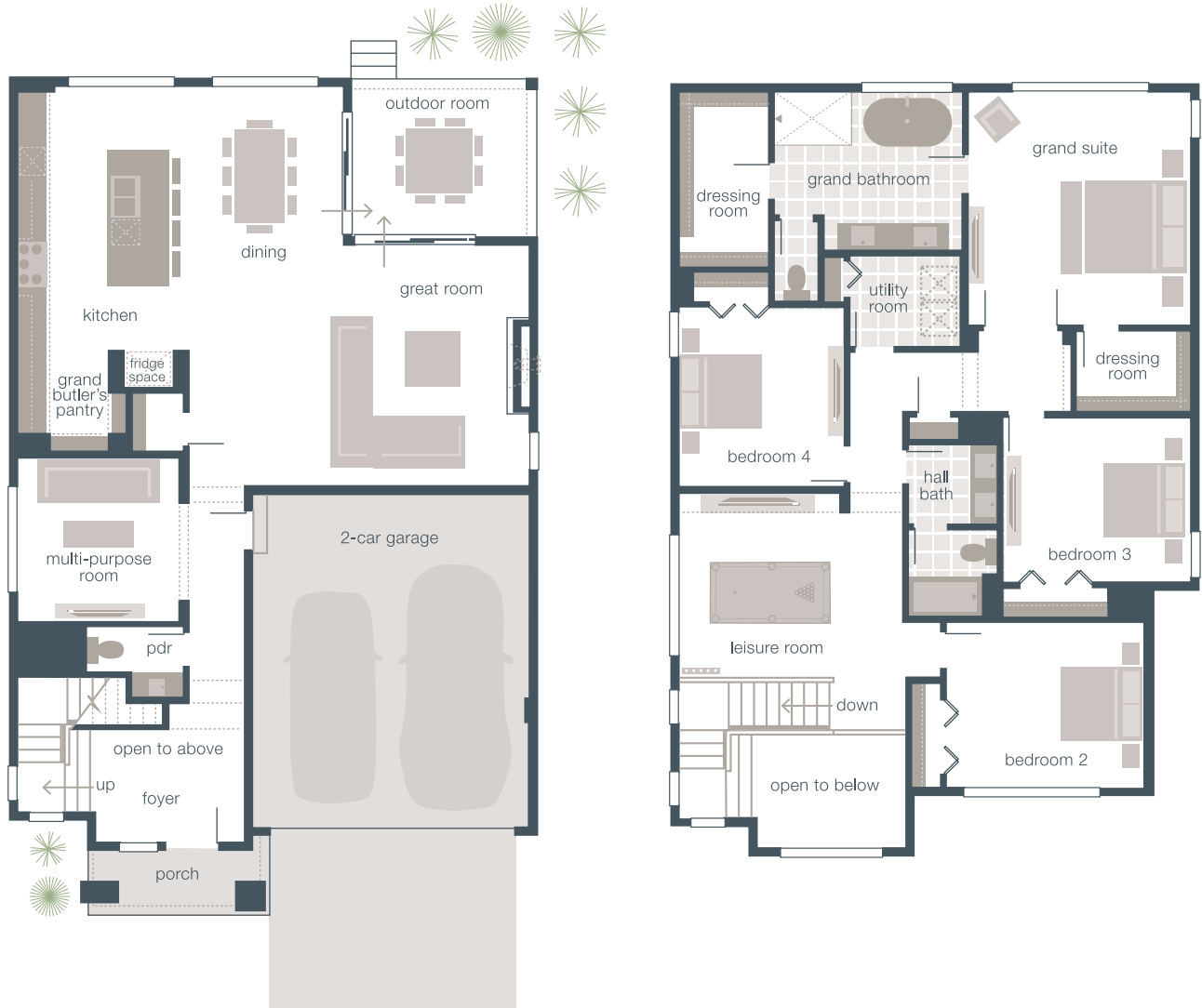
1.800.764.8171 MAINVUEHOMES.COM

MLS# 2145187. Represented by TeamBuilder KW. Prices and availability are subject to change without notice. Photos are for illustrative purposes and should be used as a guide. Please speak with a MainVue Sales Consultant for more details on this home. Effective 10.16.2023

Edina Home Design

Included Selections:

Exterior Color Scheme: Reverse Pebble, Interior Color Scheme Pebble, Facade: N, Pre-Wired for Air Conditioning, Gas BBQ Stub at Outdoor Room



The finished square footage areas provided are calculated based on ANSI Z765-2013 standards as commissioned by National Association of Home Builders (NAHB). Finished square footage calculations were made based on plan dimensions only and may vary from the finished square footage of the house as built. Finished square footages vary based on elevation styles and plan options.