

# MOVE-IN READY

LIMITED  
OPPORTUNITY!

RATES AS LOW AS

**4.375%**

4.174% APR\*



**GREENVALE / LOT 13 / EMERSON**  
30362 111th CT SE, Auburn WA 98092  
\$944,995

3003 Square Feet  
4 Beds / 2.5 Baths / 3 Cars

Signature Outdoor Room, Den, Multi-  
Purpose Room, Leisure Room

7 YEAR ARM:

**4.375%**  
4.174% APR\*

OR

30 YEAR FIXED:

**4.75%**  
4.812% APR\*

*Luxury Model Home with exclusive model-only upgrades included. Ask us for a complete list!*

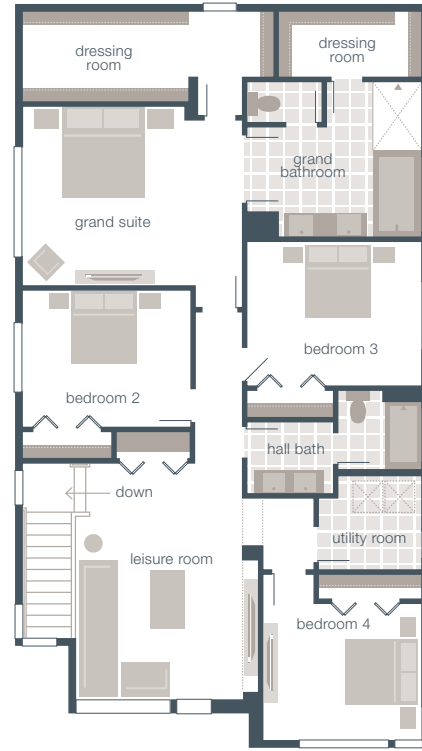
Greenvale Information Center open weekends 11am - 6pm or call to schedule a tour! 1.800.764.8171

**MAINVUEHOMES.COM**

Represented by Teambuilder KW. Promotions and offers are available on select move-in ready homes through preferred lender. Pricing, availability, and specifications are subject to change without notice. For \*Limited Time Low Rate offer, Buyer must sign an agreement of sale no later than 8.28.22 and close by 9.29.2022. The low rates advertised, and payment quotes, are based on a 740 credit score with a 20% down payment, and additional rate buydown. Estimated Total Housing Payment includes estimated property taxes & insurance. Funds for additional rate buydown are provided to the buyer in form of Seller Credit prior to closing. Additional incentives available with our preferred lender. Photos are for illustrative purposes and should be used as a guide only. Effective 7.11.2022



**SIGNATURE OUTDOOR ROOM, DEN, MULTI-PURPOSE ROOM, LEISURE ROOM**



**INCLUDED EXCLUSIVE MODEL-HOME ONLY UPGRADES:**

- ✓ Enhanced landscaped yard with extra supersized planters in front and rear landscaping
- ✓ Front and rear irrigation
- ✓ Signature Outdoor Room with full height tile fireplace
- ✓ Security System
- ✓ Complete air conditioning
- ✓ Electrolux Refrigerator
- ✓ Wall treatments including wallpaper and accent paint
- ✓ Curtain window treatments
- ✓ Blinds in all secondary bedrooms
- ✓ Wall mounted TV
- ✓ Custom built-ins
- ✓ Hanging artwork

\*The finished square footage areas provided are calculated based on ANSI Z765-2013 standards as commissioned by National Association of Home Builders (NAHB). Finished square footage calculations were made based on plan dimensions only and may vary from the finished square footage of the house as built. Finished square footages vary based on elevation styles and plan options.

