



MAINVUE[®]
HOMES

WILLOW
HOME DESIGN

WILLOW

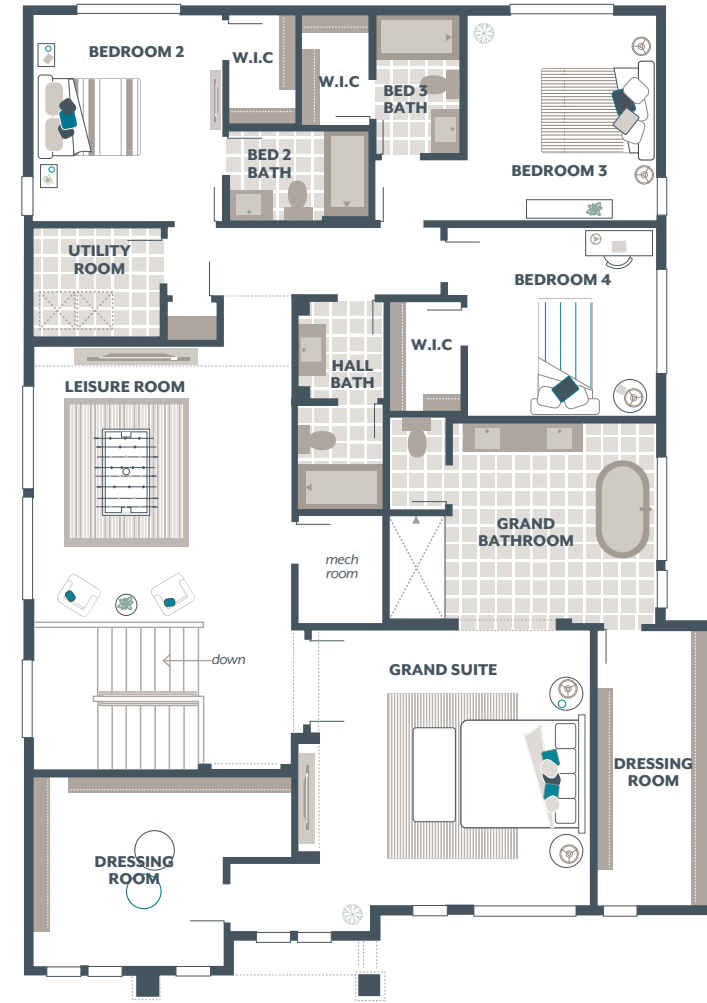
3,633 Square Feet / 4 🚗 / 4.5 🚗 / 2 🚗

- Signature Outdoor Room
- Home Office
- Grand Butler's Pantry
- Leisure Room

Main Floor:	1,389
Upper Floor:	2,048
Outdoor Room:	196
TOTAL:	3,633
Garage:	430

AVAILABLE OPTIONS:

- Bedroom 5 in lieu of Leisure Room
- 3/4 Bath in lieu of Powder Room



MAINVUEHOMES.COM

*Total square footage includes Signature Outdoor Room. Photos are illustrative of final product and should be used as a guide. The finished square footage areas provided are calculated based on ANSI Z765-2013 standards as commissioned by National Association of Home Builders (NAHB). Finished square footage calculations were made based on plan dimensions only and may vary from the finished square footage of the house as built. Finished square footages vary based on elevation styles and plan options.