



MAINVUE<sup>®</sup>  
HOMES

**SPIREA**  
HOME DESIGN

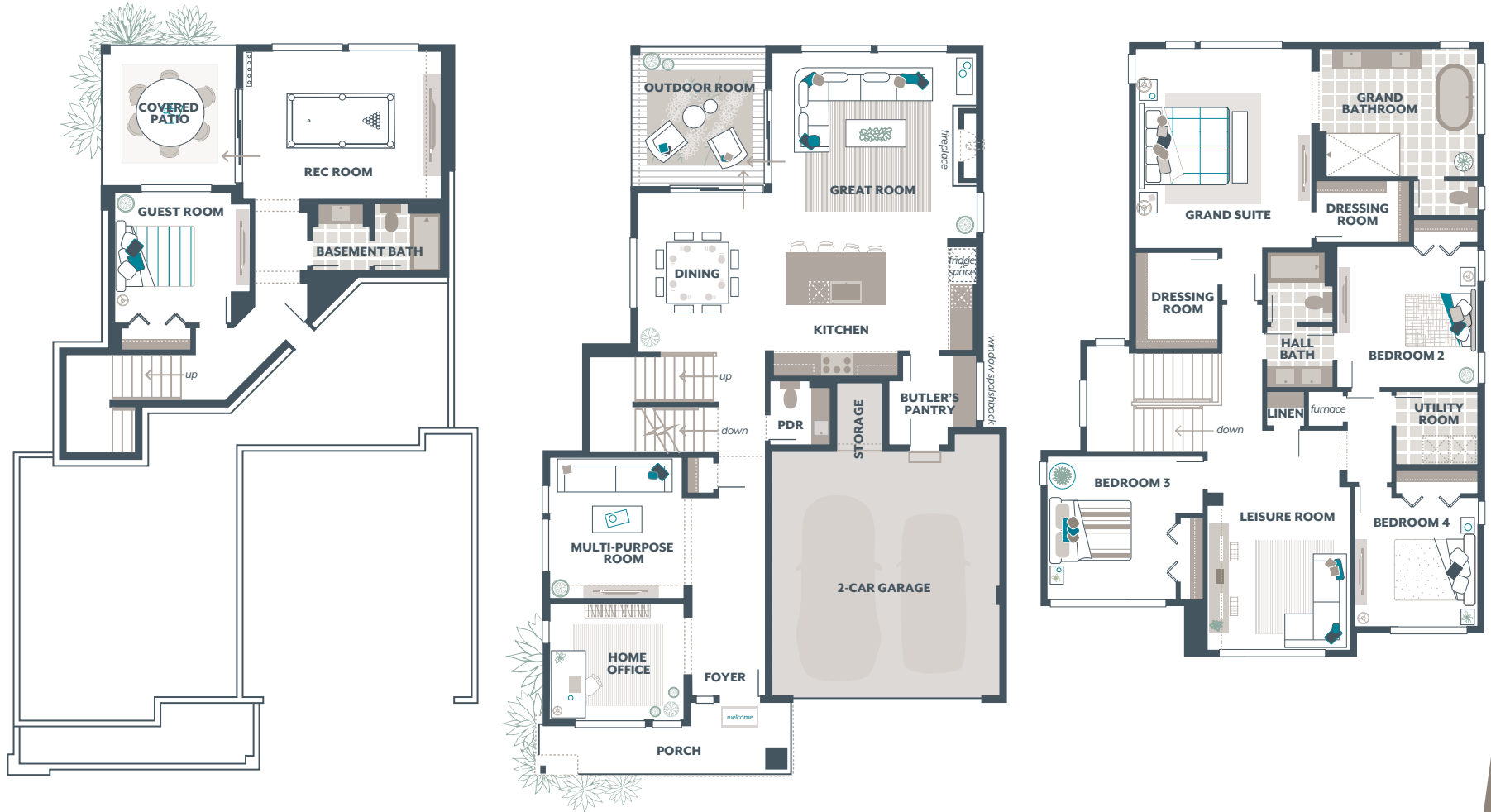
# SPIREA 3,832 Square Feet / 5 🛏 / 3.5 🚿 / 2 🚗

- Signature Outdoor Room
- Home Office
- Multi-Purpose Room
- Butler's Pantry
- Recreation Room
- Leisure Room
- Guest Room
- Garage Storage

Basement Floor	689
Main Floor:	1,350
Upper Floor:	1,655
Outdoor Room:	138
<b>TOTAL:</b>	<b>3,832</b>
Garage:	461

## AVAILABLE OPTIONS:

- Bedroom 6 in lieu of Leisure Room
- Bedroom 2 Bathroom in lieu of Walk-in Closet
- Guest Room with Ensuite in lieu of Home Office and Multi-Purpose Room



**MAINVUEHOMES.COM**

\*Total square footage includes Signature Outdoor Room. Photos are illustrative of final product and should be used as a guide. The finished square footage areas provided are calculated based on ANSI Z765-2013 standards as commissioned by National Association of Home Builders (NAHB). Finished square footage calculations were made based on plan dimensions only and may vary from the finished square footage of the house as built. Finished square footages vary based on elevation styles and plan options.