



MAINVUE<sup>®</sup>  
HOMES

**JUNIPER**  
HOME DESIGN

# JUNIPER

3,139 Square Feet / 4 🛏 / 2.5 🚿 / 2 🚗

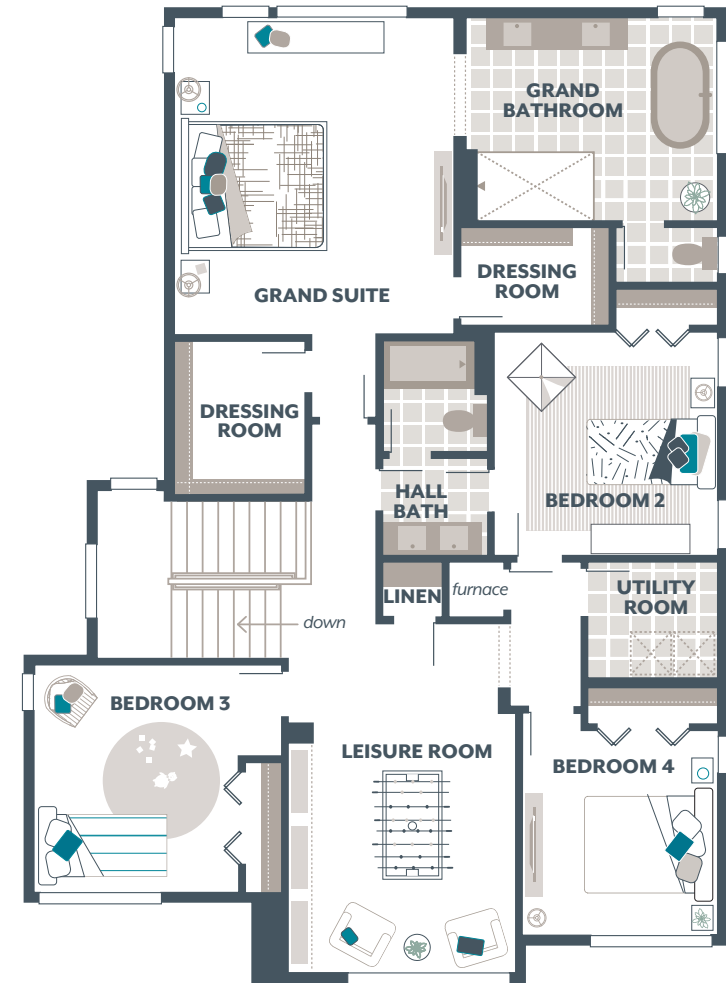
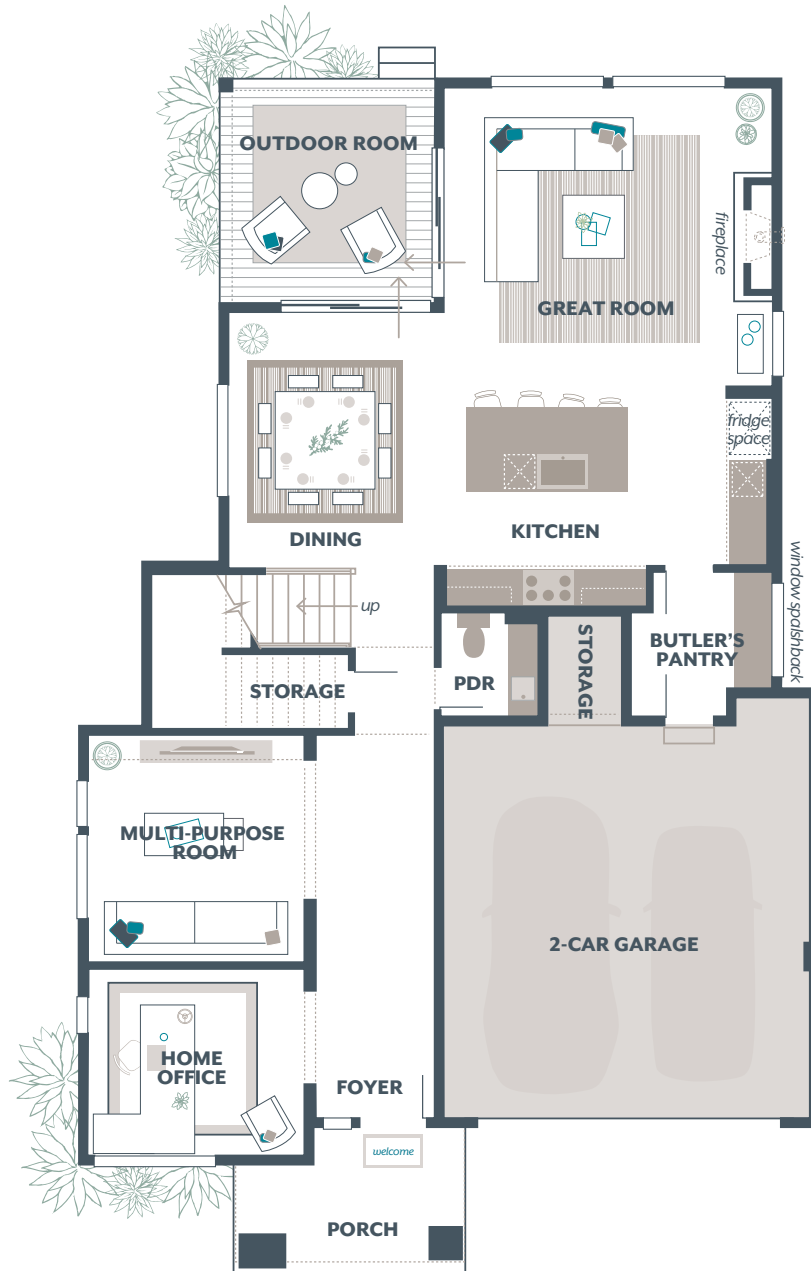
ON DISPLAY AT THE WORLD OF MODEL HOMES®

- Signature Outdoor Room
- Home Office
- Multi-Purpose Room
- Butler's Pantry
- Leisure Room
- Garage Storage

Main Floor:	1,349
Upper Floor:	1,652
Outdoor Room:	138
<b>TOTAL:</b>	<b>3,139</b>
Garage:	461

### AVAILABLE OPTIONS:

- Guest Room with Ensuite in lieu of Home Office and Multi-Purpose Room
- Bedroom 2 Bathroom in lieu of Walk-In Closet
- Bedroom 5 in lieu of Leisure Room



[MAINVUEHOMES.COM](http://MAINVUEHOMES.COM)

\*Total square footage includes Signature Outdoor Room. Photos are illustrative of final product and should be used as a guide. The finished square footage areas provided are calculated based on ANSI Z765-2013 standards as commissioned by National Association of Home Builders (NAHB). Finished square footage calculations were made based on plan dimensions only and may vary from the finished square footage of the house as built. Finished square footages vary based on elevation styles and plan options.