

3966 SQUARE FEET



4



2.5



2

TENNYSON

Lower Floor 646 sf

Main Floor 1387 sf

Upper Floor 1753 sf

Outdoor Room 180 sf

3966 total sf*

Garage 415 sf

4 Bedrooms

2.5 Baths

2 Car Garage

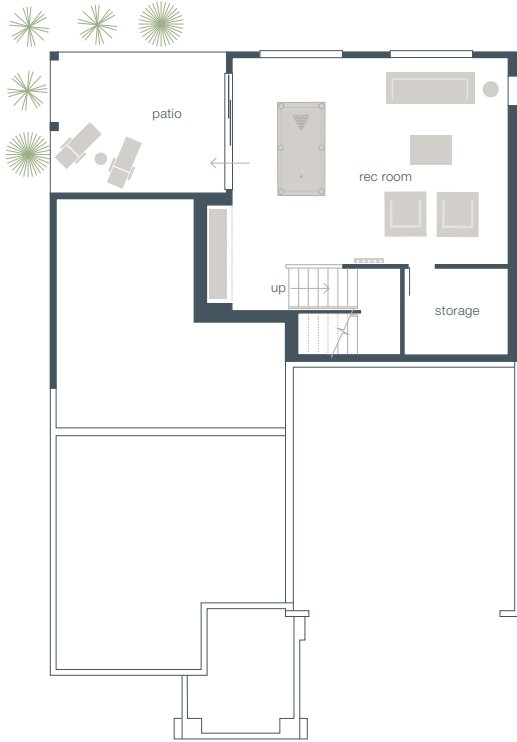
Outdoor Room

Leisure Room

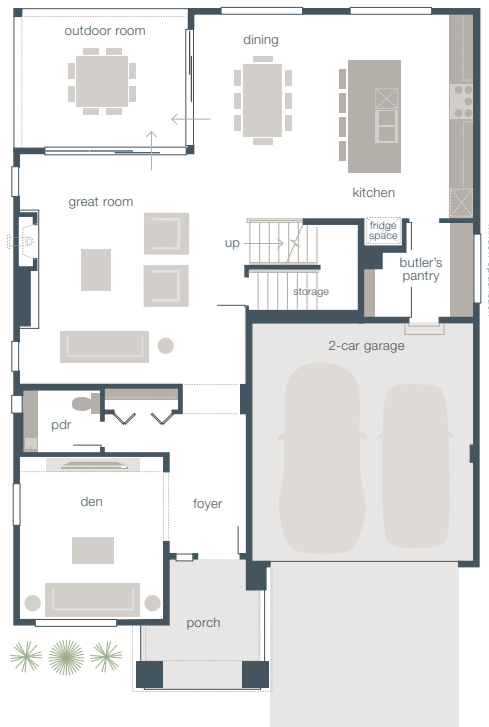
Butler's Pantry

Den

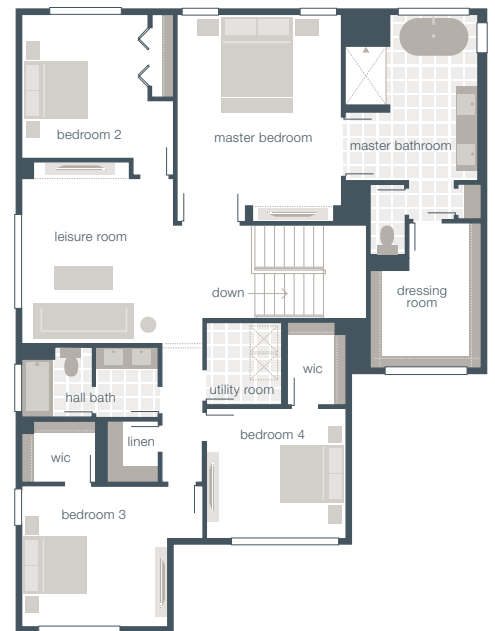
Rec Room



LOWER FLOOR



MAIN FLOOR



UPPER FLOOR

ASK US ABOUT AVAILABLE
OPTIONS AND FACADES

MAINVUETM
HOMES
mainvuehomes.com



*Photos shown are used for illustrative purposes only and may not be an exact representation of the product. Facade and color scheme are subject to change. The finished square footage areas provided are calculated based on ANSI Z765-2013 standards as commissioned by National Association of Home Builders (NAHB). Finished square footage calculations were made based on plan dimensions only and may vary from the finished square footage of the house as built. Finished square footages vary based on elevation styles and plan options. Total square footage used in marketing includes the outdoor room. Contact our sales consultants for specific details.