

The background image shows a bright, modern interior. On the left, a fireplace with a grey stone surround contains a fire. Above it, two silver decorative vases sit on a shelf. To the right, a dining table is set with white dishes, glasses, and a centerpiece of white roses in a glass vase. Large windows in the background offer a view of greenery outside. A black metal light fixture with three bulbs hangs from the ceiling on the right.

MAINVUE[®] HOMES

the difference is everywhere.





MAINVUE HOMES
*redefining
luxury.*



MAINVUE HOMES

*a new view
on living.*







MAINVUE HOMES

*luxury has a
new address.*





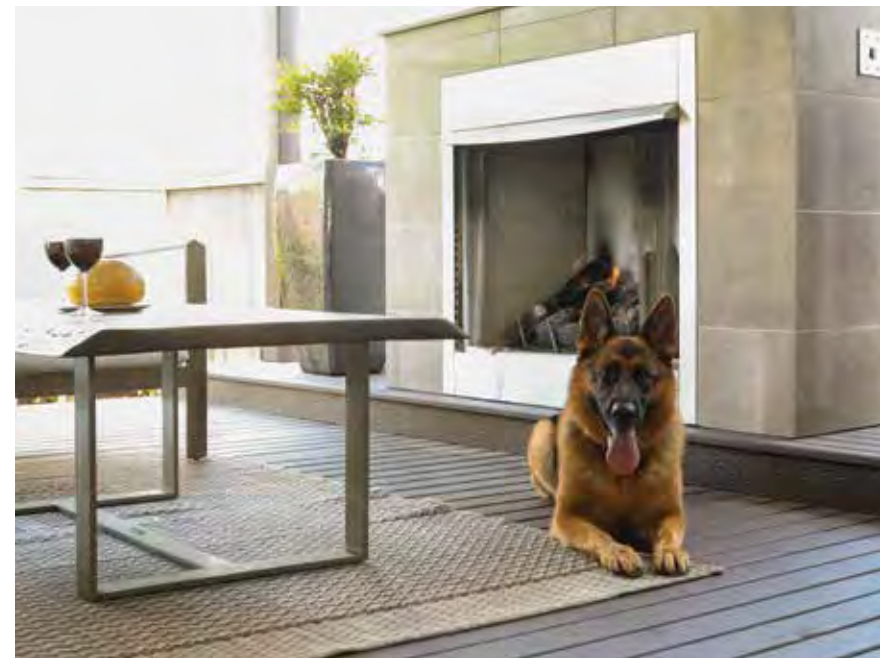
CONTENTS

MAINVUE STORY	12
MAINVUE DISTINCTION	18
THE MAINVUE DIFFERENCE	21
OUR MAINVUE WAY	27-30
WHOLE HOME EFFICIENCY	31-32
WORLD OF MODEL HOMES	33-34
COMMUNITIES	37-38
FACADE COLLECTIONS	39-42
LUXURY INCLUSIONS ARE OUR STANDARD	43-58
COLOR SCHEMES	59-62
MULTI-GENERATION LIVING OPTIONS	65-68
HOME DESIGNS	69-70
MONET: 1972 Square Feet, 3 Bedrooms, 1.75 Baths, 2 Car Garage, Rambler Design	71-74
WINCHESTER V3: 2372 Square Feet, 3 Bedrooms, 2.5 Baths, 2 Car Garage	75-78
BERKELEY: 2675 Square Feet, 4 Bedrooms, 2.5 Baths, 2 Car Garage	79-82
AMBIA V3: 2686 Square Feet, 4 Bedrooms, 2.5 Baths, 2 Car Garage	83-86
ELLINGTON: 2986 Square Feet, 3 Bedrooms, 2.5 Baths, 2 Car Garage	87-90
SENTOSA: 3073 Square Feet, 4 Bedrooms, 2.5 Baths, 2 Car Garage	93-96
HAVANNA: 3130 Square Feet, 4 Bedrooms, 2.5 Baths, 2 Car Garage	97-100
LYRA: 3151 Square Feet, 4 Bedrooms, 2.5 Baths, 2 Car Garage	101-104
AMBIA V2: 3154 Square Feet, 4 Bedrooms, 2.5 Baths, 2 Car Garage	105-108
HUDSON: 3262 Square Feet, 4 Bedrooms, 2.5 Baths, 2 Car Garage	109-112
VANTAGE: 3394 Square Feet, 4 Bedrooms, 2.5 Baths, 3 Car Garage	115-118
MARCELLO: 3499 Square Feet, 4 Bedrooms, 2.5 Baths, 2 Car Garage	119-122
NEWPORT: 3514 Square Feet, 4 Bedrooms, 2.5 Baths, 2 Car Garage	123-126
GLENDALE: 3565 Square Feet, 4 Bedrooms, 2.5 Baths, 3 Car Garage	127-130
BANKSIA: 3824 Square Feet, 4 Bedrooms, 3.5 Baths, 3 Car Garage	131-134
LAWSON: 3889 Square Feet, 4 Bedrooms, 4.5 Baths, 2 Car Garage	137-140
ASTORIA: 4026 Square Feet, 4 Bedrooms, 3.5 Baths, 2 Car Garage	141-144
AVOCA: 4078 Square Feet, 4 Bedrooms, 3.5 Baths, 3 Car Garage	145-148
DUXTON: 4102 Square Feet, 4 Bedrooms, 4.5 Baths, 2 Car Garage	149-152
DEVLON: 4126 Square Feet, 4 Bedrooms, 4.5 Baths, 2 Car Garage	153-156
ELDESSA: 4241 Square Feet, 4 Bedrooms, 4.5 Baths, 2 Car Garage	157-160
TESTIMONIALS	161-162









MAINVUE HOMES

*signature outdoor
rooms.*



MAINVUE HOMES

*the new alternative
in home design.*



THE MAINVUE STORY

the difference is everywhere.

From each angle and every perspective, MainVue Homes is raising the bar on home designs and living. Proven by its practices and dynamic by design, this trusted combination is just part of the reason MainVue Homes is a worldwide leader in premier residential design and construction. As part of the internationally respected Henley Properties Group, we are a proud partner of the Sumitomo Forestry Group, a venerable corporation with its own rich 320-plus-year heritage. Our global relationship now builds homes for more than 13,000 homebuyers a year. This success spans from Australia to Japan and – most recently – to the United States.

Using our international buying power, MainVue assures customers access to grand homes with superb value, fur-

ther enhanced by exceptional – and occasionally unexpected – designer features. Now, MainVue is broadening this vision. While still growing our Seattle success, we're also continuing to expand in the Lone Star State. What you'll find are Texas-worthy collections of communities and dynamic plans added to the greater Dallas area.

Our refined commitment: to build bold, distinctive and definitively modern new homes that capture the true meaning of luxury. The fresh results? Luxury designs that are thoughtfully crafted for homebuyers in both important regions, with incredible value and chic designer features that are not only within reach, but offer our full selection of exquisite luxury inclusions at no extra cost. Each collection is

meant to complement the proud – and specific – needs and tastes of refined homebuyers in each of our geographical regions.

But we know it's not just about feeling it – it's also about believing it, and when it comes to their ultimate and final selection of a home, discerning buyers know that their choice hinges on redefining luxury. It's why we redefine luxury and set a new bar for excellence through innovative practices and dynamic designs. Redefining luxury is MainVue's mission. You can count on this from us.

**MAINVUE HOMES WILL ALWAYS
BE AT THE VERY FOREFRONT OF
REDEFINING LUXURY.**





MAINVUE HOMES

*endless luxury
with no limits.*



MAINVUE HOMES

*striking looks with
spacious interiors.*







MAINVUE HOMES

*build on
something solid.*



THE MAINVUE DISTINCTION

the difference is everywhere.



MainVue Homes, part of the highly-regarded Henley Properties Group, distinguishes itself as a worldwide leader in new home design and construction. We take pride in our partnership with the Sumitomo Forestry Group, a corporation with a rich three-century history of its own. It's this cross-continental reach that allows MainVue to bring the best in international design and global buying power straight to its customers. It means you may select from the latest homes at the best value at prices that are as attractive as our luxury designs.



Experience this exclusive feel first-hand. Begin by immersing yourself in the size, the style and the grandeur of our homes. Start with a personal visit to MainVue's World of Model Homes, where distinct and impeccable walk-through models are open to you. To both feel it and believe it, explore any MainVue model and experience how they blend with, and are enhanced by, our outstanding surrounding neighborhoods and communities. Watch as our popularity grows, and brings new models to equally outstanding locations throughout Washington State's greater Puget Sound area.



When you visit a MainVue home, our respect for, and understanding of, the community are evident everywhere. For a fresh infusion of style, MainVue Homes introduces a wide variety of façade choices to compliment elegant streetscapes. On the inside, we continue defining luxury with our signature style and unparalleled attention to detail. Every area of each home - from designer kitchens to our exclusive outdoor rooms - has been carefully considered. To ensure the very latest in new home design, no space is taken for granted - and space is so prolific you might lose yourself in the luxury.



At MainVue Homes, we are committed to providing the highest level of personalized customer respect through our own dedicated customer service team. Our goal is to ensure you have complete comfort and satisfaction by keeping you regularly updated with the progress of your home's construction. We ensure ongoing support right up to the completion of your home - and then you will enjoy further reassurance because your home is backed by our 10-year structural warranty. MainVue is truly with you, every step of the way.



Peerless in its placements, and legendary in its lifestyles. Throughout the greater Seattle area, your new MainVue home is built on something solid and simply superior. Our range of popular community locations in Washington State provides customers with a world of lifestyle choices. Active, vibrant, engaging, connected and smart. With this phenomenal blend of community lifestyles throughout the Puget Sound region, you are bound to find your perfect place in a thoughtfully-designed setting.



MainVue Homes' comprehensive 10-year Home Builders Limited Warranty has always hit all the high points - and now it's even better. Our multi-level warranty is now backed by a partnership with Professional Warranty Service Corporation. With this partnership, MainVue homebuyers receive simple, worry-free resolutions for structural or construction issues that may arise.





MAINVUE HOMES

*unparalleled
attention to detail.*

THE DIFFERENCE IS EVERYWHERE

from reliability and history, to style and fresh approach.

LUXURY INCLUSIONS ARE OUR STANDARD

With the most sought-after luxury finishes included as standard in every home, the buying process is effortless and stress-free.

BEST COMMUNITIES IN THE BEST LOCATIONS

Top rated school districts, family friendly amenities, optimal locations. Now selling throughout King, Snohomish, Pierce and Kitsap Counties.

WHOLE HOME EFFICIENCY PROGRAM

From the air you breathe to the comfort you feel, our thoughtful energy efficient features, appliances, materials and finishes bring "green" to more than just your pocket.

A LONG HISTORY OF BUILDING EXPERIENCE

Trusted for over 42 years, with experience from Japan to Australia, Seattle and most recently Texas.

WORLD OF MODEL HOMES

Experience the latest in design, merchandising and lifestyle amenities. Explore two World of Model Homes, now on display in Auburn and Monroe.

INNOVATION AND CONTEMPORARY STYLE

Innovative floor plans with clean, contemporary designs lead to genuinely elevated lifestyles.

DYNAMIC FACADE OPTIONS

A full range of distinct and timeless facade options with varied choices of brick, stacked stone, stone block, tile or stucco (per plan).

PROFESSIONAL COLOR SCHEME PALETTES

Hand crafted by designers, our contemporary color schemes are perfectly balanced ensuring timeless and stress-free selections to complement every homeowner's personal style.

LUXURY MADE EASY

Skip spending hours in a design center and thousands on upgrades after contract. Decadent luxury inclusions that rival the most expensive finishes found in custom homes are included as standard with every MainVue home.

OVER \$24.9 MILLION IN WORLDWIDE DONATIONS

Our proven philanthropic commitment both globally and locally is the core of who we are.

DESIGNER FEATURES IN EVERY MAINVUE HOME

Every MainVue home comes flush with the best in designer features and amenities.

THE BEST IN CUSTOMER CARE

We are committed to providing the highest level of personalized customer care through our own dedicated service team.







MAINVUE HOMES

*at the forefront
of architecture.*



MAINVUE HOMES

*expect even more
with mainvue.*





OUR MAINVUE WAY

our pledge. our principles. our purpose.

Some call it our ethos. But really, it's less about us and more about you - the people we build for and the communities you live in.

You put your trust in MainVue Homes for the greatest investment you will ever make in life: your family and your home. That's why we want you to share what

drives us and what inspires us to earn and maintain this trust. It's our spirit, our philosophy and our attitude.

Giving, Growing and Re-Energizing. Each of these principles drive us - day-to-day and for the future - to be the best Washington neighbor and the best global steward that MainVue Homes can be.

FOR MORE ON ALL OF OUR PHILANTHROPIC EFFORTS, VISIT **MAINVUEHOMES.COM**





MAINVUE HOMES

*dedicated to people
and communities
across the globe.*

OUR MAINVUE WAY

A GIVING TRADITION

a good neighbor globally and locally.

STRONG CITIZENS

MainVue Homes, part of Henley Properties Group and partner of the Sumitomo Forestry Group, is proud to be part of a worldwide organization committed to supporting – and giving back to – our communities. It's who we are.

You can see our giving in major children's hospitals and foundations; neighborhood support programs and animal shelters; life-changing children's health and protection programs; and the many key environmental initiatives we have impacted around the globe.

This inspired us to donate all \$900,000 from the sale of an exquisite new home located on an estate-sized lot in one of our Washington State communities directly to life-saving research at the Research Institute at Seattle Children's Hospital. This gift is already hard at work, helping scientists and doctors search for cures, provide better care and create positive changes for children and families throughout the country and the world.

Since 1993, we have contributed more than \$24.9 million worldwide. In just the past few decades, Henley has built and

auctioned more than 67 homes – each to benefit children's hospitals.

To build upon Henley's foundation of philanthropy, and continue to support communities both locally and globally, MainVue Homes is proud to announce their second Seattle Children's Charity House that launched Fall 2017. MainVue Homes teamed up with Tehaleh by Newland Communities and the pair donated 100% of the purchase proceeds from the sale of a brand-new home on a stunning lot at Tehaleh, to Seattle Children's Research Institute.

With Henley Properties Group, MainVue Homes is also a strong supporter of Childwise – an organization fighting human trafficking/trade and child exploitation across Southeast Asia. Our donations fund orphanages and student sponsorships that truly improve the lives of children.

Our commitment also supports the Reach Foundation, which helps Australian teens overcome barriers to reach their full potential. And our contributions to breast cancer research target the psychological impact of the illness on both patients and their vital caregivers.

GOOD NEIGHBORS

Equally important, through our new connections in Seattle and Texas, MainVue and Henley are proud to be associated with other dedicated groups – the real hard-working people who share our vision.

At MainVue, giving time – tackling hands-on projects locally – is vital to us. It's why we enthusiastically embrace "MainVue Day" in both the Seattle and Dallas areas. This annual all-day volunteer campaign allows us to share our success with grass-roots programs, from the North Texas Food Bank and Frisco Family Center in Texas, to the Children's Therapy Center and Vision House in the Greater Seattle area.

Behind the scenes and out in front, MainVue believes giving is a way we can share our success globally – and in the local places where we live and work alongside our homebuyers.

a complete commitment to humanity across the world.



OUR MAINVUE WAY

RE-ENERGIZING AND GROWING

respectful to our environment.

GROWING

At MainVue and Henley, we know that building homes takes both vision - and retrospection.

We have learned this from our recent successes as well as the experiences drawn from a rich 320-year heritage - something our partners call the "Sumitomo Spirit." It has taught us that balance and harmony with the earth and its resources are more important now than ever before.

At its core, The Sumitomo Forestry Group reveres timber as a renewable, healthy, and environmentally-friendly natural resource. Since its founding the group is committed to practice business with a thoughtful balance of the environment and the economy we share - while contributing to a sustainable society for all.

This begins at its home in Japan, where Sumitomo Forestry promotes "Green Smart." This "Green Smart" housing development concept fuses Sumitomo's expertise in the "unique characteristics of wood" and "blessings of nature" and then binds this with its focus on reducing energy consumption through thermal insulation improvements and "smart energy" using equipment to generate and store energy. By boosting home energy efficiency in this way, the company seeks to reduce CO2 emissions.

The result contributes to regional revitalization by providing local employment opportunities as well as a stable source of income from the sale of timber.

It's a long-term commitment - and it's just one example of how Sumitomo values the importance of harnessing "the power of the forests" for a better future for all.

RE-ENERGIZING

Energy and efficiency. At MainVue, they are one in the same. Why?

Because it's important to you. In fact, when you buy a MainVue home, it features all our most responsible, reliable, cost-effective energy efficiency systems. And, oh yeah: it comes with all the finest comforts, too.

Think of that as a Win/Win/Win/Win.

**DISCOVER MAINVUES SIGNATURE
WHOLE HOME EFFICIENCY PROGRAM
ON THE NEXT PAGE.**



*the sumitomo spirit: harnessing
the power of the forest.*

WHOLE HOME EFFICIENCY PROGRAM

energy savings, quality and beauty.

Homebuyers deserve it. MainVue assures it.

Mirroring the innovative style that has long defined its local and worldwide commitment to energy efficiency, MainVue Homes takes this responsibility to a whole new level.

With a series of healthy, cost-effective and whole home comfort energy features, we want our MainVue homebuyers to understand exactly what our

pledge means in the greater Puget Sound area. Our commitment to this gives us pride and our homebuyers confidence.

How do we do it? MainVue Homes gets down to business. Our focus: a “whole home” approach designed to balance savings, comfort and improved air quality – all without sacrificing exceptional design. For MainVue, true energy efficiency is about achieving the realities of efficient, functional, affordable and exceptionally beautiful living.

MainVue is tireless in our thorough inspections and rigorous testing. Taken separately and collectively, we want every one of our homes in Washington State to meet or exceed MainVue’s high quality and efficiency standards.

ASK US FOR A DETAILED GUIDE TO MAINVUES WHOLE HOME EFFICIENCY PROGRAM.

EXPLORING THE MAINVUE WHOLE HOME EFFICIENCY PROGRAM

✓ **SAVE THOUSANDS
A YEAR IN ENERGY
EFFICIENCY COSTS**

✓ **ENERGY SAVINGS
WITHOUT SACRIFICING
STUNNING DESIGN**

✓ **QUALITY ASSURANCE
THROUGH THIRD PARTY
INSPECTIONS AND TESTING**



BREATHE DEEP HEALTHY INDOOR AIR

By connecting technologically advanced systems of air filtration and fresh air exchange, MainVue homeowners can rest easy and breathe with a sense of confidence in knowing your home offers healthy oxygen.



SAVVY SAVING ENERGY EFFICIENCY

MainVue homebuyers work smarter – and want smarter value for their energy investments. The reward? Monthly savings on their energy bills – from heating, lighting and beyond.

For beautiful hands-on appliances and out-of-sight savings, MainVue showcases brilliant energy bill-trimmers.



WATERING WISELY WATER CONSERVATION

Others claim to help homebuyers conserve water, but MainVue's conscientious multi-part plan goes deeper into the internal workings of each home. Low flow faucets, toilets, shower heads and new technology with Rinnai Tankless water heaters cut down on water bills and make your home more environmentally friendly.



RESPECTING RESOURCES ENVIRONMENTAL PRESERVATION

From our core materials to the practices that harvest and manufacture them, a home built by MainVue is backed by a stewardship partnership with the venerable Sumitomo Forestry Group. As part of this partnership, MainVue supports the honorable forestry practices and the sustainable forest management philosophy that Sumitomo prioritized for more than 320 years.



FINISH WISELY QUALITY INSPECTIONS

From sensible starting points to astute finishes, all MainVue Homes undergo exceptionally thorough energy and quality inspections at important stages of the building process. What this means to homebuyers: their investment and their home are completed with the highest quality in energy-efficiency standards backed by the professionals.



*don't just imagine luxury,
experience it in person at
the world of model homes.
visit us today to take a personal tour.*



THE WORLD OF MODEL HOMES

now in 2 locations in the puget sound area.

MainVue Homes invites you to visualize homes so innovative, so well designed and so beautiful that they will set the standard in architecture and interior design around the world for decades to come.

More importantly, they will exceed your very own discerning standards for luxury and value.

So why merely imagine the finest of homes when you can discover them in person? With MainVue's World of Model Homes, dreams become reality in communities rich with heritage and flush with amenities that beckon you to explore the fullest range of tour-ready models available in one single MainVue location.

Each model home features a full range of luxury inclusions that come standard in every MainVue home.

The enchantment begins with MainVue's signature styles found throughout the varied grand display homes here. By the time you see the latest colors, touch the enviable luxury inclusions and immerse yourself in the innovative designs in these model homes, you will feel as if you belong here.

Power up sophisticated kitchen appliances and plan your next holiday. Stroll out to the Signature Outdoor Room where the fresh air will help you savor your morning coffee. Stride up

the grand staircase or through the main floor to find your sanctuary in your posh master suite.

These MainVue homes - with their unparalleled spectrum of choices - are available in a wide selection of highly sought-after neighborhoods, all for you.

VISIT THE MAINVUE WORLD OF MODEL HOMES

GREENVALE IN AUBURN
30313 111th Court SE, Auburn 98092

EAGLEMONT IN MONROE
196th Avenue Southeast, Monroe 98272



GREENVALE WORLD OF MODEL HOMES
8 MODELS ON DISPLAY



EAGLEMONT WORLD OF MODEL HOMES
6 MODELS ON DISPLAY





MAINVUE HOMES

*love where you
live.*

MAINVUE COMMUNITIES

the best communities, in the best locations.

MainVue Homes communities offer you the best in new homes and neighborhood design with a quality lifestyle to match.

With this phenomenal blend of community lifestyles across the greater Seattle area, you are bound to find your perfect place in a thoughtfully-designed setting.

Each exclusive community offers something unique and special. Find MainVue homes in settings that promote healthy,

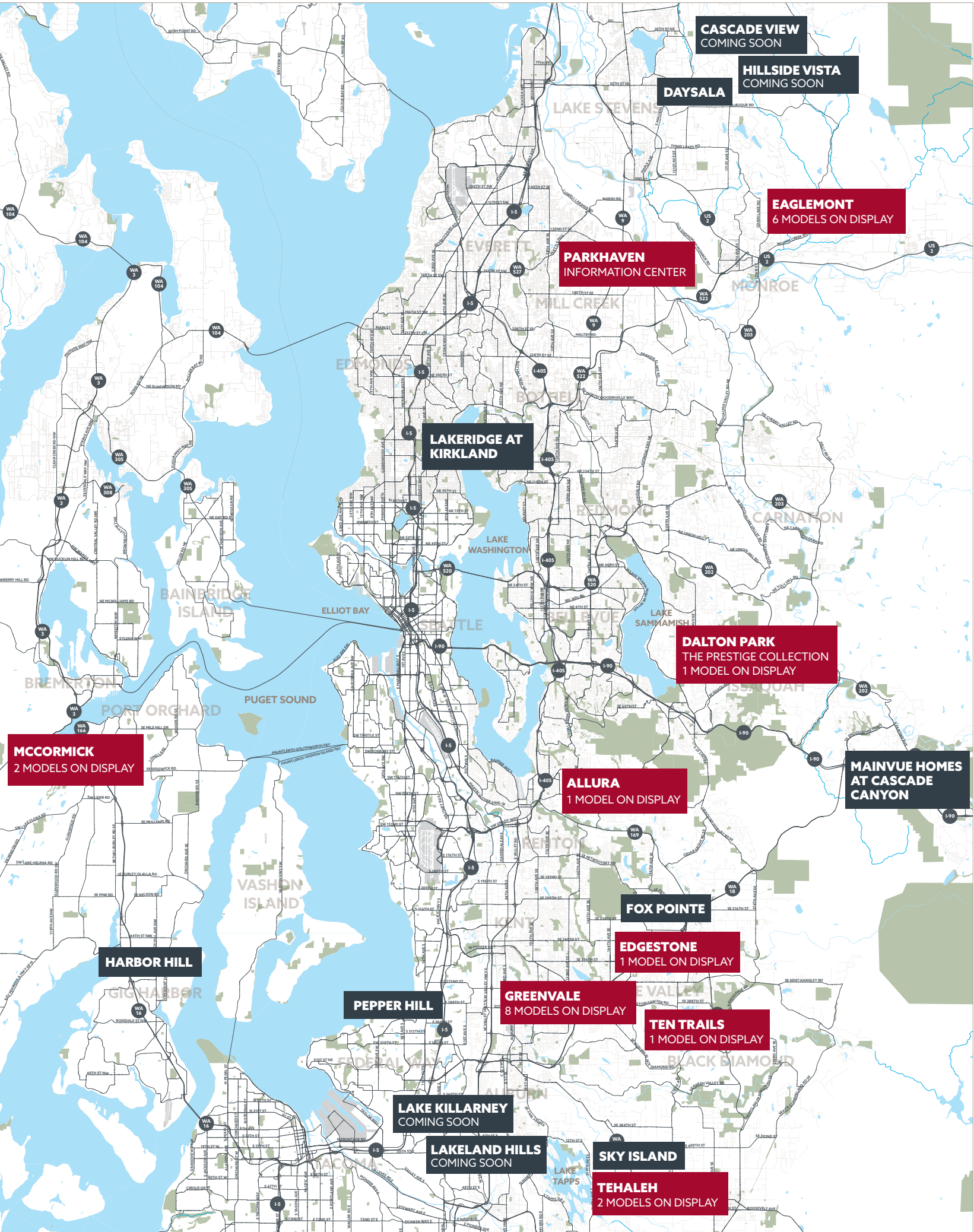
active and engagingly social lifestyles through neighborhoods and national parks. Discover us near convenient connections to school, work, shopping, healthcare and leisure. For a look at the lifestyle and community features and benefits that make up each one of our exclusive MainVue Homes communities, turn to the next pages.

To discover additional details about each community and homes that are selling

right now as well as those coming soon, please speak with a MainVue Homes Consultant.

FOR A LIST OF OUR LATEST COMMUNITIES VISIT
MAINVUEHOMES.COM





CASCADE VIEW
COMING SOON

HILLSIDE VISTA
COMING SOON

DAYSALA

EAGLEMONT
6 MODELS ON DISPLAY

PARKHAVEN
INFORMATION CENTER

LAKERIDGE AT KIRKLAND

DALTON PARK
THE PRESTIGE COLLECTION
1 MODEL ON DISPLAY

MCCORMICK
2 MODELS ON DISPLAY

ALLURA
1 MODEL ON DISPLAY

MAINVUE HOMES
AT CASCADE
CANYON

HARBOR HILL

FOX POINTE

EDGESTONE
1 MODEL ON DISPLAY

PEPPER HILL

GREENVALE
8 MODELS ON DISPLAY

TEN TRAILS
1 MODEL ON DISPLAY

LAKE KILLARNEY
COMING SOON

LAKELAND HILLS
COMING SOON

SKY ISLAND

TEHALEH
2 MODELS ON DISPLAY

ASTORIA - A FACADE



FAVORED FACADES; COUNTLESS CHOICES

make a statement with your designer facade.

The interior of your home says so many things about you, but it's the exterior of your home that makes an always important first statement. That's why MainVue introduces a wide range of distinctive and modern façade choices, each with variations that assure your own unique look. When enhanced by our selection of accents and finishes, your compelling façade begins showcasing a personal preference even before you cross the threshold.

With this full range of select MainVue designer façades to consider, it's easy

to begin conveying that important first impression. We know that accent variety - stone, stucco, brick and tile - makes a difference in the way you want to present your personal place on a streetscape, as well. From MainVue's designer color schemes and grand entries, to over-sized windows and premier lighting fixtures, your preference means everything to us. And at MainVue Homes, you enjoy the confidence of knowing our professional team is ready to share our full spectrum of façades from which to choose - all so you are ensured

of selecting a new-home exterior that pleases your eye, reflects your lifestyle and compliments your budget.

Ask us how our selections can add character and texture to your home façade - a canvas that will become an ultimate work of art.

**OUR FACADE COLLECTION IS
ALWAYS GROWING!**

**ASK US FOR DETAILED
DRAWINGS OF ALL OUR
DESIGNER FACADES.**



GLENDAL - D FACADE



EMERSON - U FACADE



NEWPORT - W FACADE

DESIGNER FACADES

which facade suits your lifestyle?

CALISTO - E FACADE



SOLANA- D FACADE



SENTOSA - S FACADE



HUDSON - K FACADE



DUXTON - N FACADE



HAMPTON - F FACADE



CALISTO- T FACADE



FAIRVIEW - H FACADE



MARCELLO - B FACADE



*sharp, straight,
modern lines.*
*the facade options don't stop
here, ask us for a complete
list.*



LUXURY INCLUSIONS

exceptionally exclusive.

With MainVue Homes, the difference is everywhere - but to start redefining luxury, it often begins with a breath-taking sense of satisfaction in buying a new home that is already flush with a litany of luxury inclusions. Much of the credit goes to our international team of professional designers, who have selected dazzling hand-crafted finishes, fixtures and features that complement the nuances of each space in every home. These luxury inclusions are intrinsic to MainVue homes, and almost impossible to find elsewhere.

Make a designer splash with your standalone master suite soaking tub. Master any menu atop your super-sized kitchen

island. With MainVue Homes, there's always something more. What's more with MainVue is the value in every home without an exorbitant price tag. It's about having countless luxury amenities included as standard features. It's the form and function of Grohe designer faucets. It's the sleek hardware and soft-close concealed door hinges on stunning cabinets. It's the oh-so-heavenly spray of an adaptable hand-held showerhead in the master bath after a rough day. Clearly, it's more than innovative home plans and artfully crafted façades.

It's about finishing touches that give you a simple thrill...over and over again.

Why wait? From kitchens to baths, and outdoor living features to intimate indoor spaces, explore the next few pages to sample the possibilities of what your future can be - or what it will be with MainVue Homes.

Come discover for yourself how we are redefining luxury.

**LUXURY INCLUSIONS ARE
OUR STANDARD.
ASK US FOR A COMPLETE LIST**





LUXURY INCLUSIONS ARE OUR STANDARD

GOURMET KITCHENS

From energy efficient appliances to chrome fixtures to designer surfaces, find out what comes standard in your MainVue gourmet Kitchen.





MAINVUE KITCHENS

*the heart of
every home.*

*more kitchen inclusions
on next page.*

*Inclusions may vary per plan. Refrigerator is not included.



*Inclusions may vary per plan.



MAINVUE KITCHENS

*kitchens fit for
a chef.*

*Inclusions may vary per plan. Refrigerator is not included.



LUXURY INCLUSIONS ARE OUR STANDARD

ENSUITES AND BATHS

Stylish stand-alone tubs, designer tiles, crisp white vessel style sinks and dual master vanities are just a few of the features included as standard in a MainVue Ensuite and bath.



*Inclusions may vary per plan.



MAINVUE ENSUITES & BATHS

*loaded with
luxury.*

*more ensuite and bath
inclusions on next page.*

*Inclusions may vary per plan.



*Inclusions may vary per plan.



MAINVUE ENSUITES & BATHS

*opulent bath
features.*

*Inclusions may vary per plan.



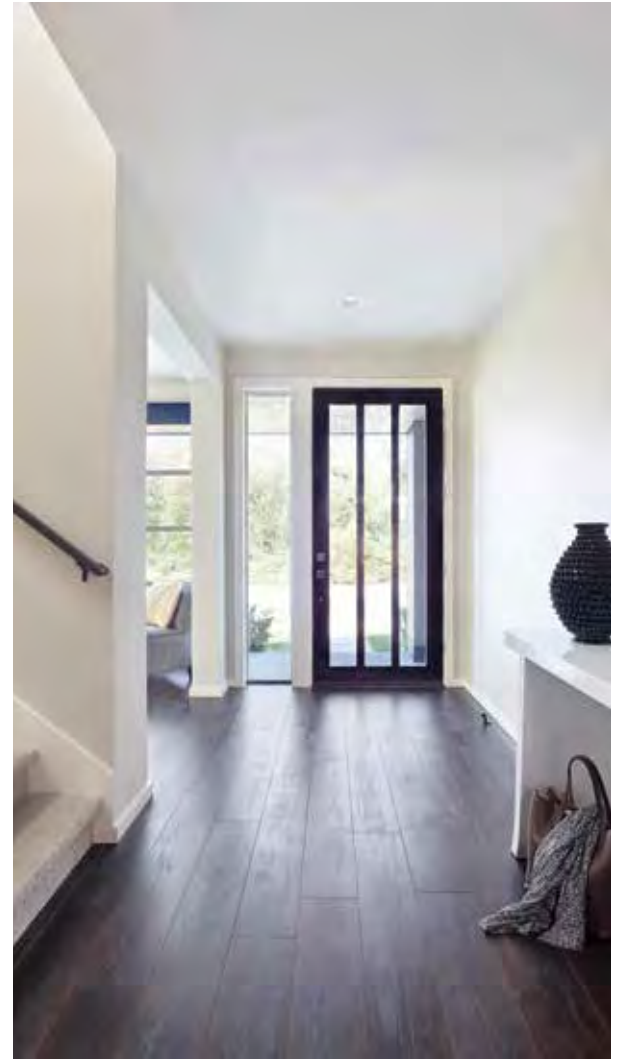
LUXURY INCLUSIONS ARE OUR STANDARD

DESIGNER FEATURES

Discover MainVue's signature luxury inclusions found throughout each MainVue Home.



*Inclusions may vary per plan. Outdoor Room fireplace not included.



MAINVUE INCLUSIONS

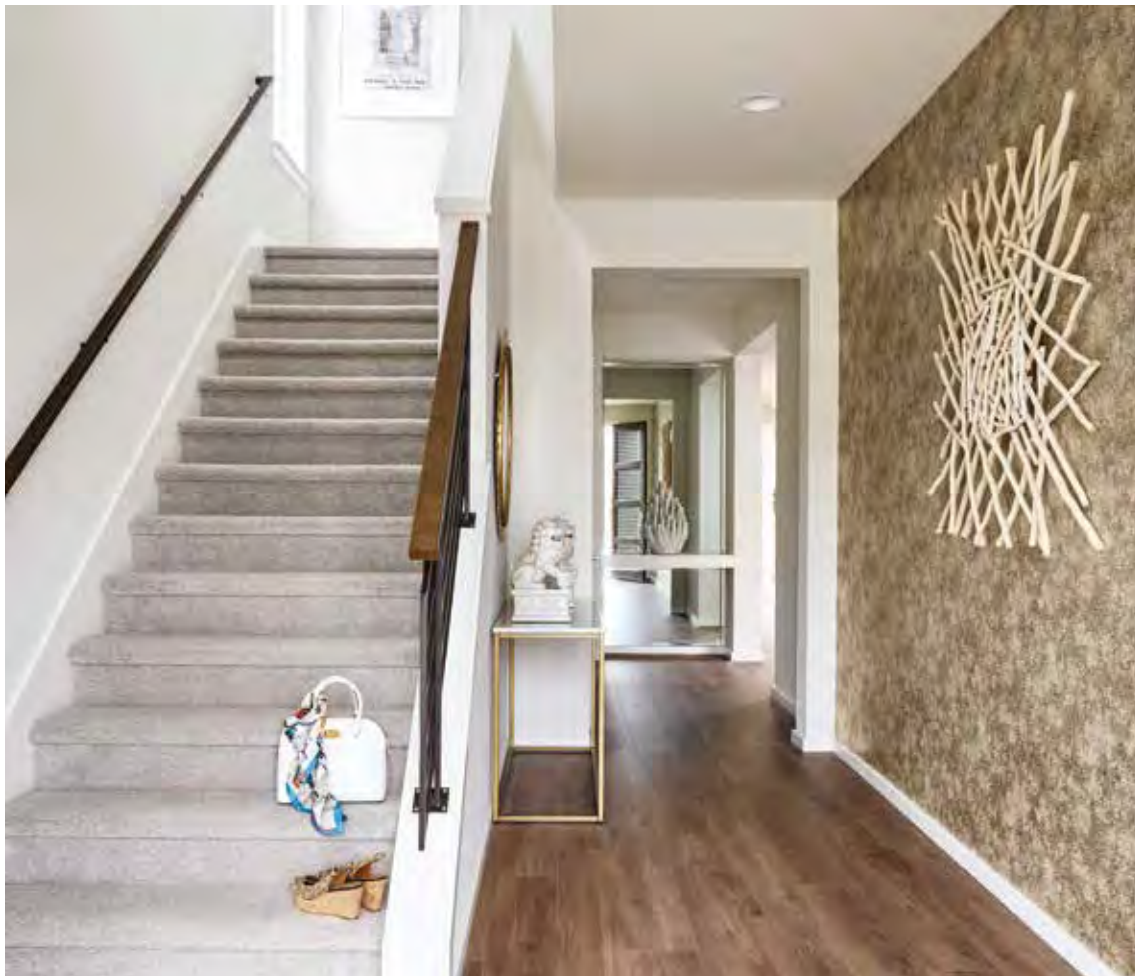
*no detail left
untouched.*

*more inclusions on
next page.*

*Inclusions may vary per plan.



**Inclusions may vary per plan.*



MAINVUE INCLUSIONS

*luxury inclusions
are our standard.*

*Inclusions may vary per plan.



LUXURY INCLUSIONS ARE OUR STANDARD

EXQUISITE EXTERIORS

Luxury inclusions start before you even enter a MainVue home. Full fencing, unique facades and Mainvues Signature Outdoor Room are just a few exterior features included.



*Outdoor room fireplace and fire pit not included.



MAINVUE EXTERIOR FEATURES

*unique, designer
exterior features.*

*Outdoor room fireplace and fire pit not included.

DESIGNER COLOR SCHEMES

professional palette of charismatic color

Riveting color palettes - each professionally selected by a team of MainVue designers - blend, layer and pop throughout the exquisite range of MainVue Homes choices.

Like galleries of art in their own right, these six color families are equal parts rich and romantic. MainVue's design specialists have created menus of complementary colors that capture looks that appear effortless and sophisticated both at the same time.

Embrace nuances with dynamic colors and subtle undertones straight from the best of Pacific Northwest nature. Immerse yourself in these modern clusters of chroma:

PEBBLE

As fresh as a river's edge mountain hike, the light grayish timber-look flooring carves a path toward mid-tone carpet. Acrylic gray lower kitchen and island cabinets shine up against warm brown timber-look upper cabinets. Unclouded light gray dances across the countertops and kitchen backsplash. In the master bath, warmth of purifying dark gray tile plays off light semi-polished accent tiles like a walk after a winter rain.

KOKO

Mine modern shades of darks and lights into comfortable warm mid-tone brown

timber-look flooring that coalesces with darker brown carpet. Evocative browns continue to emit warmth off the kitchen backsplash while shiny white acrylic upper kitchen cabinets and clean white countertops tango with deeper brown timber-look lower cabinets. Relax in the master bath where semi-polished light tile dances across the floor and into the shower - all with a sultry charcoal tile for spectacular accent.

OCEAN

Like shades of the Washington coast on a perfect summer day, discover the natural beauty of juxtaposed warm and cool tones. Go barefoot across dark chocolate timber-look flooring as it washes up against a light carpet. Modern timber-look bluish-gray/brown hybrid hues wash across kitchen cabinets and up against shiny, white kitchen islands. Mid-tone gray shades create a backsplash for dappled pebble-gray countertops. For the master bath, nature-kissed light brown semi-polished tile swells into the shower and flooring with intermittent accents of shiny charcoal tile accent.

LEAF

A forest of shades and textures with warm, welcoming and equally bright blends. Gaze across mid-tone brown timber-look flooring as it wends into

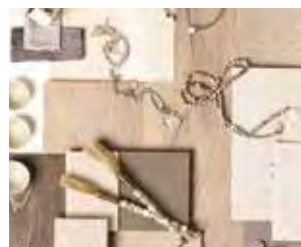
light-shade carpet. Light toasted ginger countertops and white back-splash blend gracefully with dark timber-look kitchen cabinets to complete the sweep. Equally soothing warm brown tiles are underscored by the bright sheen of white accent tiles in the master bath.

AMARETTI

Elevate your Northwest spirit with all that is light and airy. Guests will gush about your light brown timber-look flooring and its also light carpet. Shiny white acrylic cabinets dazzle in the kitchen, accentuating chic-and-light warm countertops and backsplash. This resplendent light continues in the timber-look cabinets throughout the rest of the home. Even the master bath, with its shiny bright white accents, captures summer-like light in its shower and floor tile.

FOG

Melt into the mystique of a cool gray bank of carpet and timber-look flooring as it rolls in like a morning whisper. In the kitchen, soothing chocolate tones bounce against translucent, misty gray shades lacquering the gourmet island and nearby cabinets. Unblemished egg-shell iridescence buoys kitchen counter finishes, juxtaposed against a dark steel grey backsplash. In the master bath, semi-polished pearl-like tiles add their own accents of clarity to Pacific surf-gray flooring and shower.



FIND YOUR COLOR SCHEME

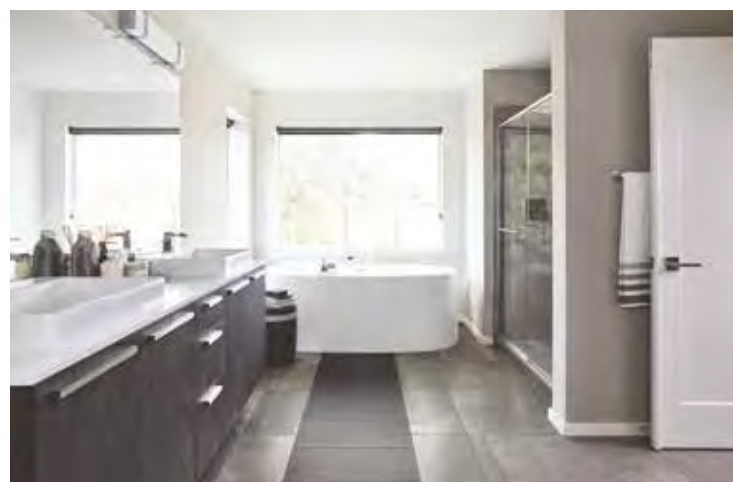
choose from designer schemes.

more designer color schemes on next page...

PEBBLE



KOKO



MAINVUE DESIGNER COLOR SCHEMES
HANDCRAFTED BY A TEAM OF INTERNATIONAL DESIGNERS.

LEAF



OCEAN

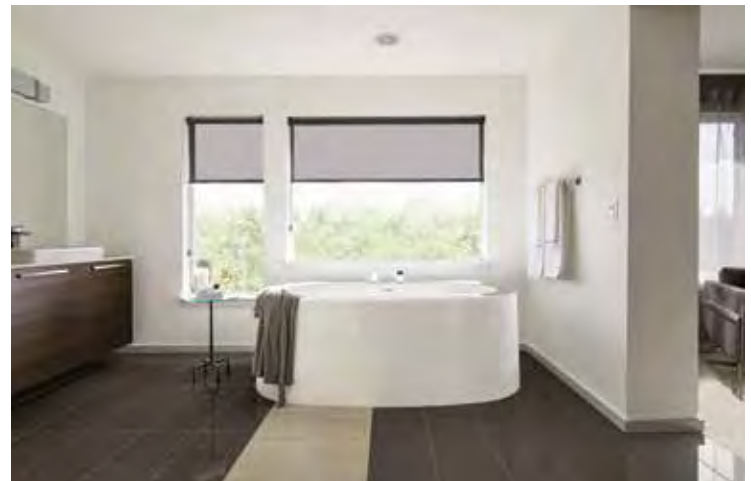


MAINVUE DESIGNER COLOR SCHEMES
WHICH COLOR SCHEME WOULD YOU SELECT?

AMARETTI



FOG







MAINVUE HOMES

*the difference is
everywhere.*



MULTI-GENERATION LIVING OPTIONS

homes designed to be accommodating and flexible.

perfect pairings under one roof.

A single roof overhead does not define a family. And a single family under one roof doesn't always define a household.

Few understand this better than MainVue Homes – and you. That's why we're here to meet your dynamic family-and-friends lifestyle with 4 flexible levels of intuitive plan designs ready for your unique arrangements.

Need to include more than one generation in a place your loved ones can call their own? Let us help. Want to comfortably host frequent holiday house guests? Perhaps there is a nanny or live-in child care in your future? We have the spaces for you.

Because MainVue Homes respects that no two buyers are alike, we're maximizing ways to customize some of our most

popular designs and introduce a slate of inspiring new plans, too. Take a look at our:

- Contemporary guest bedrooms with private access to a bathroom
- Modern guest suites with completely private bathrooms
- Exceptional homes with two full master suites with their own separate luxurious bath amenities
- Spacious independent living quarters with Duet Living Suites, featuring private separate-key exterior access, its own entertainment/leisure room and a kitchenette – ideal for transitional phases in an adult's life

Beyond accommodating, these plans augment the best in shared living space. MainVue's dynamic open-concept room flow continue to dazzle.

It now means you can connect over late-night conversations in your expansive great room and fresh-air Signature Outdoor Room before overnight guests retire to the privacy of their bedroom or suite. It proves you can double the joy of preparing holiday celebrations in your sophisticated kitchen, with plenty of pantry space, while family or friends bridge between their own master suite and the dining area. And it assures that separation and independence are always an option.

The result? Unparalleled compatibility.

With MainVue Homes, pairing privacy and togetherness under one roof never looked so good.



MAINVUE MULTI-GENERATION
HOME DESIGNS

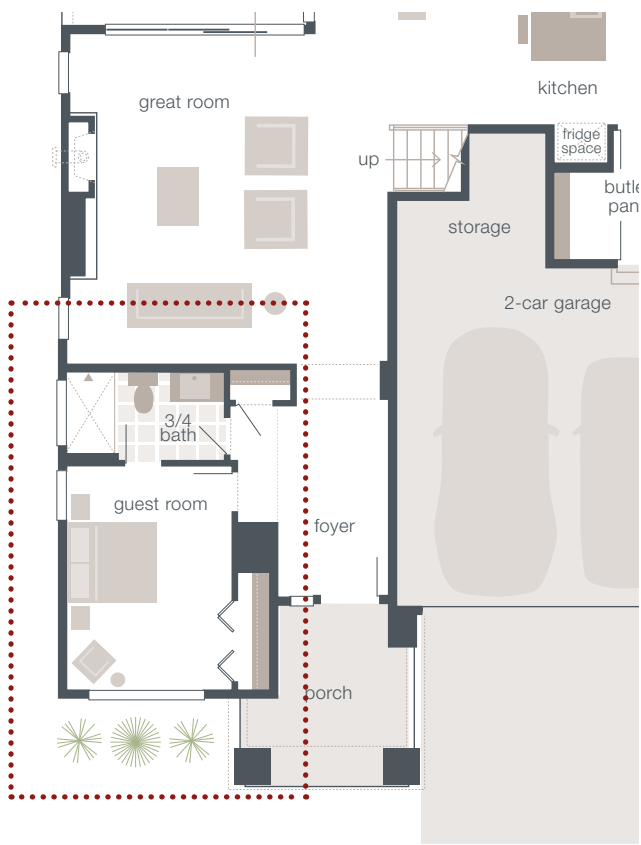
*accommodating, flexible,
intuitive, connected and
inspiring.*

multi-gen options on next page.

MULTI-GENERATION LIVING OPTIONS

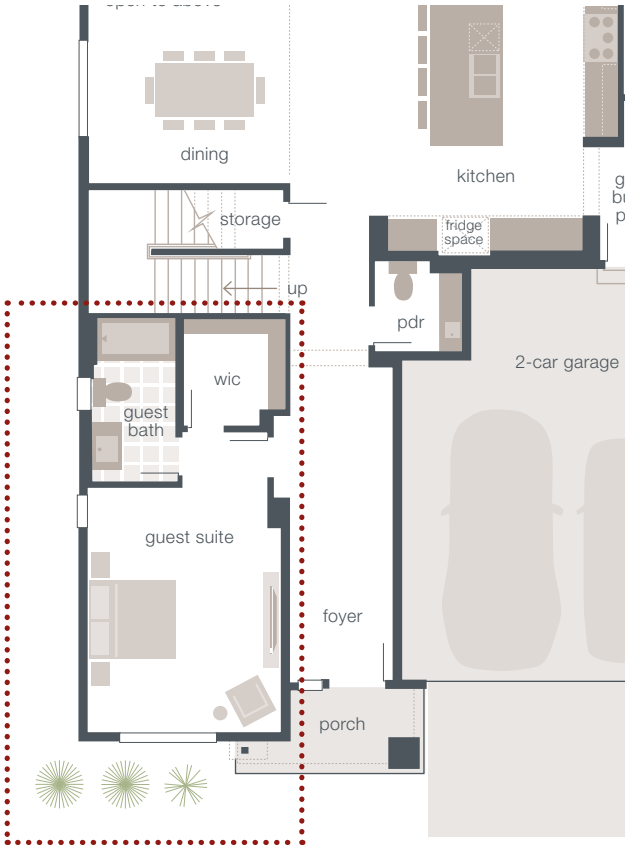
GUEST ROOMS

Homes designed with a Guest Room and private access to a 3/4 Bathroom.



GUEST SUITES

Homes designed with a Guest Suite including a private bathroom and even more spaces and optional features on some plans.



MULTI-GENERATION LIVING OPTIONS

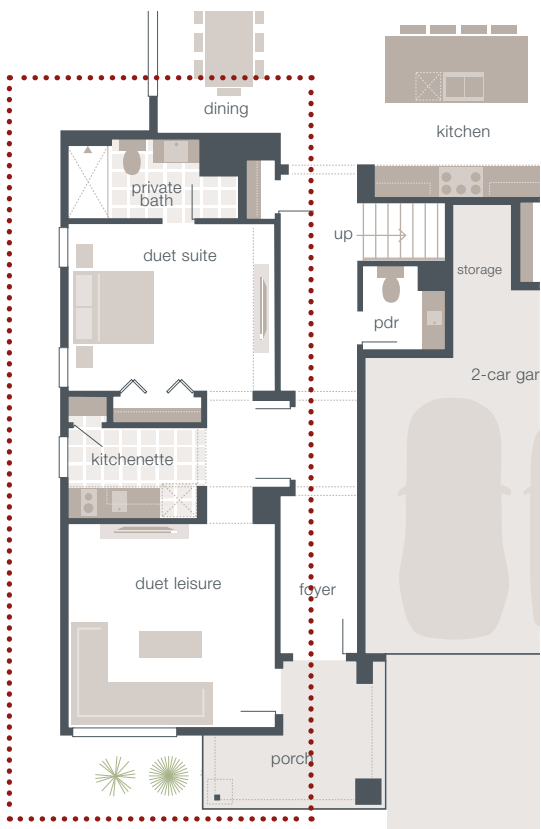
DUAL MASTER SUITES

Homes designed with two full Master Bedrooms, each complete with a full luxurious Master Bathroom.



DUET LIVING SUITES

Homes designed with a full secondary living quarters complete with Bedroom, 3/4 Bathroom, Leisure Room, Kitchenette and private exterior access.



*home design flexibility
when it counts most.
ask us for more information about
our multi-gen home designs.*

MAINVUE COLLECTION

a world of home designs.

From each angle and every perspective, MainVue is raising the bar on home designs and living.

Discover how rewarding your lifestyle can truly be with MainVue Homes – collections of voluminous new home designs showcasing an extensive variety of living choices and stylish façades. Each is flush with luxury inclusions, all at no extra cost. It's just one of many ways we're redefining luxury.

Select from our modern façades series, each defined by its clean lines and varied attractive finish details: stone, tile, brick and stucco.

Subtle and dramatic luxury inclusions enhance space inside, as well. MainVue

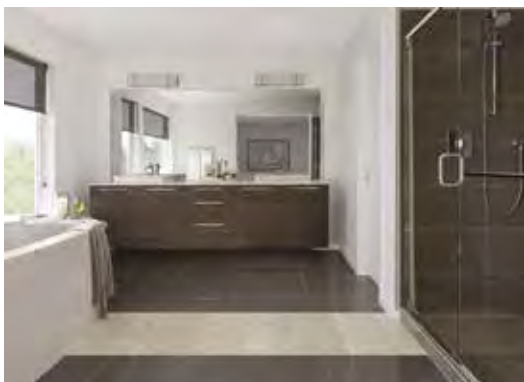
pumps up the volume in enviable open-flow great room designs that integrate with even more space in expansive kitchens, formal or informal dining rooms. Luxury and flexibility continue streaming in leisure rooms and – as always – MainVues' Signature Outdoor Rooms.

Our outstanding selection of exceptional homes ranges from 1972 to 4241 square feet. Just as important: MainVue's selections can be found in more than a dozen communities through the Puget Sound area, providing even more choice to homebuyers.

Please take a moment to browse the customized details throughout our vast collections to help select a home

that should belong to your lifestyle and needs. For more information about any of our homes or communities featured in this catalogue, please speak with a MainVue New Home Consultant.

**SPEAK WITH A CONSULTANT
ABOUT ALL PLANS AND PLAN
FEATURES.
1.800.764.8171**



FIND THE PERFECT HOME DESIGN TO SUIT YOUR LIFESTYLE

HOUSE NAME	SQUARE FEET	OUTDOOR ROOM SF	ON DISPLAY	TOTAL BEDROOMS	MASTER UP/DOWN	BATHS	GARAGE	DEN	LEISURE ROOM	MULTI-PURPOSE ROOM	BUTLER'S PANTRY	GRAND BUTLER'S PANTRY	GARAGE STORAGE	PAGE
MONET	1972	88	EAG	3	DOWN	1.75	2	•		•	•			71-74
WINCHESTER V3	2372	135		3	UP	2.5	2		•				•	75-78
BERKELEY	2675	158		4	UP	2.5	2	•	•		•		•	79-82
AMBIA V3	2686	141		4	UP	2.5	2		•	•				83-86
ELLINGTON	2986	149		3	DOWN	2.5	2		•	•	•			87-90
SENTOSA	3073	189	GV / EAG	4	UP	2.5	2		•	•				93-96
HAVANNA	3130	140		4	UP	2.5	2	•	•	•	•		•	97-100
LYRA	3151	115		4	UP	2.5	2		•	•		•		101-104
AMBIA V2	3154	147		4	UP	2.5	2		•	•		•		105-108
HUDSON	3262	180	GV	4	UP	2.5	2	•	•		•		•	109-112
VANTAGE	3394	183		4	UP	2.5	3	•	•	•		•		115-118
MARCELLO	3499	144	GV / EAG	4	UP	2.5	2	•	•	•		•		119-122
NEWPORT	3514	165	GV / EAG / TEH	4	UP	2.5	2	•	•	•	•			123-126
GLENDALE	3565	205		4	DOWN	2.5	3	•	•			•		127-130
BANKSIA	3824	185		4	UP	3.5	3	•	•	•		•	•	131-134
LAWSON	3889	237		4	UP	4.5	2	•	•	•		•		137-140
ASTORIA	4026	197	EAG/EDG	4	UP	3.5	2	•	•	•		•		141-144
AVOCA	4078	211	TEH/MCK	4	UP	3.5	3	•	•	•		•		145-148
DUXTON	4102	206	GV/EAG	4	UP	4.5	2	•	•	•		•		149-152
DEVLON	4126	227		4	UP	4.5	2	•	•	•		•	•	153-156
ELDESSA	4241	233	ALL / TT	4	UP	4.5	2	•	•	•		•	•	157-160

Model references: GV = GREENVALE EAG = EAGLEMONT TEH = TEHALEH MCK = MCCORMICK EDG = EDGESTONE ALL = ALLURA TT = TEN TRAILS

* Total square footages include outdoor room.

*All photos, illustrations, and plans represented in this catalogue are for illustration purposes and should be used as a guide only. Plans, square footage and house availability may vary by community and are subject to change.

THESE ARE JUST A SAMPLE OF AVAILABLE HOME DESIGN VARIATIONS.
Speak with a MainVue Sales Consultant for additional plans and alternative home designs.

MONET

HOME DESIGN

1,972 Square Feet, 3 Bedrooms, 1.75 Baths, 2 Car Garage, Signature Outdoor Room, Den, Multi-Purpose Room, Butler's Pantry

ON DISPLAY AT EAGLEMONT

*your pursuit of
new ambition.*



With change comes privilege –including the luxury to resize into a sophisticated rambler with all the trimmings. By distilling exquisite entertainment zones, relaxing bedrooms and savvy storage niches found in a myriad of popular two-level MainVue plans, The Monet rewards forward-thinking homebuyers with a single-level design that matches excellence, room-by-room.

As a whole, the Monet home design incorporates a smart, functional layout without compromise. Hallways with gallery-like walls begin at the entry, where the fashionable foyer feels like an elongated room all its own. Deeper in this hallway, branch right into a tucked away den, large enough to originate a new side business or active retirement plans (or be modified into a fourth bedroom, if preferred.) Break left to enter a semi-enclosed, modern multi-purpose room that could double as a library or entertainment space.

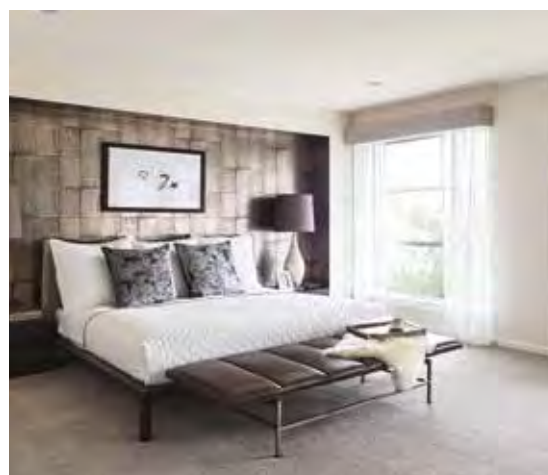
Bedrooms two and three, meanwhile, have assured privacy down a dedicated hallway separate from the foyer, creating an ideal setting for guests during extended holiday stays or young adults transitioning to their next home.

Privacy is also preserved in the rear corner-set master suite, where luxury radiates from the Quartz counters capping the dual-sink bath vanities and tile surrounding the walk-in shower and

separate drop-in soaking tub, and a spacious walk-in master dressing room.

Far more panoramic: the open-flow great room, which pushes its boundaries seamlessly into the chic dining room and gourmet kitchen. This triad frames the Signature Outdoor Room for all-season entertaining. Serve menus large and small at the kitchen's supersized, Quartz-crowned kitchen island, surrounded by rich European style frameless cabinets and Stainless Steel appliances. Practical kitchen prep and storage continues with generous butler's pantry with an L-shaped return providing an abundance of out-of-sight shelving space.

With the Monet home design, it's possible to follow your new set of ambitions in a single-level plan designed for your present and your future.



*posh style with
luxury innovation.
floor plan on next page.*

MONET

HOME DESIGN



*indulge in pure
perfection.*

*just some of the top features
found in this home design.*

- Stylish and spacious rambler home design
- Multi-Purpose Room on main floor with plush, stain-resistant carpeting
- Tucked away Den with option to enclose
- European style cabinetry with sleek satin nickel pulls and tabs
- Spacious Butler's Pantry
- Brilliant and energy efficient lighting throughout
- Signature Outdoor Room with direct access to Great Room via a wall-height sliding glass door
- Luxurious Master Suite with drop-in soaking tub and dual vanities

1,972 SQUARE FEET | 3  | 1.75  | 2 



*home design
details.*

SQUARE FOOTAGE:

Main Floor	1884
Outdoor Room	88
Total Square Feet	1972
Garage	361

SIGNATURE SPACES:

Signature Outdoor Room
Den
Multi-Purpose Room
Butler's Pantry

AVAILABLE OPTIONS:

Den ILO Bedroom 3
Bedroom 4 ILO Den

*The finished square footage areas provided are calculated based on ANSI Z765-2013 standards as commissioned by National Association of Home Builders (NAHB). Finished square footage calculations were made based on plan dimensions only and may vary from the finished square footage of the house as built. Finished square footages vary based on elevation styles and plan options. Total square footage used in marketing includes the outdoor room.

WINCHESTER V3

HOME DESIGN

2,372 Square Feet, 3 Bedrooms, 2.5 Baths, 2 Car Garage,
Signature Outdoor Room, Leisure Room, Garage Storage

*exceeding all
expectations.*



Imaginations are unleashed with the potential for active living in this popular home design.

The spacious atmosphere of this home begins at the entry, where a soaring ceiling leads to a hallway that expands to the grand volume of the great room or the

option to travel up to the second floor.

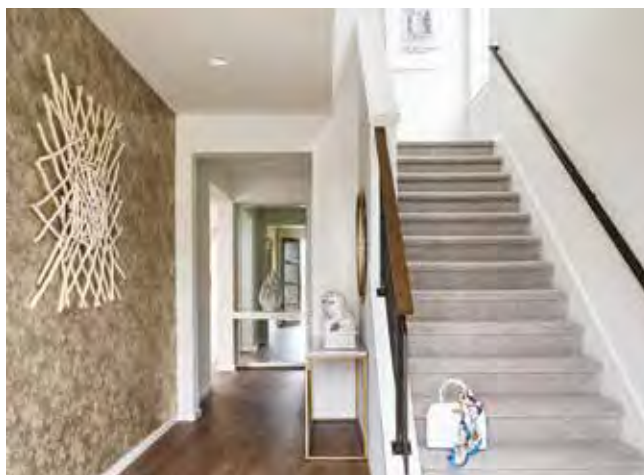
The great room living space is equal parts stylish and smart as the design flows to connect the contemporary dining room and nearby gourmet kitchen. Visually, the design transitions through not one, but two, floor-to-ceiling glass doors which connect to the homes' Signature Outdoor Room. From quiet breakfasts to late night celebrations, this all-season space is ready for anything. Its thoughtful placement is also an attractive feature from the equally entertaining amenities of the nearby kitchen, where Euro-style cabinetry complement the super-sized chef's chic and practical grand kitchen island.

With a strategic approach to how cooks work best, the convenient pantry is perfectly located for storing favorite menu items and the countertop appliances needed to prepare them.

Opportunities for even greater living latitude are found at the peak of the staircase, where open leisure room suit virtually any purpose – from children's slumber parties to a fun hobby space. Engulfing the entire rear of the home is the master suite – a generous sleeping quarter that showcases a private master bath with dual-sink vanities and access to a full walk-in dressing room.

Additional bedrooms on the upper level enjoy the accessibility of a well-appointed bathroom with dual-sink vanities. All are just steps away from a full utility room for the nearby convenience of a fresh laundry.

The Winchester design will both amaze and excite you, exceeding all of your expectations.



*a leader in sheer
elegance.
floor plan on next page.*

WINCHESTER V3

HOME DESIGN



*the luxury is
everywhere.*

*just some of the top features
found in this home design.*

- Wide foyer entry through custom wood and glass door
- Master Suite with designer free-standing tub and 72" high semi-frameless shower enclosure with chrome hardware
- Signature Outdoor Room with wall-height sliding glass doors
- Perfectly placed Leisure Room on the upper floor for an extra entertainment space
- Supersized, entertainment-ready Kitchen island with sleek Quartz countertops
- Chic array of custom pendant lighting

2,372 SQUARE FEET

3 

2.5 

2 



home design
details.

SQUARE FOOTAGE:

Main Floor	964
Upper Floor	1273
Outdoor Room	135
Total Square Feet	2372
Garage	446

SIGNATURE SPACES:

- Signature Outdoor Room
- Leisure Room
- Garage Storage

AVAILABLE OPTIONS:

- Bedroom 4 ILO Leisure Room

*The finished square footage areas provided are calculated based on ANSI Z765-2013 standards as commissioned by National Association of Home Builders (NAHB). Finished square footage calculations were made based on plan dimensions only and may vary from the finished square footage of the house as built. Finished square footages vary based on elevation styles and plan options. Total square footage used in marketing includes the outdoor room.

BERKELEY

HOME DESIGN

2,675 Square Feet, 4 Bedrooms, 2.5 Baths, 2 Car Garage, Signature Outdoor Room,
Butler's Pantry, Den, Leisure Room, Garage Storage

*multiply luxury
by creativity.*



On paper, blueprints for the Berkeley are calculatingly enticing. In person, this four-bedroom design is even more than you imagined. Multiply layers of luxury with flashes of contemporary creativity to watch math in motion. Picture a relaxed Friday night in the rear corner signature outdoor room. While weekend playlists pulse from the open-flow great

room, magnificent sliding glass walls add even greater visual volume to an open-flow styling extending to the sophisticated dining room.

Come morning, lounge as long as you like over coffee at the gourmet kitchen's supersized quartz-crowned island – a refined space enhancing rich cabinetry and stainless steel appliances. When night-life calls and extra party-prep space is needed, expand to the convenient walk-in butler's pantry where natural light filters through a distinctive window splashback.

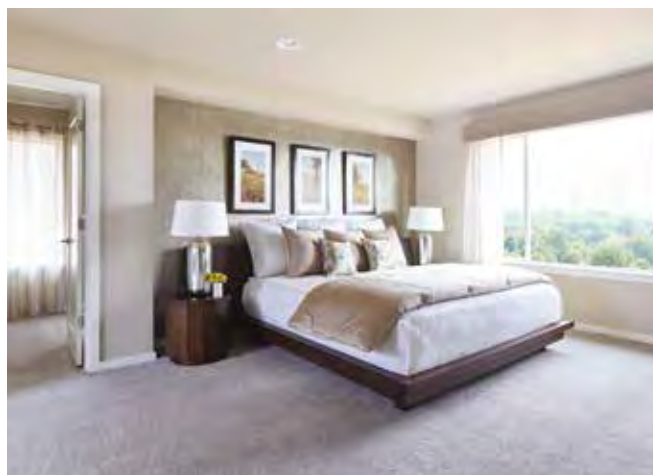
Wide-plank, timber-look flooring extends beyond the kitchen to a hallway leading to the homeowners' two-car garage and bonus storage.

Guests, meanwhile, follow the hallway toward a chic foyer with its grand wood- and glass-panel entry door. At the foyer, leave flow to the front-corner den open – or add double doors to

enhance privacy; it's one of many MainVue options available in The Berkeley to maximize personalization.

At the grand staircase peak, consider enclosing the leisure room or modifying it into a fifth bedroom. No matter your MainVue customizations, master suite respite is assured on the Berkeley's upper level. Break out bubble bath for soaking in your drop-in tub or catch a refreshing rinse in the separate semi-frameless, walk-in shower. Lighting dazzles atop the quartz-counter dual vanity nearby. It's completely separate from the spacious dressing room across the hall.

Touches like these further prove the Berkeley flawless equation: style goes on exponentially.



*contemporary
in style.*
floor plan on next page.

BERKELEY

HOME DESIGN



*distinctively
intuitive.*

*just some of the top features
found in this home design.*

- Forward Den for a separated and private work setting
- Supersized, entertainment-ready Kitchen island with sleek Quartz countertops
- Spacious Butler's Pantry with unique window splashback for added natural light
- Master Suite with drop-in soaking tub and 72" high semi-frameless shower enclosure with chrome hardware
- Perfectly placed Leisure Room on the upper floor for an extra entertainment space
- Generous amount of storage space found in the 2-Car Garage

2,675 SQUARE FEET

4 

2.5 

2 



home design
details.

SQUARE FOOTAGE:

Main Floor	1131
Upper Floor	1386
Outdoor Room	158
Total Square Feet	2675
Garage	507

SIGNATURE SPACES:

- Signature Outdoor Room
- Butler's Pantry
- Den
- Leisure Room
- Garage Storage

AVAILABLE OPTIONS:

- Bedroom 5 ILO Leisure Room

*The finished square footage areas provided are calculated based on ANSI Z765-2013 standards as commissioned by National Association of Home Builders (NAHB). Finished square footage calculations were made based on plan dimensions only and may vary from the finished square footage of the house as built. Finished square footages vary based on elevation styles and plan options. Total square footage used in marketing includes the outdoor room.

AMBIA V3

HOME DESIGN

2,686 Square Feet, 4 Bedrooms, 2.5 Baths, 2 Car Garage, Signature Outdoor Room,
Multi-Purpose Room, Leisure Room

*exclusive point-
of-view.*



In a twist promising oh-so sophisticated open spaces intentionally framed for maximum privacy, a cleverly crafted foyer is just the start to the MainVue ingenuity found in this Ambia V3 home design.

Beyond the modern glass-accented front door, the elegant entry and especially pronounced deep hallway assure zero line-of-sight into shared living spaces. Its design creates a definitive welcome for formal guests while simultaneously

concealing more informal homeowner slippers-and-robos living reserved at the rear of the main level.

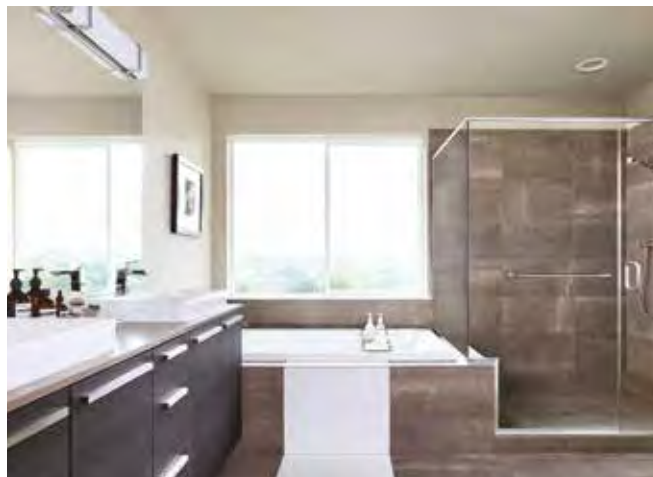
Via a thoughtfully engineered twist-and-turn hallway pattern, the V3's multi-purpose room is ultimately revealed – but still semi-sequestered – from the far-more-open great room and its adjacent entertainment-ready kitchen and dining room. Become a quick-dinner hero with deliveries straight from your discreet two-car garage access and prepared with a gleaming array of Stainless Steel Electrolux appliances.

For midnight popcorn by the stunning fireplace or cold craft brews at the supersized Quartz-capped island, ingredients in the kitchen's corner-set pantry are ready, secluded behind a frosted glass door. Tying all of this multi-faceted living together: MainVue's all-season Signature Outdoor Room, a visual showstopper through floor-to-ceiling sliding glass walls, revealing boundless views of sunset skies.

Even closer to evening stars, the upper level master suite fills the entire rear of Ambia V3. A luxurious tile-accent soaking tub awaits your bubbles preference, mirrors above the dual-sink vanity reflect your best day-and-night look, and the walk-in closet seems to naturally create wardrobe space. Three secondary bedrooms, meanwhile, are arranged near the front of this level. They share a half-bathroom conveniently placed across from the laundry room.

If you spin the main level's semi-enclosed multi-purpose room into a friendly feet-off-the furniture feel, the upstairs leisure room at the peak of the staircase invites you to make up rules as you go. Day-to-day towers of toys, folded laundry or homework assignments may build up – with no guilt – and still leave space for video games or yoga mats.

Private. Open. Casual. Semi-formal. The beauty of the Ambia V3 belongs to you and your exclusive point-of-view.



*exceeding all
expectations.
floor plan on next page.*

AMBIA V3

HOME DESIGN



*inspiration from
top to bottom.*

*just some of the top features
found in this home design.*

- Blockbuster Multi-Purpose Room on main floor with plush, stain-resistant carpet
- Handsome quality wide-plank timber-look flooring in main floor living areas
- Supersized, entertainment-ready Kitchen island with sleek Quartz countertops
- Corner situated Signature Outdoor Room with wall-height sliding glass doors
- Master Suite featuring luxurious drop-in soaking tub engulfed in designer tile
- Perfectly placed Leisure Room on upper floor for an extra entertainment space

2,686 SQUARE FEET

4 

2.5 

2 



home design
details.

SQUARE FOOTAGE:

Main Floor	1063
Upper Floor	1482
Outdoor Room	141
Total Square Feet	2686
Garage	443

SIGNATURE SPACES:

- Signature Outdoor Room
- Multi-Purpose Room
- Leisure Room

*The finished square footage areas provided are calculated based on ANSI Z765-2013 standards as commissioned by National Association of Home Builders (NAHB). Finished square footage calculations were made based on plan dimensions only and may vary from the finished square footage of the house as built. Finished square footages vary based on elevation styles and plan options. Total square footage used in marketing includes the outdoor room.

ELLINGTON

HOME DESIGN

2,986 Square Feet, 3 Bedrooms, 2.5 Baths, 2 Car Garage, Signature Outdoor Room, Multi-Purpose Room, Butler's Pantry, Leisure Room, Main Floor Master Bedroom

*in sync with a
flawless fit.*



Without a doubt, your household is one-of-a-kind. And when a unique buyer's new home needs require a flawless fit, MainVue delivers. Proof positive: The Ellington's exceptional versatility – a customizable plan flush with almost unparalleled choices in bedroom suite arrangements.

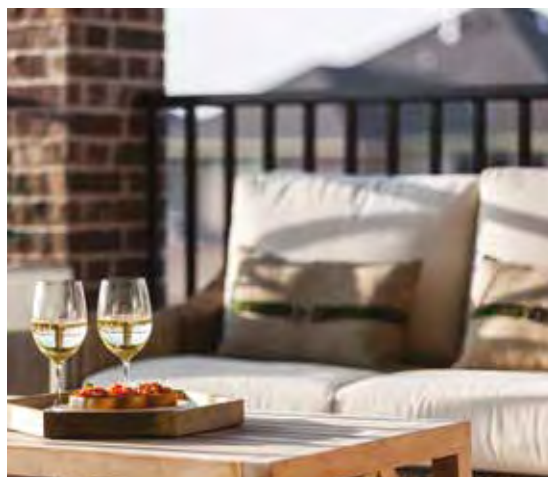
Choose from the classic: an intuitive design that presents a main-level master – a sweeping suite with a tile-surround drop-in soaking tub, semi-frameless glass shower and luxurious dual-sink vanity leading to a generous dressing room closet. With this original, two secondary upper-level bedrooms host their own walk-in closets and shared bath around the corner from the leisure room's engaging vibe. For a recent grad, nanny or live-in grandparent, consider letting MainVue personalize the upper level with a second master suite complete with its' own private guest bath perfect for hosting short- or long-term guests.

The main living space is energized by the hum from the gourmet kitchen: a modern fusion of sophisticated dining and great rooms, spotlighting a warm fireplace, quartz-crowned supersized service island, and a corner-set Signature Outdoor Room – expansive

space as brilliant as the natural light that streams through its floor-to-ceiling sliding doors. Off the kitchen, a walk-through pantry with owner access to the two-bay garage sweetens the deal with savvy storage and discreet meal-prep counters.

Far more striking: the modern façade and columned porch leading to the on-trend glass-panel entry door. Inside, volume amps up in the statement-making foyer and the adjacent entertainment-ready multi-purpose room. Make it a play zone, game room, viewing studio, library or semi-formal reception space: the potential is undeniable.

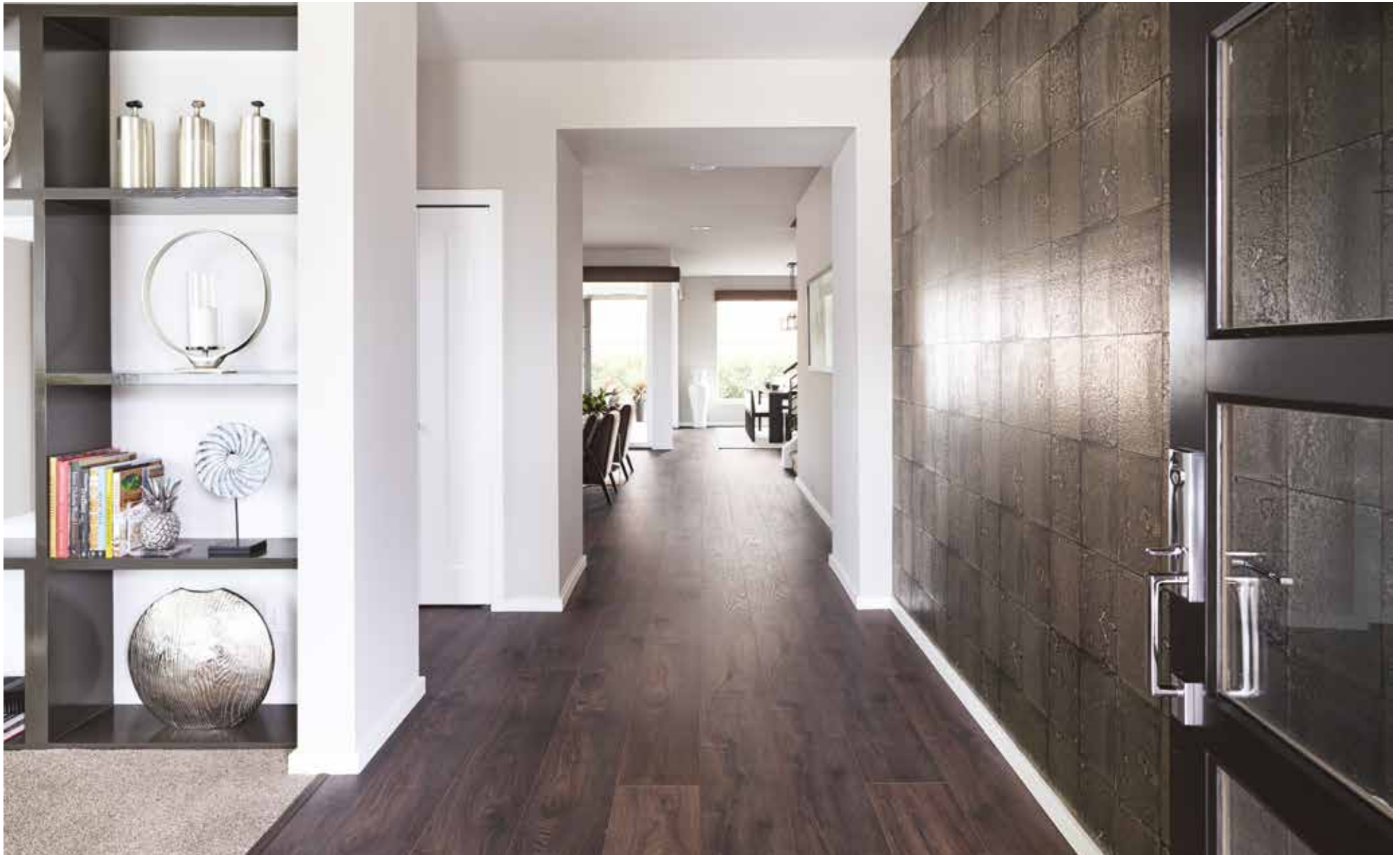
With every last inch, for each of its one-of-a-kind buyers, The Ellington offers versatility in a class by itself.



*graceful design,
inside and out.
floor plan on next page.*

ELLINGTON

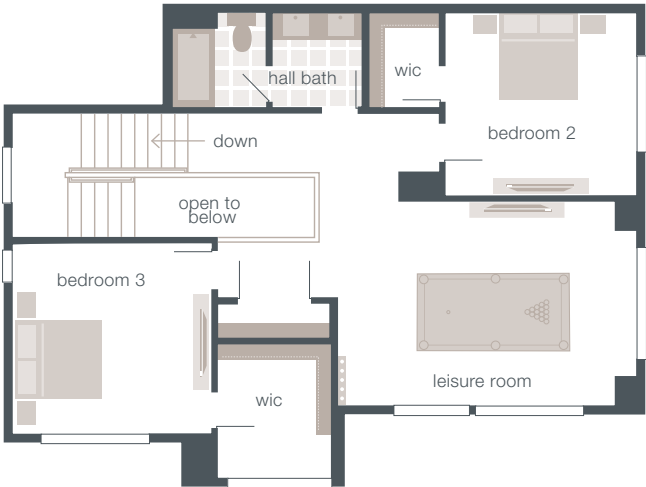
HOME DESIGN



*top-of-the-line
home design.*

*just some of the top features
found in this home design.*

- Main floor Master Suite with luxurious Bathroom and expansive walk-in Dressing Room
- Corner situated Signature Outdoor Room with wall-height sliding glass doors
- Blockbuster Multi-Purpose Room on main floor with plush, stain-resistant carpet
- Luxurious Powder Room with designer pendant lighting
- Butler's Pantry with convenient access to Garage
- Perfectly placed Leisure Room on upper floor for an extra entertainment space



home design
details.

SQUARE FOOTAGE:

Main Floor	1815
Upper Floor	1022
Outdoor Room	149
Total Square Feet	2986
Garage	431

SIGNATURE SPACES:

- Signature Outdoor Room
- Multi-Purpose Room
- Butler's Pantry
- Leisure Room

AVAILABLE OPTIONS:

- Bedroom 2 Bathroom ILO
- walk-in closet

*The finished square footage areas provided are calculated based on ANSI Z765-2013 standards as commissioned by National Association of Home Builders (NAHB). Finished square footage calculations were made based on plan dimensions only and may vary from the finished square footage of the house as built. Finished square footages vary based on elevation styles and plan options. Total square footage used in marketing includes the outdoor room.





MAINVUE HOMES DESIGN

*perfectly placed
entertainment
spaces.*

SENTOSA

HOME DESIGN

3,073 Square Feet, 4 Bedrooms, 2.5 Baths, 2 Car Garage, Signature Outdoor Room,
Multi-Purpose Room, Leisure Room

ON DISPLAY AT EAGLEMONT AND GREENVALE

*scaled to complete
perfection.*



Life is complex. Fortunately, the Sentosa is the ideal, calming counter-balance. Visually striking in its modern presentation and contemporary in its comfort, the ambiance of this design is thoughtfully attuned to perfect proportions.

A definitive sense of arrival begins in the

sophisticated pendant-lit foyer, past the chic custom entry door framed by glass panels. Open only to the staircase, the foyer uses carefully cut angles and corners to visually protect the deeper part of the home's line-of-sight, enhancing privacy. Artful, timber-look flooring spans throughout the main living area. Also found on the main floor, the multi-purpose room, rich in flexibility with plush carpeting and semi-enclosed for intimacy.

A more sprawling great room, meanwhile, emerges from its doorway. The plan's L-shape connects to the adjacent dining room and savvy kitchen, with full tile backsplash, soft-close European cabinets adorned with brushed nickel pulls and tabs, and discreet walk-in butler's pantry.

With a gorgeous flair, the grand kitchen island easily switches personality from hosting cocktail parties for

adults to crayon sessions for kids. Two separate sliding glass walls open to the Signature Outdoor Room, offering quiet intimacy for morning coffee or a boisterous hot-spot for game-day celebrations.

Upstairs, the spacious leisure room doubles as the conduit to three secondary bedrooms – and the hallway to the home's master suite. Beyond the master's sleeping zone, the plan features a bath suite with posh twin vessel-sink basins, Euro-style amenities and Grohe designer faucets. Two separate dressing rooms – both large enough for extensive wardrobes – are on opposite sides of the bedroom.

When MainVue's focus is on maximizing flexibility, it's clear to see that the space the Sentosa provides can do more than you would ever expect.



*the luxury is
everywhere.
floor plan on next page.*

SENTOSA

HOME DESIGN



*filled with style
and grace.*

*just some of the top features
found in this home design.*

- Corner situated Signature Outdoor Room with direct access to Dining and Great Room via wall-height sliding glass doors
- Blockbuster Multi-Purpose Room on main level
- Gorgeous energy-saving Kitchen appliances
- Striking Master Bedroom with plush carpet and dual dressing rooms
- Leisure Room at top of stairs for an open and extra entertainment space
- Custom front entry door with frosted glass inserts
- Personal walk-in closets in two secondary bedrooms
- European style cabinetry with sleek satin nickel pulls and tabs

3,073 SQUARE FEET | 4  | 2.5  | 2 



home design
details.

SQUARE FOOTAGE:

Main Floor	1239
Upper Floor	1645
Outdoor Room	189
Total Square Feet	3073
Garage	387

SIGNATURE SPACES:

Signature Outdoor Room
Multi-Purpose Room
Leisure Room

AVAILABLE OPTIONS:

Guest Room ILO Multi-Purpose Room
¾ Bathroom in lieu of Powder Room
Bedroom 5 ILO Leisure Room

*The finished square footage areas provided are calculated based on ANSI Z765-2013 standards as commissioned by National Association of Home Builders (NAHB). Finished square footage calculations were made based on plan dimensions only and may vary from the finished square footage of the house as built. Finished square footages vary based on elevation styles and plan options. Total square footage used in marketing includes the outdoor room.

HAVANNA

HOME DESIGN

3,130 Square Feet, 4 Bedrooms, 2.5 Baths, 2 Car Garage, Signature Outdoor Room, Den, Multi-Purpose Room, Butler's Pantry, Leisure Room, Garage Storage

live in the moment.



Throughout the Havanna, it's clear: this design's framework mirrors your frame-of-mind. Make a big splash or play it easy-going. Any way you live in it, it's ready for your mood of the moment.

Throw some sizzle and spice to become a grilling gourmand for weekend party

guests - or snuggle up under moonlight music on a chaise in the Signature Outdoor Room at the rear of the main level. Through two sets of sliding window walls connecting this corner space to a sophisticated great room and nearby dining room, a seamless flow expands into an elegant kitchen empowered by stainless appliances and Quartz supersized island. A discreet walk-through butler's pantry - with stunning window splashback, rich cabinets and counter space designed for de-cluttering - bridges the kitchen with owners access to the two-vehicle garage boasting bonus storage.

From the dynamic columned entry porch, guests enter the Havanna via its warm foyer hallway.

While business guests retreat into the corner den's polished privacy, teens can power up digital games or an exciting movie night in the multi-

purpose room. Prefer to personalize the multi-purpose room into a main-level bedroom? Do it. This plan is drenched in options for almost all areas of the home design.

When young children need big spaces scaled to them, three upstairs bedrooms are designed around a centralized leisure room. Across the entire rear of the upper level, the master suite reinforces why you're purchasing a MainVue home to begin with: two dressing rooms for separate wardrobes; a decadent free-standing designer tub for soaking up the weekend; stylish double-sink settings at just-for-you vanity; and exquisite detailing around the semi-frameless walk-in shower.

In the Havanna, there's not a day that goes by when living in the moment isn't framed in luxury.



*encapsulating the
ultimate in luxury
living.*

floor plan on next page.

HAVANNA

HOME DESIGN



*even more
exclusive.*

*just some of the top features
found in this home design.*

- Forward Den for a separated and private work setting
- Blockbuster Multi-Purpose Room on main level
- Butler's Pantry with unique window splashback and convenient access to Garage
- Master Suite with dual Dressing Rooms and designer free-standing tub
- Corner situated Signature Outdoor Room with direct access to Dining and Great Room via wall-height sliding glass doors
- Perfectly placed Leisure Room on upper floor for an extra entertainment space
- Brilliant and energy efficient lighting throughout



home design
details.

SQUARE FOOTAGE:

Main Floor	1350
Upper Floor	1640
Outdoor Room	140
Total Square Feet	3130
Garage	455

SIGNATURE SPACES:

Signature Outdoor Room
Den
Multi-Purpose Room
Butler's Pantry
Leisure Room
Garage Storage

AVAILABLE OPTIONS:

Guest Room ILO Multi-Purpose Room
¾ Bathroom ILO Powder Room
Grand Butler's Pantry ILO Butler's Pantry
Mud Room ILO Butler's Pantry
Bedroom 5 ILO Leisure Room

*The finished square footage areas provided are calculated based on ANSI Z765-2013 standards as commissioned by National Association of Home Builders (NAHB). Finished square footage calculations were made based on plan dimensions only and may vary from the finished square footage of the house as built. Finished square footages vary based on elevation styles and plan options. Total square footage used in marketing includes the outdoor room.

LYRA

HOME DESIGN

3,151 Square Feet, 4 Bedrooms, 2.5 Baths, 2 Car Garage, Signature Outdoor Room,
Multi-Purpose Room, Grand Butler's Pantry, Leisure Room

*lyrical
living.*



Energized with brilliant practicality and super-charged by convenient comforts, each facet crafted into the Lyra home design reflects the homeowner you were meant to be.

Find your modern edge at the frosted glass-panel entry door leading to the

warm, welcoming foyer. Show off your competitive streak during games night in the luxurious multi-purpose room facing the gourmet kitchen's supersized grand kitchen island. Reveal your inner-entertainer during weekend parties while prepping appetizers in the grand butler's pantry with unique window splashback (with convenient access to a two-car garage and bonus pantry) and seamlessly serving guests in the corner-set Signature Outdoor Room.

Luxury inclusions – including a super-sized kitchen island, quartz counter-tops, European cabinetry, and stylish iron cage style dining room pendant lighting – highlight your sophisticated side.

Organization comes naturally with the efficient laundry room and linen closet focused near the three secondary bedrooms upstairs. Toys, games,

crafts, homework and hobbies almost store themselves near the upstairs nexus: a leisure room spacious enough for a gaming table and comfy enough for bare feet or slippers.

Relax more than you ever imagined while dreaming in your master bedroom and ensuite, soaking in the luxury of a free standing designer soaking tub or basking in the steam of the semi-frameless tile-enhanced shower with chrome finish hardware. This complete suite is reserved at the rear of the home for maximum privacy.

The Lyra home design is the true definition of a lyrical living experience.



*endless features
and innovation.
floor plan on next page.*

LYRA

HOME DESIGN



*pure luxury with
a serious edge.*

*just some of the top features
found in this home design.*

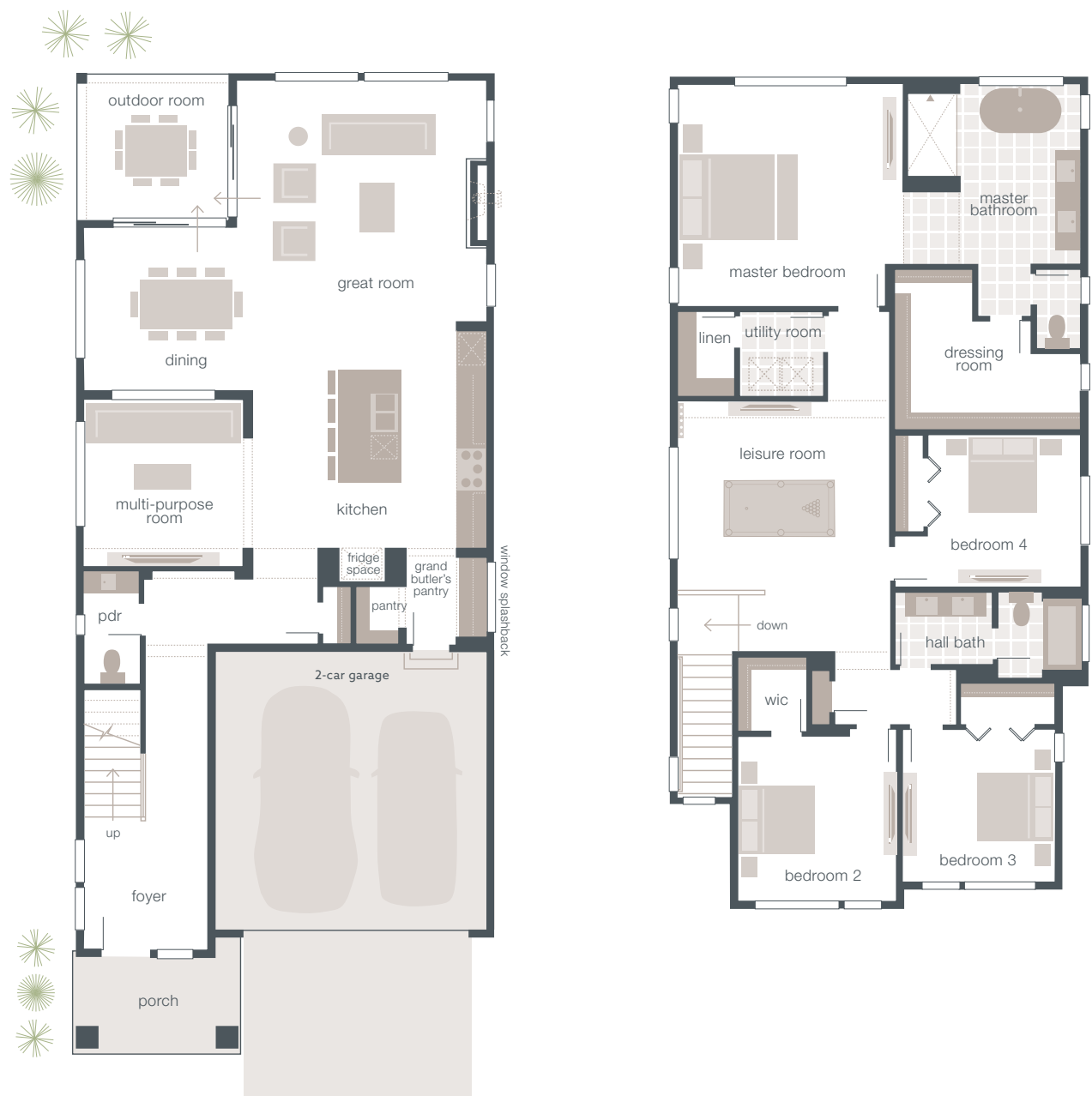
- Custom front entry door with frosted glass inserts
- Main floor Multi-Purpose Room with plush, stain-resistant carpeting
- Generous Grand Butler's Pantry with additional walk-in pantry for added storage space
- Master Suite with luxurious designer free-standing tub
- Dramatic 35" fireplace in Great Room with 6" metal surround in brushed Stainless Steel
- Signature Outdoor Room with wall-height sliding glass doors

3,151 SQUARE FEET

4 

2.5 

2 



home design
details.

SQUARE FOOTAGE:	
Main Floor	1335
Upper Floor	1701
Outdoor Room	115
Total Square Feet	3151
Garage	407

SIGNATURE SPACES:	AVAILABLE OPTIONS:
Signature Outdoor Room	Bedroom 5 ILO Leisure Room
Multi-Purpose Room	Mud Room with Pantry ILO Grand
Grand Butler's Pantry	Butler's Pantry
Leisure Room	

*The finished square footage areas provided are calculated based on ANSI Z765-2013 standards as commissioned by National Association of Home Builders (NAHB). Finished square footage calculations were made based on plan dimensions only and may vary from the finished square footage of the house as built. Finished square footages vary based on elevation styles and plan options. Total square footage used in marketing includes the outdoor room.

AMBIA V2

HOME DESIGN

3,154 Square Feet, 4 Bedrooms, 2.5 Baths, 2 Car Garage, Signature Outdoor Room,
Grand Butler's Pantry, Multi-Purpose Room, Leisure Room

*designed to
delight.*



Long on style and deep in quality, this cleverly crafted home plan brings a blend of open rooms and clever spaces to optimize a delightful lifestyle balance.

The home journey begins just past the front door, with a fashionable foyer assuring protective separation between

the entry, stylish staircase, and primary living areas at the rear of the designs. The private main level hallway shifts direction before emerging at the threshold between a semi-separate multi-purpose room and discreet access to the two-vehicle garage.

Just steps beyond: far more flowing space, marrying the side-by-side great room with its engaging kitchen. When expanded to include the adjacent and contemporary dining room and the enticing corner Signature Outdoor Room, this open space creates the perfect, blended partnership. A supersized kitchen island, topped with stunning Quartz, seamlessly bridges all spaces here. For fast-tracking food favorites, and keeping countertop appliances close, but discreetly tucked away, there's a pantry just steps away with a unique window splashback for extra natural lighting.

Up the staircase, meanwhile, familiar lines and angles arrive in the versatile leisure room and guide homeowners toward three secondary bedrooms and this level's show-case space: the master suite.

This design provides the ultimate privacy for the master bedroom. Behind its own entry door, the suite takes up the entire width of the level on the back side of the home. Dual his-and-hers dressing rooms, offer full walk-in wardrobe space, one is off the bedroom, the other off the master bath. Indulge in a luxuriously large soaking tub engulfed in designer tile, a separate shower with tile accents and chrome showerset, and twin-basin vanity with stylish vessel style sinks.

With a wide range of open living spaces, this home is truly designed to delight.



style that is truly unmatched.

floor plan on next page.

AMBIA V2

HOME DESIGN



*the essence of
perfection.*

*just some of the top features
found in this home design.*

- Spacious Grand Butler's Pantry with unique window splashback for added light and accent
- Blockbuster Multi-Purpose Room on main floor with plush, stain-resistant carpet
- Handsome quality wide-plank timber-look flooring in main floor living areas
- Supersized, entertainment-ready Kitchen island with sleek Quartz countertops
- Corner situated Signature Outdoor Room with wall-height sliding glass doors
- Master Suite featuring dual Dressing Rooms and luxurious drop-in soaking tub engulfed in designer tile
- Perfectly placed Leisure Room on upper floor for an extra entertainment space

3,154 SQUARE FEET

4

2.5

2



home design
details.

SQUARE FOOTAGE:	
Main Floor	1295
Upper Floor	1712
Outdoor Room	147
Total Square Feet	3154
Garage	413

SIGNATURE SPACES:
Signature Outdoor Room
Grand Butler's Pantry
Multi-Purpose Room
Leisure Room

AVAILABLE OPTIONS:
Bedroom 5 ILO Leisure Room

*The finished square footage areas provided are calculated based on ANSI Z765-2013 standards as commissioned by National Association of Home Builders (NAHB). Finished square footage calculations were made based on plan dimensions only and may vary from the finished square footage of the house as built. Finished square footages vary based on elevation styles and plan options. Total square footage used in marketing includes the outdoor room.

HUDSON

HOME DESIGN

3,262 Square Feet, 4 Bedrooms, 2.5 Baths, 2 Car Garage, Signature Outdoor Room,
Den, Butler's Pantry, Leisure Room, Garage Storage

ON DISPLAY AT GREENVALE

*calm, cool and
collected.*



Outside the Hudson, daily life has its occasional share of stress. But the meticulous design that goes into this modern MainVue plan presents gentler sides of living in a setting where you can just be yourself.

Begin redefining what it means to truly

come home at the streetscape, where a contemporary façade puts its tasteful twist on the covered front porch twin columns with a custom designed wood and glass panel front door. Once inside, it goes farther - past the semi-enclosed den worthy of hosting co-workers or clients. And it grows even more visually stunning than the polished timber-look wide plank flooring that runs throughout most of the main level.

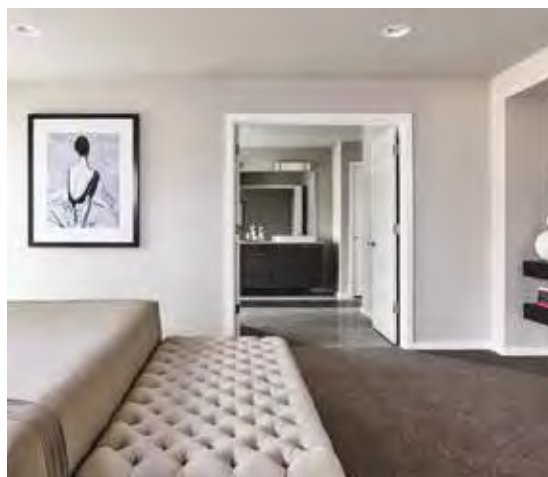
The Hudson is already set steps ahead with its drawn-to-perfection open-flow living area. Angles from the nearby dining room and sophisticated kitchen carve a savvy L-shape around the great room's comfortable haven.

Settle into a comfy chair near the warmth of the focal-point fireplace while the kitchen's Electrolux appliances kick into action. Pull handy ingredients from the walk-through grand

butler's pantry for an easy-prep dinner - or pour drinks at the kitchen's oversized island for cocktails with friends. From here, the party flows naturally through ceiling-height walls of sliding glass open into the all-season Signature Outdoor Room.

Ascend a unique kitchen-access staircase to the upper level where three secondary bedrooms fill three corners. Through a magnificent oversized double-door entry to the fourth corner, meanwhile, the master suite captures the essence of "aaaah". An oversized wardrobe dressing room, posh double vessel-sink vanity with Grohe designer faucets, Euro-style stand-alone soaking tub and sophisticated tile-surround shower complete the sanctuary scene.

Resolved to offer relaxation, the Hudson delivers a design that puts peace within reach.



*“design envy” is an understatement.
floor plan on next page.*

HUDSON

HOME DESIGN



*infatuation at
very first sight.*

*just some of the top features
found in this home design.*

- Signature Outdoor Room with wall-height sliding glass doors
- Generous Butler's Pantry with direct, and convenient access from Kitchen to Garage
- Stunning full-height painted glass backsplash at Kitchen counter
- Designer chrome Grohe faucet over dual bowl Stainless Steel sink
- Handsome quality wide-plank timber-look flooring
- Forward Den for a separated and private work setting
- Expansive Dressing Room at Master Suite
- Centrally located Leisure Room on upper floor providing a secondary entertainment space

3,262 SQUARE FEET | 4  | 2.5  | 2 



home design
details.

SQUARE FOOTAGE:

Main Floor	1329
Upper Floor	1753
Outdoor Room	180
Total Square Feet	3262
Garage	473

SIGNATURE SPACES:

Signature Outdoor Room
Den
Butler's Pantry
Leisure Room
Garage Storage

AVAILABLE OPTIONS:

Guest Room and ¾ Bath ILO Den
and Powder Room
Mud Room ILO Butler's Pantry

*The finished square footage areas provided are calculated based on ANSI Z765-2013 standards as commissioned by National Association of Home Builders (NAHB). Finished square footage calculations were made based on plan dimensions only and may vary from the finished square footage of the house as built. Finished square footages vary based on elevation styles and plan options. Total square footage used in marketing includes the outdoor room.





MAINVUE HOMES DESIGN

dare to dream.

VANTAGE

HOME DESIGN

3,394 Square Feet, 4 Bedrooms, 2.5 Baths, 3 Car Tandem Garage, Signature Outdoor Room, Den, Multi-Purpose Room, Grand Butler's Pantry, Leisure Room

a blueprint of sophistication.



When bold and beautiful meld in a flawless blend, the result is nothing short of the sophisticated design showcased in Vantage home design.

It begins with street-appeal starting at the front porch, which adds a striking dimension with presentation of over-

sized windows, stunning architectural finishes and a beautiful custom entry door with frosted glass inserts.

Beyond the entry is a graceful foyer topped with polished flooring and open den area.

Deeper on the main floor, a substantial space created by the L-shaped great room links the contemporary dining area, the entertainment-ready kitchen with its super-sized kitchen benchtop and the ever-popular signature outdoor room lined with a dynamic display of floor-to-ceiling window walls. Off-setting the Great Room space: the markedly more intimate multi-purpose room, suited for evening lounging and movie-nights.

As savvy as it is discreet, the flow-through grand butler's pantry extends behind the kitchen. On wet-weather days shopping for stocking up the

pantry, its protected access to the three-car garage (bolstered with a huge bonus storage space) is a lifesaver.

A make-it-what-you-want leisure room is arranged at the heart of the second floor connecting the frontend master suite and the backend secondary bedrooms. The consummate master suite features a robust bathroom, with designer free-standing tub, dual vanities and an oversized dressing room. Each secondary bedroom, meanwhile, offers its own walk-in closet and easy access to the hall bath.

This design series truly is a blueprint of pure sophistication.



*your dream,
a new reality.
floor plan on next page.*

VANTAGE

HOME DESIGN



*dynamic and
stunning.*

*just some of the top features
found in this home design.*

- Spacious 3 Car tandem Garage
- Blockbuster main floor Multi-Purpose Room with plush, stain-resistant carpeting
- Grand Butler's Pantry with additional walk-in pantry and direct access to 3 Car Garage
- Luxurious Master Suite with designer free-standing tub
- Perfectly placed Leisure Room on upper floor for added entertainment space
- Signature Outdoor Room with wall-height sliding glass doors
- Chic array of custom pendant lighting
- Open and centralized gourmet Kitchen



home design
details.

SQUARE FOOTAGE:	
Main Floor	1429
Upper Floor	1782
Outdoor Room	183
Total Square Feet	3394
Garage	680

SIGNATURE SPACES:	AVAILABLE OPTIONS:
Signature Outdoor Room	Bedroom 5 ILO Leisure Room
Den	Mud Room ILO Butler's Pantry
Multi-Purpose Room	3/4 Bathroom ILO Powder Room
Grand Butler's Pantry	Bedroom 2 Bath ILO Walk-In Closet
Leisure Room	

*The finished square footage areas provided are calculated based on ANSI Z765-2013 standards as commissioned by National Association of Home Builders (NAHB). Finished square footage calculations were made based on plan dimensions only and may vary from the finished square footage of the house as built. Finished square footages vary based on elevation styles and plan options. Total square footage used in marketing includes the outdoor room.

MARCELLO

HOME DESIGN

3,499 Square Feet, 4 Bedrooms, 2.5 Baths, 2 Car Garage, Signature Outdoor Room, Den, Multi-Purpose Room, Grand Butler's Pantry, Leisure Room

ON DISPLAY AT GREENVALE AND EAGLEMONT

calm, cool and collected.



When modern creativity marries inspired opportunity, innovation lights up.

Designs don't get any brighter than the Marcello, a home illuminated by beautiful oversized windows, walls of glass and MainVue's custom glass-panel entry door.

Work-from-home projects feel more

polished from the corner den off the sophisticated foyer. Down the hallway, kids' home-work nights can buzz in the semi-enclosed multi-purpose room – all while the open-flow great room hums with a vibe of its own.

In the far corner, a custom pendant illuminates chic dinner parties; in the other, a entertainment wall crowns the great room fireplace. In between: the ultimate center-piece - a Signature Outdoor Room. Three floor-to-ceiling window walls may slide open to surrounding space including the gourmet kitchen. Optimum light bathes interior space, enhancing open-air cock-tail parties or peaceful summer nights.

Hidden from the kitchen's Electrolux appliances and European cabinets, a grand butler's pantry doubles as a discreet conduit to the two-vehicle garage.

Deliver necessities directly through this pantry, or into the even larger walk-in pantry, out of sight from guests.

For greater guest-free intimacy, the top-of-the-staircase leisure room is perfect for pajama-time coffee sipping, practicing tough yoga poses, or hosting a kids' toy zone. Nearby: three secondary bedrooms, and a hallway to the master suite's classic double-door entrance, creating a separate wing ambiance. Soak in the luxurious stand-alone tub; select your wardrobe in the spacious walk-in closet; and dress for nightlife at the stylish double-vessel sink vanity.

Turn up the spotlight: the Marcello is ready to elevate any lifestyle.



*a new benchmark
in luxury.*
floor plan on next page.

MARCELLO

HOME DESIGN



*everything in
perfect harmony.*

*just some of the top features
found in this home design.*

- Centrally located Signature Outdoor Room surrounded by 3 oversized sliding glass doors
- Generous Grand Butler's Pantry for added storage space
- Main floor Multi-Purpose Room with plush, stain-resistant carpeting
- Striking Master Bedroom with expansive walk-in Dressing Room
- Dramatic 35" fireplace in Great Room with 6" metal surround in brushed stainless steel
- Custom front entry door with frosted glass inserts
- Master Suite with designer free-standing tub and 72" high semi-frameless shower
- Sparkling vessel-style sink on floating vanity in Powder Room

3,499 SQUARE FEET | 4  | 2.5  | 2 



*home design
details.*

SQUARE FOOTAGE:

Main Floor	1587
Upper Floor	1768
Outdoor Room	144
Total Square Feet	3499
Garage	427

SIGNATURE SPACES:

Signature Outdoor Room
Den
Multi-Purpose Room
Grand Butler's Pantry
Leisure Room

AVAILABLE OPTIONS:

Guest Room and 3/4 Bathroom ILO
Multi-Purpose Room and Powder
Room
Bedroom 4 with added Bathroom
Bedroom 5 ILO Leisure Room

*The finished square footage areas provided are calculated based on ANSI Z765-2013 standards as commissioned by National Association of Home Builders (NAHB). Finished square footage calculations were made based on plan dimensions only and may vary from the finished square footage of the house as built. Finished square footages vary based on elevation styles and plan options. Total square footage used in marketing includes the outdoor room.

NEWPORT

HOME DESIGN

3,514 Square Feet, 4 Bedrooms, 2.5 Baths, 2 Car Garage, Signature Outdoor Room,
Den, Multi-Purpose Room, Butler's Pantry, Leisure Room

ON DISPLAY AT EAGLEMONT, GREENVALE
AND TEHALEH

*layered in
luxury.*



Togetherness is invaluable. So is the luxury of privacy. Healthy balances of solitude – and spaces for important friends-and-family connections – are at home in the Newport. The best part: this four-bedroom design feels exactly like the way you were meant to live.

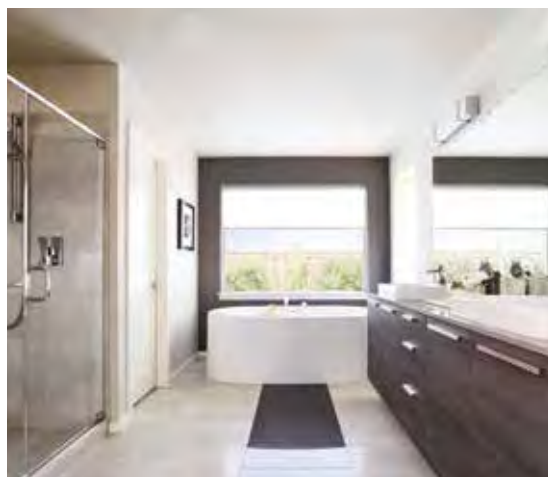
Beyond the foyer's modern glass-panel entry door, a den invites semi-sequestered work-from-home space. Walk across gorgeous timber-look wide plank floors, past privacy in a multi-purpose room, and emerge in the expansive great room. Your above-the-fireplace wall awaits personal art or electronic entertainment. Relax or play host as this ultra-open space embraces the chic dining room and gourmet kitchen (with hidden walk-through butler's pantry with bonus storage pantry). The home's full glass kitchen backsplash adds artful accenting to European soft-close cabinets crafted with brushed nickel pulls and tabs. Pair it with the great room's full-height sliding glass walls, and the kitchen opens to MainVue's Signature Outdoor Room – an intimate spot for sharing a bottle of wine or celebrating a team party.

On weekends, sneak upstairs for a nap in the master bedroom – a spacious suite filling the entire width of this plan.

Change from day clothes in either of two dressing rooms before pampering yourself in the stand-alone tub, dual-sink vanity and separate tiled shower.

Down the hall, three secondary bedrooms offer walk-in closets, and share a large bath across the hall from the handy utility/laundry room and spacious linen closet. Just around the corner: a leisure room – the go-to spot for exercise work-outs, homework or sleepovers.

With the Newport design, togetherness and privacy are one: who knew it could feel this good?



*making a powerful
first impression.
floor plan on next page.*

NEWPORT

HOME DESIGN

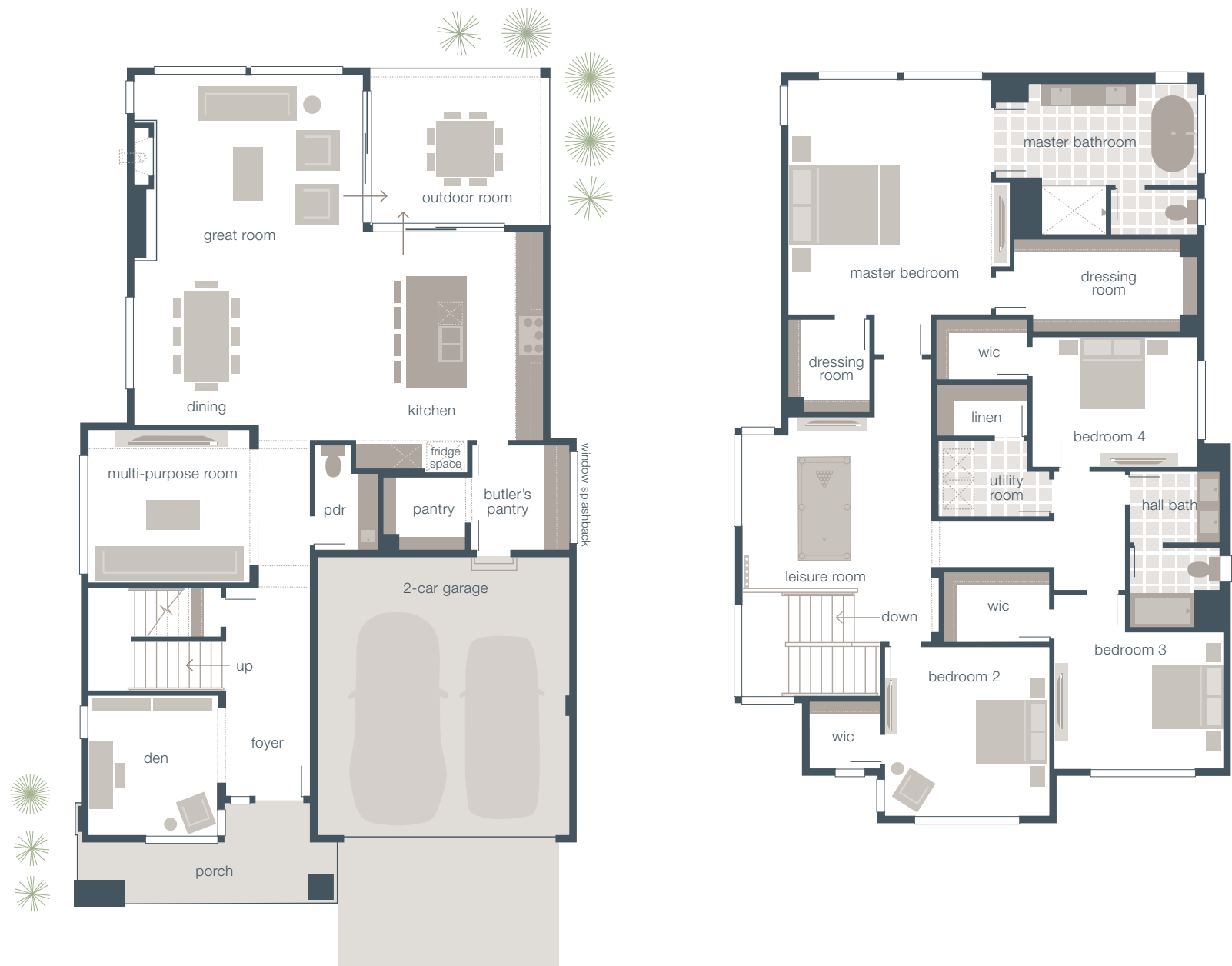


*elegant luxury,
classic style.*

*just some of the top features
found in this home design.*

- Spacious Butler's Pantry with unique window splashback for added natural light
- Forward Den for a separated and private work setting
- Blockbuster Multi-Purpose Room on main level with plush, stain-resistant carpeting
- Supersized, entertainment-ready Kitchen island with sleek Quartz countertops
- Signature Outdoor Room with wall-height sliding glass doors
- Striking Master Bedroom with dual Dressing Rooms
- Master Ensuite with designer free-standing tub
- Custom front entry door with frosted glass inserts

3,514 SQUARE FEET | 4  | 2.5  | 2 



*home design
details.*

SQUARE FOOTAGE:

Main Floor	1459
Upper Floor	1890
Outdoor Room	165
Total Square Feet	3514
Garage	433

SIGNATURE SPACES:

Signature Outdoor Room
Den
Multi-Purpose Room
Butler's Pantry
Leisure Room

AVAILABLE OPTIONS:

Mud Room ILO Butler's Pantry
Guest Room and ¾ Bath ILO Multi-Purpose Room and Powder Room
Bedroom 5 ILO Leisure Room
Bedroom 2 Bathroom

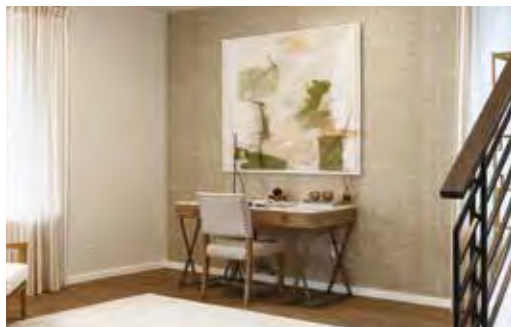
*The finished square footage areas provided are calculated based on ANSI Z765-2013 standards as commissioned by National Association of Home Builders (NAHB). Finished square footage calculations were made based on plan dimensions only and may vary from the finished square footage of the house as built. Finished square footages vary based on elevation styles and plan options. Total square footage used in marketing includes the outdoor room.

GLENDALE

HOME DESIGN

3,565 Square Feet, 4 Bedrooms, 2.5 Baths, 3 Car Garage, Signature Outdoor Room, Den, Grand Butler's Pantry, Leisure Room, Main Floor Master Bedroom

explore the exceptional.



Set your internal navigation system on "roam" in the Glendale because this much innovative space is worth exploring all on your own, room by room. Prefer a magnificent master suite on the main level?

MainVue has you covered. Covet a colossal upstairs leisure room that reaches

out to the two-story foyer? Consider it done. Even the three-car garage adds something extra with errand-day access to the walk-through grand butler's pantry and a step-in interior storage pantry.

Arrive at the entry's glass panel-framed door while stepping in to a soaring-ceiling foyer with attractive wide-plank timber-look floors, dynamic pendant lighting and two-story walls ready for art of your choosing. Guests may segue into the corner-set den or wait to be invited past the design's stylish staircase, and deeper toward the riveting dining room. From here, stream toward the kitchen's oversized service island and unrivalled Electrolux appliances - kick-starters to formal dinner parties and late-night snacks. Especially large window-walls off the kitchen and adjacent L-shaped great room open out to MainVue's light-infused semi-central Signature Outdoor Room.

For greater intimacy, continue beyond the discreet vestibule toward the corner-set master suite. It is graced with a tile-accented bath, Grohe faucets, a vanity with side-by-side vessel sinks, soothing stand-alone tub and step-in shower.

Upstairs, three secondary bedrooms - each with their own walk-in closets - connect to the casual-spot leisure room where spacious comfort shifts into down-time with games, movies, work-outs or crafts - potentially all in the same day.

With spaces like these in the Glendale, you're never at a loss for luxury.



*beautifully unique
with unbridled
character.*

floor plan on next page.

GLENDALE

HOME DESIGN



*classic and clean
design.*

*just some of the top features
found in this home design.*

- Main floor Master Suite with designer free-standing tub and expansive Dressing Room
- Grand entry with soaring double-story Foyer
- Open Den off Foyer for extra privacy away from Great Room
- Personal Walk-In Closets in each secondary Bedroom
- Centralized Signature Outdoor Room with 2 oversized sliding glass doors from Great Room and Kitchen
- Generous Grand Butler's Pantry with direct access from Kitchen to Garage
- Lofty upper floor Leisure Room open to view of Foyer below

3,565 SQUARE FEET

4 

2.5 

3 



home design
details.

SQUARE FOOTAGE:

Main Floor	2089
Upper Floor	1271
Outdoor Room	205
Total Square Feet	3565
Garage	628

SIGNATURE SPACES:

Signature Outdoor Room
Den
Grand Butler's Pantry
Leisure Room

AVAILABLE OPTIONS:

5 Bedrooms including dual Master Suites
Mud Room ILO Grand Butler's Pantry
Patio off Master Suite

*The finished square footage areas provided are calculated based on ANSI Z765-2013 standards as commissioned by National Association of Home Builders (NAHB). Finished square footage calculations were made based on plan dimensions only and may vary from the finished square footage of the house as built. Finished square footages vary based on elevation styles and plan options. Total square footage used in marketing includes the outdoor room.

BANKSIA

HOME DESIGN

3,824 Square Feet, 4 Bedrooms, 3.5 Baths, 3 Car Garage, Signature Outdoor Room, Den, Multi-Purpose Room, Grand Butler's Pantry, Leisure Room, Garage Storage

magical, minute-by-minute.



When you wake to a brilliant morning and first thoughts turn to choosing the best place in your home to begin the day, it's proof you're living in MainVue's beautiful Banksia design. Brilliant space fuels inspiration while a myriad of luxury features evokes sheer comfort. The result: choosing between an afternoon nap in the chic master suite or while lounging

with a movie in the main-level's corner-set multi-purpose room; tackling an assignment in the classic den off the modern foyer – or testing your Zen on an upstairs leisure room yoga mat. Do-it-yourselfers keep themselves busy in the three-car garage or at the grand kitchen island spacious enough for simultaneous homework and baking projects.

From convenient corners in its grand butler's pantry (with additional walk-in stock-up pantry) off the kitchen to entertainment-ready extremes in the great room, each angle and corner is riveting. For many, looking out on the double-story great room from the upstairs leisure room maximizes the modern vibe they covet.

Want more natural light? Soak it up in the spacious dining and great rooms via energy-efficient windows. Bright takes on a whole new

meaning with direct access via sliding window walls to the signature outdoor room, revealing luxury entertainment potential at its finest.

Luxurious intimacy, meanwhile, is found in a corner-set master suite behind superior-sized interior doors. Tile accents adorn a stand-alone soaking tub and dual vessel-sink vanity with Grohe designer faucets. An expansive dressing room is nearby.

None of three secondary bedrooms shares a common wall with another – yet each enjoys its own walk-in closet. The largest bedroom features a generous en suite beyond a private vestibule.

With spaces that reward everyday living, time is always on your side in the Banksia.



*open plan living
at its very best.
floor plan on next page.*

BANKSIA

HOME DESIGN



*an icon in style
and design.*

*just some of the top features
found in this home design.*

- Generous amount of storage space found in the 3-Car Garage
- Soaring two-story ceiling in Great Room with extended height windows for a flood of natural light
- Grand Butler's Pantry with plenty of storage and extra Pantry space behind a frosted door
- Gorgeous energy-saving Kitchen appliances
- Blockbuster Multi-Purpose Room on main floor with plush, stain-resistant carpeting
- Signature Outdoor Room with wall-height sliding glass doors
- Lofty upper floor Leisure Room open to view of Great Room below
- Indulgent stand-alone soaking tub in luxurious Master Bath



home design
details.

SQUARE FOOTAGE:

Main Floor	1682
Upper Floor	1957
Outdoor Room	185
Total Square Feet	3824
Garage	656

SIGNATURE SPACES:

Signature Outdoor Room
Den
Multi-Purpose Room
Grand Butler's Pantry
Leisure Room
Garage Storage

AVAILABLE OPTIONS:

Guest Suite with Private Bath ILO
Multi-Purpose Room and Grand
Butler's Pantry shelving
¾ Bathroom ILO Powder Room
Mud Room ILO Grand Butler's Pantry

*The finished square footage areas provided are calculated based on ANSI Z765-2013 standards as commissioned by National Association of Home Builders (NAHB). Finished square footage calculations were made based on plan dimensions only and may vary from the finished square footage of the house as built. Finished square footages vary based on elevation styles and plan options. Total square footage used in marketing includes the outdoor room.





MAINVUE HOMES

*love your
mainvue home.*

LAWSON

HOME DESIGN

3,889 Square Feet, 4 Bedrooms, 4.5 Baths, 2 Car Garage, Signature Outdoor Room, Den, Multi-Purpose Room, Grand Butler's Pantry, Leisure Room

*lofty
luxury.*



Natural light, expansive volume and soaring ceilings blend meticulously in the Lawson – a design where only the sparkling night sky beyond the home's spectacular signature outdoor room reaches higher. From the center of the main-level, connecting the alluring great room, sophisticated style radiates upward to the

second-floor outlook, and outward in multiple dazzling directions.

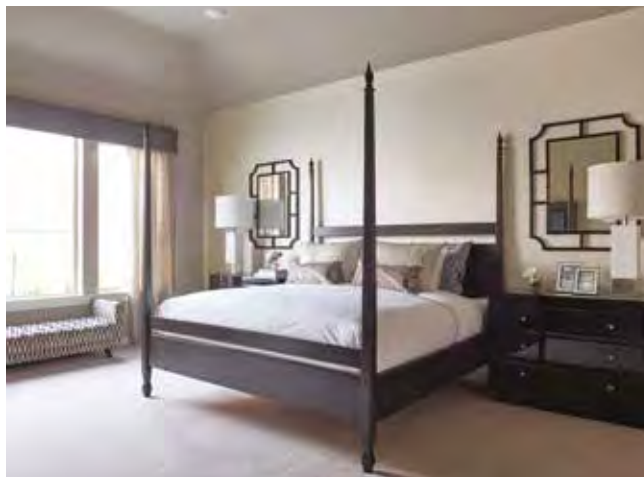
Toward the front, a gallery-like foyer connects with the den – a hybrid for comfort/business – just off the entry. From here, it's easy to check in on activities buzzing in the nearby multi-purpose room – flexible space equally ready for homework or gaming, and backlit by an extra-wide window.

Good times also swell into the chic dining room and generous outdoor room. Both connect via sliding glass window-walls to the dynamic kitchen – a hub of functional aesthetics. Luxury presentation shows in its gleaming stainless steel appliances, and quartz-top counters and supersized kitchen island.

Everyday essentials are as close as the walk-through grand butler's pantry,

which links to the garage and additional walk-in pantry, enclosed for extended, discreet space for convenient party preparation.

Beyond the panoramic loft upstairs, carve out important time for yourself in the master suite's protected privacy. Windowlight dazzles over the bath's designer, free-standing soaking tub, tile-accent shower and double-vessel sink vanities – both near an impressively large, separate dressing room. From the kick-your-feet-up leisure room at the top of the staircase, cozy niches, walk-in closets and two ensuites prove that there is always more than meets the eye in The Lawson.



*the future of
sophistication
and elegance.
floor plan on next page.*

LAWSON

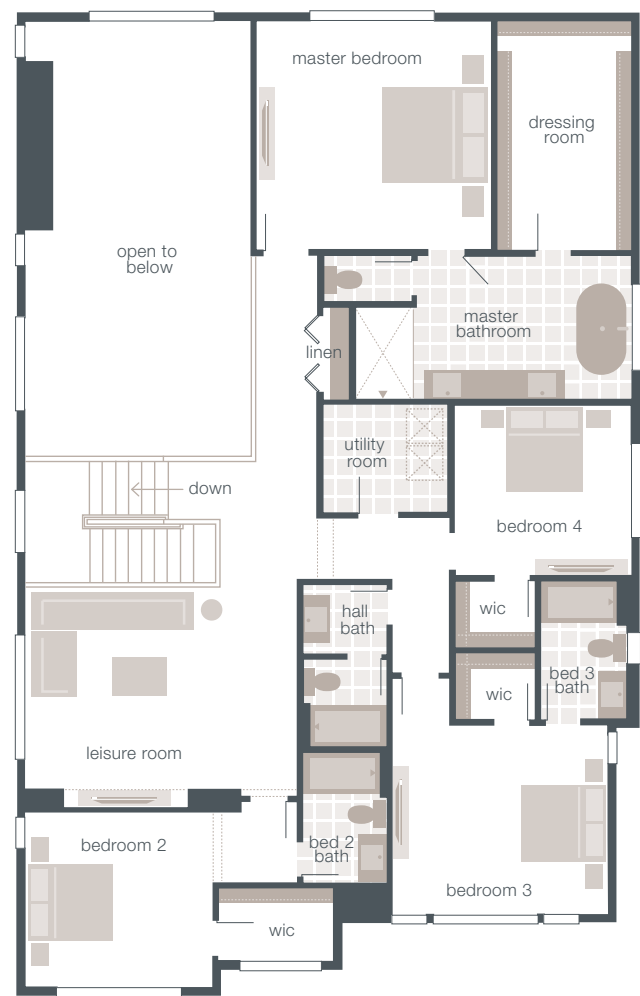
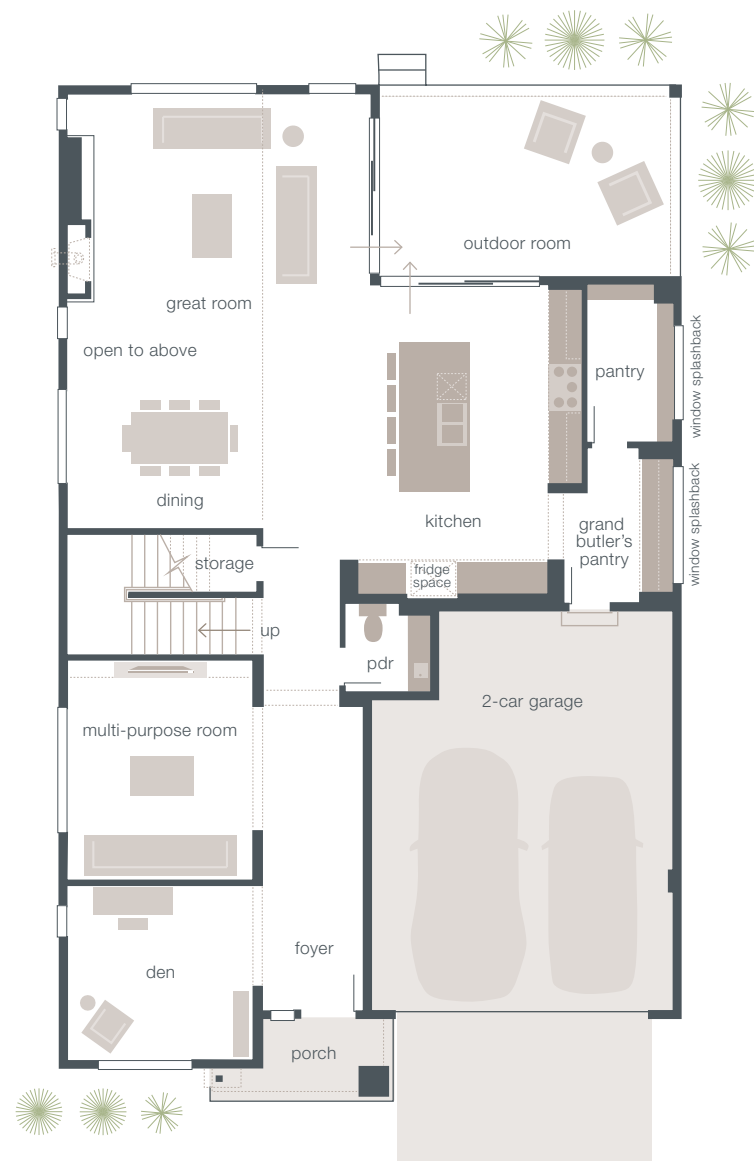
HOME DESIGN



*premium style
in every detail.*

*just some of the top features
found in this home design.*

- Soaring double-story Dining and Great Room
- Grand Butler's Pantry with additional walk-in Pantry, both with a unique window-splashback and direct access to Garage
- Den and Multi-Purpose Room located off dynamic entry Foyer
- Expansive Signature Outdoor Room with direct access to Kitchen and Great Room
- Perfectly placed Leisure Room on the upper floor for an extra entertainment space
- Luxurious Master Suite with designer free-standing tub
- Walk-in closets at all secondary Bedrooms



home design
details.

SQUARE FOOTAGE:

Main Floor	1692
Upper Floor	1960
Outdoor Room	237
Total Square Feet	3889
Garage	495

SIGNATURE SPACES:

Signature Outdoor Room
Den
Multi-Purpose Room
Grand Butler's Pantry
Leisure Room

AVAILABLE OPTIONS:

Guest Suite with private Bath and Walk-In Closet ILO Den and Multi-Purpose Room
Guest Room ILO Multi-Purpose Room
Mud Room ILO Grand Butler's Pantry
Bedroom 5 ILO Leisure Room

*The finished square footage areas provided are calculated based on ANSI Z765-2013 standards as commissioned by National Association of Home Builders (NAHB). Finished square footage calculations were made based on plan dimensions only and may vary from the finished square footage of the house as built. Finished square footages vary based on elevation styles and plan options. Total square footage used in marketing includes the outdoor room.

ASTORIA

HOME DESIGN

4,026 Square Feet, 4 Bedrooms, 3.5 Baths, 2 Car Garage, Signature Outdoor Room, Den, Multi-Purpose Room, Grand Butler's Pantry, Leisure Room

ON DISPLAY AT EAGLEMONT AND EDGESTONE

*savoring the
grand reserve.*



Pop a cork on all the possibilities in the Astoria – a lively design with always something more to celebrate. Just past the modern twin-columned entry porch, the foyer debuts a dashing corner-set den for quiet study or work. Mix up the vibe by opening an innovative window-wall connected to the adjacent multi-purpose room for a far more expansive feel.

Down the hallway, glide across magnificent timber-look wide plank polished flooring until the open-flow living area bursts into view. Custom pendant lighting in the dining room pops just around the corner from an especially light-filled great room.

Spectacular ceiling-height sliding walls of glass open to reveal the corner-set Signature Outdoor Room – the perfect setting for weekend brunch.

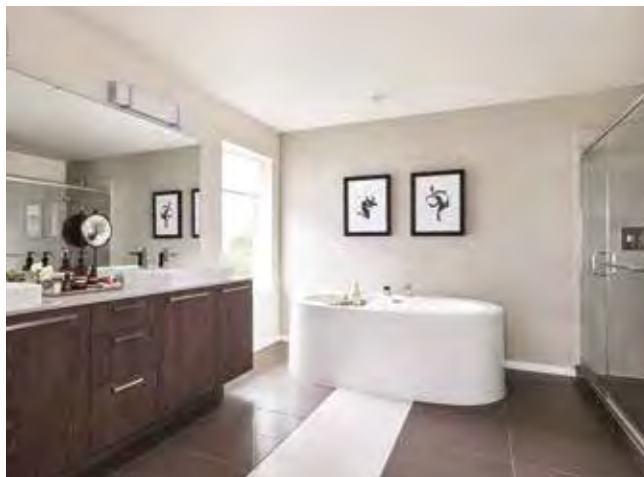
Whip up family favorites using energy-efficient Electrolux kitchen appliances framed by gorgeous soft-close European cabinets with brushed nickel fixtures.

Even if unexpected guests drop by, the alcove-like grand butler's pantry (and bonus walk-in pantry) is readily stocked thanks, in part, to easy delivery access through the two-car garage.

For even more entertainment, ascend the staircase, where the Astoria's popular leisure room sweeps toward oversized windows welcoming splashes of natural light. Three secondary bedrooms – one with its own bath – show off at the home's back side.

For added twists on upstairs luxury, enter the master suite – a wealth of space reserved for the entire front of this design. Off one side of the sleeping quarters: an enviable wardrobe dressing room. Off the other: a contemporary bath suite with trend-defining vessel sinks, a bubble-bath-ready soaking tub, and separate, tile-surround enclosed shower.

Given its zest for exceptional living, the Astoria has quickly become a toast-worthy favorite.



*cutting edge style
around every corner.
floor plan on next page.*

ASTORIA

HOME DESIGN

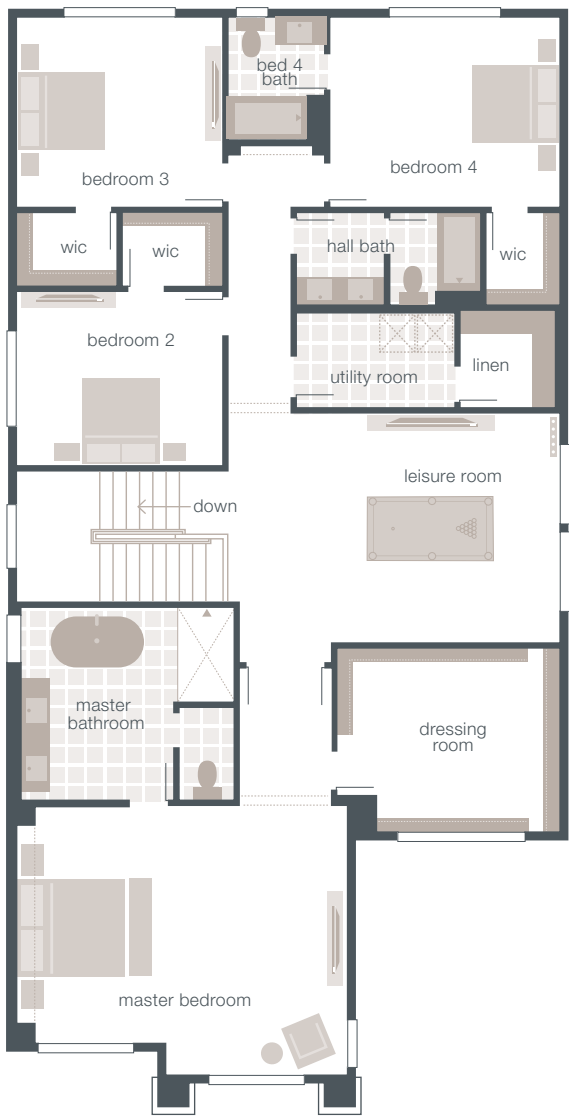
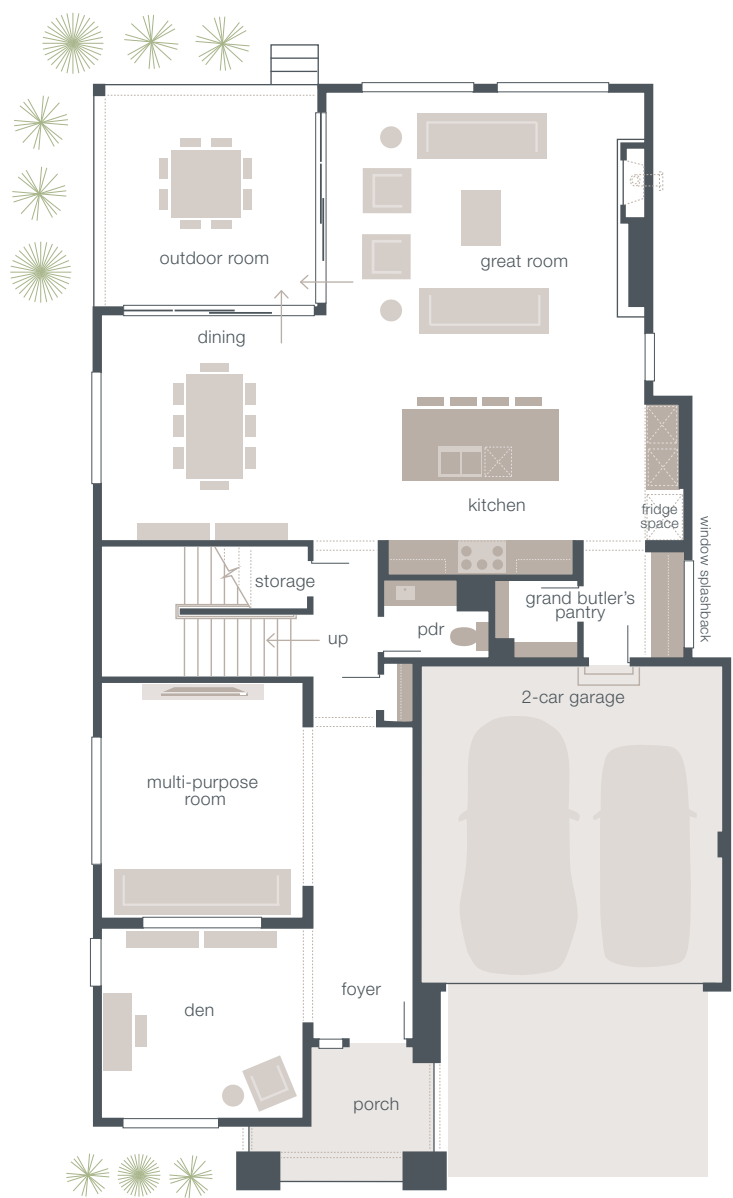


*surround yourself
in luxury.*

*just some of the top features
found in this home design.*

- Striking Master Bedroom with plush carpet and extended with sitting niche
- Gorgeous energy-saving Kitchen appliances
- Main floor Multi-Purpose Room with modern see-through design to Den
- Signature Outdoor Room with wall-height sliding glass doors
- Grand Butler's Pantry with additional walk-in Pantry and direct access to Garage
- Custom front entry door with frosted glass inserts
- Dramatic 35" fireplace in Great Room with 6" metal surround in brushed Stainless Steel
- Supersized, entertainment-ready Kitchen island with sleek Quartz countertops

4,026 SQUARE FEET | 4  | 3.5  | 2 



home design
details.

SQUARE FOOTAGE:

Main Floor	1687
Upper Floor	2142
Outdoor Room	197
Total Square Feet	4026
Garage	399

SIGNATURE SPACES:

Signature Outdoor Room
Den
Multi-Purpose Room
Grand Butler's Pantry
Leisure Room

AVAILABLE OPTIONS:

Guest Room and ¾ Bathroom ILO
Multi-Purpose Room and Powder
Room
Bedroom 5 ILO Leisure Room
Mud Room ILO Grand Butler's Pantry

*The finished square footage areas provided are calculated based on ANSI Z765-2013 standards as commissioned by National Association of Home Builders (NAHB). Finished square footage calculations were made based on plan dimensions only and may vary from the finished square footage of the house as built. Finished square footages vary based on elevation styles and plan options. Total square footage used in marketing includes the outdoor room.

AVOCA

HOME DESIGN

4,078 Square Feet, 4 Bedrooms, 3.5 Baths, 3 Car Garage, Signature Outdoor Room, Den, Multi-Purpose Room, Grand Butler's Pantry, Leisure Room

ON DISPLAY AT TEHALEH AND MCCORMICK

*fashionably
infatuating.*



Caught up in a crush – or maybe a full-blown infatuation with this ultra-volume four-bedroom design? You're forgiven, because the Avoca clearly reciprocates with attractive modern space in all the right places.

From the soaring-ceiling foyer that flirts with the upper level, twirl off the entry

into a den that allows professionals to set private work-from-home boundaries. Delve deeper into the dramatic double-story great room – a perfect pairing with the sophisticated dining room with chic custom pendant lighting - and mutually connected to the savvy kitchen.

Attractive European kitchen cabinets pair here with energy-efficient Electrolux appliances to whip up on-the-spot dinners just steps from the walk-through grand butler's pantry (with its separate step-in super stock-and-storage pantry).

To relax, slide into slippers before snuggling up for on-screen entertainment in the expansive corner-set multi-purpose room – or after stepping through the kitchen's magnificent full-height sliding glass walls into the centered Signature Outdoor Room.

It's equally restful upstairs. At the staircase peak, look out onto the great room or foyer from the front-facing leisure room. This more-than-generous flexible space accesses three secondary bedrooms – one with its own private bath, and all with their own walk-in closets. Spoiled like this, no one complains about laundry because the utility room is so close to the shared hallway.

It's separate from an exclusive upstairs hallway leading toward the master suite – flush with an expansive wardrobe dressing room – and rich in bath amenities, including stylish Grohe faucets, chic vessel sinks and a decadent corner-set, free-standing soaking tub.

Your house crush doesn't come any more beautiful than the Avoca.



*advanced beyond
all belief.*
floor plan on next page.

AVOCA

HOME DESIGN



*designed to suit
your lifestyle.*

*just some of the top features
found in this home design.*

- Soaring double-story Foyer, Great Room and Dining
- Grand Butler's Pantry with additional walk-in Pantry and direct access to 3 Car Garage
- Corner-situated Multi-Purpose Room on main floor for a separated entertainment space
- Centralized Signature Outdoor Room with 2 walls of sliding glass doors
- Master Ensuite with designer free-standing tub and 72" high semi-frameless shower enclosure
- Lofty upper floor Leisure Room open to view of Foyer below
- Three secondary bedrooms each with a Walk-In Closet
- Supersized, entertainment-ready Kitchen island with sleek Quartz countertops

4,078 SQUARE FEET | 4  | 3.5  | 3 



*home design
details.*

SQUARE FOOTAGE:

Main Floor	1809
Upper Floor	2058
Outdoor Room	211
Total Square Feet	4078
Garage	720

SIGNATURE SPACES:

Signature Outdoor Room
Den
Multi-Purpose Room
Grand Butler's Pantry
Leisure Room

AVAILABLE OPTIONS:

Guest Suite with Private Bath ILO
Multi-Purpose Room
Guest Room with ¾ Bathroom ILO
Den and Powder Room
Guest Room ILO Den
Mud Room ILO Grand Butler's shelving

*The finished square footage areas provided are calculated based on ANSI Z765-2013 standards as commissioned by National Association of Home Builders (NAHB). Finished square footage calculations were made based on plan dimensions only and may vary from the finished square footage of the house as built. Finished square footages vary based on elevation styles and plan options. Total square footage used in marketing includes the outdoor room.

DUXTON

HOME DESIGN

4,102 Square Feet, 4 Bedrooms, 4.5 Baths, 2 Car Garage, Signature Outdoor Room, Den, Multi-Purpose Room, Grand Butler's Pantry, Leisure Room

ON DISPLAY AT GREENVALE AND EAGLEMONT

*star-studded
ensemble.*



Without a doubt, modern living in the Duxton proves one thing: this is a powerful ensemble created by a cast of stars. Opening credits start at the foyer, just beyond the glass-paneled custom entry door, near where a masterful den offers space for work-from-home business.

Down the hallway, the semi-enclosed multi-purpose room offers 24/7 TV viewing possibilities. Toward the rear of the home, a new dimensional design emerges: the open-flow great room rises with a dramatic soaring wall above the fireplace, ideally cast for eventual electronic entertainment.

Prepare dinner parties from the gourmet kitchen's dazzling quartz countertops and Electrolux appliances, and serve in the adjacent dining room under custom overhead pendant lighting.

Move for dessert under the night-sky head-liner: the corner-set Signature Outdoor Room. This fresh air space connects through wall-height sliding glass doors off the great room and via the spotlight-worthy kitchen.

Supporting credit goes to a subtle, convenient, walk-through grand butler's

pantry connecting to both an extra bonus storage pantry and the plan's two-car garage.

Upstairs, at the end of its own private hallway, the master suite steals its scene by filling the width of the rear of this plan with luxurious space – including two separate wardrobe dressing rooms – while the fully-appointed master bath offers a stand-alone soaking tub, tiled shower and stylish Grohe faucets.

A cast of three secondary bedrooms – all with their walk-in closets and bathrooms boasting vessel sinks – spin off from the popular leisure room, ready for crafting, gaming or homework. Even with MainVue's myriad luxury inclusions, eight rooms or special features in this plan offer expanded options.

With the Duxton, marquee living has never been finer.



*elevating style and
luxury to new
heights.*

floor plan on next page.

DUXTON

HOME DESIGN



*sophisticated
refinement.*

*just some of the top features
found in this home design.*

- Striking Master Bedroom with dual Dressing Rooms and double door entry
- European style cabinetry with sleek satin nickel pulls and tabs
- Blockbuster Multi-Purpose Room on main floor with low profile theater window and plush carpeting
- Supersized, entertainment-ready Kitchen island with sleek Quartz countertops
- Easily accessible Grand Butler's Pantry with extra storage Pantry and direct access to Garage
- Signature Outdoor Room with 2 walls of sliding glass doors
- Forward Den off Foyer for ultimate privacy
- Stunning full-height painted glass backsplash at Kitchen counter
- Handsome quality wide-plank timber-look flooring

4,102 SQUARE FEET | 4  | 4.5  | 2 



*home design
details.*

SQUARE FOOTAGE:

Main Floor	1694
Upper Floor	2202
Outdoor Room	206
Total Square Feet	4102
Garage	469

SIGNATURE SPACES:

Signature Outdoor Room
Den
Multi-Purpose Room
Grand Butler's Pantry
Leisure Room

AVAILABLE OPTIONS:

Guest Room ILO Multi-Purpose Room
¾ Bathroom ILO Powder Room
Mud Room ILO Grand Butler's Pantry

*The finished square footage areas provided are calculated based on ANSI Z765-2013 standards as commissioned by National Association of Home Builders (NAHB). Finished square footage calculations were made based on plan dimensions only and may vary from the finished square footage of the house as built. Finished square footages vary based on elevation styles and plan options. Total square footage used in marketing includes the outdoor room.

DEVLON

HOME DESIGN

4,126 Square Feet, 4 Bedrooms, 4.5 Baths, 2 Car Garage, Signature Outdoor Room, Den, Multi-Purpose Room, Grand Butler's Pantry, Leisure Room, Garage Storage

portfolio for luxury living



Every facet of the Devlon is methodically planned to meld maximum style, luxury and practicality. After that, you make all the rules. Choose whether you arrive home through the chic glass-panel entry door – or via the discreet access into the grand butler's pantry (which can be modified into a mud room) from the two-bay garage with bonus storage.

Once inside, wrap up some work in the stylish front-facing den – or leave it for later and instead ascend the foyer showpiece: a two-story, open-ceiling staircase with artisan open-iron railing. A vestibule to oversized doors opens into master suite luxury. Enjoy a nap, or pop into workout clothes in either of two dressing rooms. The master bath awaits with its soothing stand-alone tub, tile and glass accent shower and modern double-sink vanity.

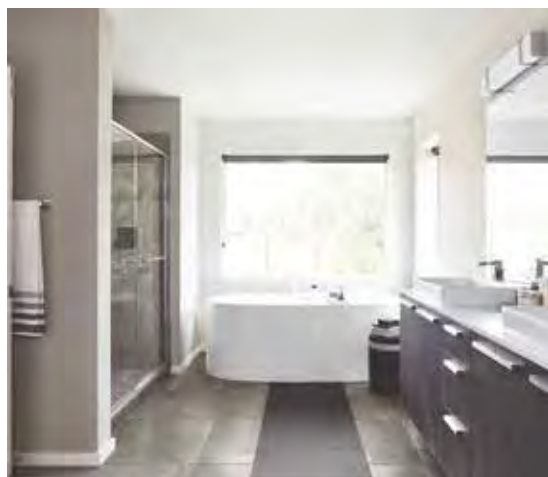
Three secondary bedrooms, two with ensuites, are arranged down the hallway. The same hall leads to the lofted-ceiling leisure room designed with enough space for a large gaming table. The room expands with its view over the equally contemporary great room below.

Back on the main level, display a Smart TV in an even smarter space off the foyer: the multipurpose room. Its

modern designer see-through wall shares visual flow with the sophisticated dining room, and via clarity of sliding window walls, the popular signature outdoor room.

Chic finishes add an urbane vibe to the kitchen. A storage pantry and extra wrap-around counters grand butler's pantry add convenient meal preparation space – but it's the supersized kitchen island facing the great room that catches the spotlight for party food or grab-and-go meals.

In the Devlon, it's not just the good looks and amenities, but the versatility that becomes your true catalyst for modern luxury living.



*inspiring up-tempo
living.*

floor plan on next page.

DEVLON

HOME DESIGN



luxury defined.

*just some of the top features
found in this home design.*

- Open entry Den located off of dynamic entry Foyer adjacent to an artfully crafted staircase
- Chic Multi-Purpose Room with see-through wall window to an elegant Dining Room
- Soaring double story Great Room creating an open and light-filled environment
- Signature Outdoor Room with wall-height sliding glass doors
- Gourmet Kitchen with a seamless flow into the Grand Butler's Pantry with extra storage and a unique window splashback
- Master Suite with dual Dressing Rooms and designer free-standing tub
- Perfectly placed Leisure Room on upper floor for added entertainment space
- Additional storage space in Garage



home design
details.

SQUARE FOOTAGE:

Main Floor	1705
Upper Floor	2194
Outdoor Room	227
Total Square Feet	4126
Garage	486

SIGNATURE SPACES:

Signature Outdoor Room
Den
Multi-Purpose Room
Grand Butler’s Pantry
Leisure Room
Garage Storage

AVAILABLE OPTIONS:

Guest Suite and Guest Leisure ILO Den and Multi-Purpose Room
Guest Room and 3/4 Bath ILO Multi-Purpose Room and Powder Room
Mud Room ILO Grand Butler’s Pantry

*The finished square footage areas provided are calculated based on ANSI Z765-2013 standards as commissioned by National Association of Home Builders (NAHB). Finished square footage calculations were made based on plan dimensions only and may vary from the finished square footage of the house as built. Finished square footages vary based on elevation styles and plan options. Total square footage used in marketing includes the outdoor room.

ELDESSA

HOME DESIGN

4,241 Square Feet, 4 Bedrooms, 4.5 Baths, 2 Car Garage, Signature Outdoor Room, Den, Multi-Purpose Room, Grand Butler's Pantry, Leisure Room, Garage Storage

ON DISPLAY AT ALLURA AND TEN TRAILS

*untethered
imagination.*



Homebuyers dreaming about perfecting home innovations envision the Eldessa – a modern façade framing the entrance to a welcoming interior foyer.

Inside the compelling foyer, a comfortable corner-set den is ready when work/career calls. Gorgeous polished hallway flooring continues dancing toward the

semi-open multi-purpose room – but consider the options of enclosing it for enhanced privacy.

Spontaneity follows into the great room. Wrap up in warmth resonating from its focal-point stainless steel framed fire-place. This entire shared living space shifts your lifestyle into freestyle, surrounded by the up-for-anything gourmet kitchen. At its edge: the chic dining room, framed by magnificent oversized windows. Atop quartz counters in the grand butler's pantry just off the kitchen, European-style cabinets store everything needed to prepare an extravagant weekend brunch or arrange game-winning snacks for after-parties hosted in the adjacent oversized signature outdoor room.

No matter the time of year, it's simple to stay organized by tucking seasonal décor in the hallway's under-the-staircase closet. Bank larger pieces into bonus

space built into the double car garage.

Convenience becomes exceptionally attractive in the upstairs master suite, where dual dressing rooms dovetail off sleeping quarters, separate from the resort-like master bath amenities: Double sink vanity surrounded by designer tile; sparkling glass-enclosed shower, and a spa-style soaking tub crowned by an art-crafted window beaming natural light.

Nearby, energizing light floats into the leisure room, where there's always time to linger.

Find clean laundry in the utility room and two concealed linen closets. It means all three secondary bedrooms – including two with their own ensuites, and all with personal walk-in closets – are tidy by nature.

Organized. Spacious. Stylish. The Eldessa: it's more than a dream.



*the best in luxury
design.*
floor plan on next page.

ELDESSA

HOME DESIGN



*revel in your
newfound home.*

*just some of the top features
found in this home design.*

- Oversized Signature Outdoor Room with wall-height sliding glass doors
- Open entry Den and Multi-Purpose Room located off entry Foyer
- Oversized windows lining the Dining area allowing a flood of natural light
- Extra storage space in the Garage
- Walk-in closets at all secondary Bedrooms
- Private ensuite Baths at Bedrooms 2 and 3
- Indulgent soaking tub in luxurious Master Bath
- Grand Butler's Pantry off Kitchen with Quartz countertop and European style cabinetry
- Supersized, entertainment-ready Kitchen island with sleek Quartz countertops

4,241 SQUARE FEET | 4  | 4.5  | 2 



home design
details.

SQUARE FOOTAGE:

Main Floor	1721
Upper Floor	2287
Outdoor Room	233
Total Square Feet	4241
Garage	468

SIGNATURE SPACES:

- Signature Outdoor Room
- Den
- Multi-Purpose Room
- Grand Butler's Pantry
- Leisure Room
- Garage Storage

AVAILABLE OPTIONS:

- Guest Room ILO Multi-Purpose Room
- ¾ Bathroom ILO Powder Room

*The finished square footage areas provided are calculated based on ANSI Z765-2013 standards as commissioned by National Association of Home Builders (NAHB). Finished square footage calculations were made based on plan dimensions only and may vary from the finished square footage of the house as built. Finished square footages vary based on elevation styles and plan options. Total square footage used in marketing includes the outdoor room.

MAINVUE HOMES

STRAIGHT FROM THE SOURCE.

MEET OUR COMMUNITY, OUR NEIGHBORS AND OUR DREAMERS.

For those who purchase a MainVue home, there is no such thing as six degrees of separation. We are as close as our neighborhood ties and our community connections. While playing in our parks. While strolling our landscaped sidewalks. While waiting at the bus stop to our award-winning schools. On social media or over the backyard fence, sharing the satisfaction of owning a MainVue home links our homebuyers as kindred spirits.

SHARE YOUR STORY WITH US.

Every MainVue homeowner or visitor has a story to share. From an exciting move-in experience, a compliment to an outstanding consultant, kudos to a design element or giving vital suggestions, we want to hear it all.

Visit the MainVue Homes website or any social media outlet and let the world know what you think about MainVue Homes.

SHARE YOUR STORY SOCIALLY OR AT
MAINVUEHOMES.COM



OUTSTANDING QUALITY AND CUSTOMER SERVICE:

"They are customer service oriented, prompt, and extremely polite and efficient."
- Dharmendra & Sangeetha

"Living in a well-designed and built home makes it all worth it."
- Steven & Judy

"Everyone who worked on the house...should be commended for a job well done. We are thrilled with the entire experience."
- Ben

"I seriously cannot say enough good things about this company or their staff! They are one of a kind."
- Jennifer



LEADING-EDGE INNOVATION, STYLE AND DESIGN:

"Looking at the market, you can't find anything compares to what MainVue offers."
- Luna

"As soon as we came in, we fell in love with it. It was one of those things where I looked around and it fit the personality we were looking for."
- Jerome

"It was a very clean, modern, style that you could still make your own."
- Natalie

"The house boasts luxury interiors and amazing large windows that fill the house with light all day long."
- Jason

WHAT FRIENDS AND FAMILY ARE SAYING:

"You get this huge impression when you first walk in of how open, elegant and modern it is. It is still surreal that it is our home."
- Lamar

"It was love at first sight."
- Jeffrey

"MainVue is truly the only builder in the market that has a modern, clean style to it and it fit our needs perfectly."
- Robin

FAVORITE MAINVUE FEATURES:

"Walking into our first MainVue home, it was exciting to me because the eyes immediately went to the open floor plans."
- Sundi

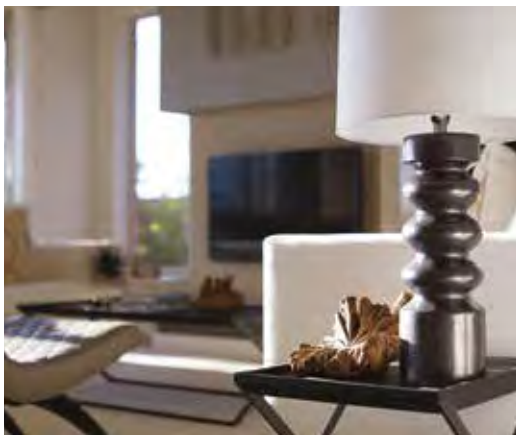
"One of our favorite parts of our MainVue home is the comfort and ease to be able to have get-togethers and parties. People can really be at any room in the house and no matter what they are doing they can be included." – Sundi

"It is a spacious, gorgeous home and you won't find anything else like it in Seattle."
- Jeffrey



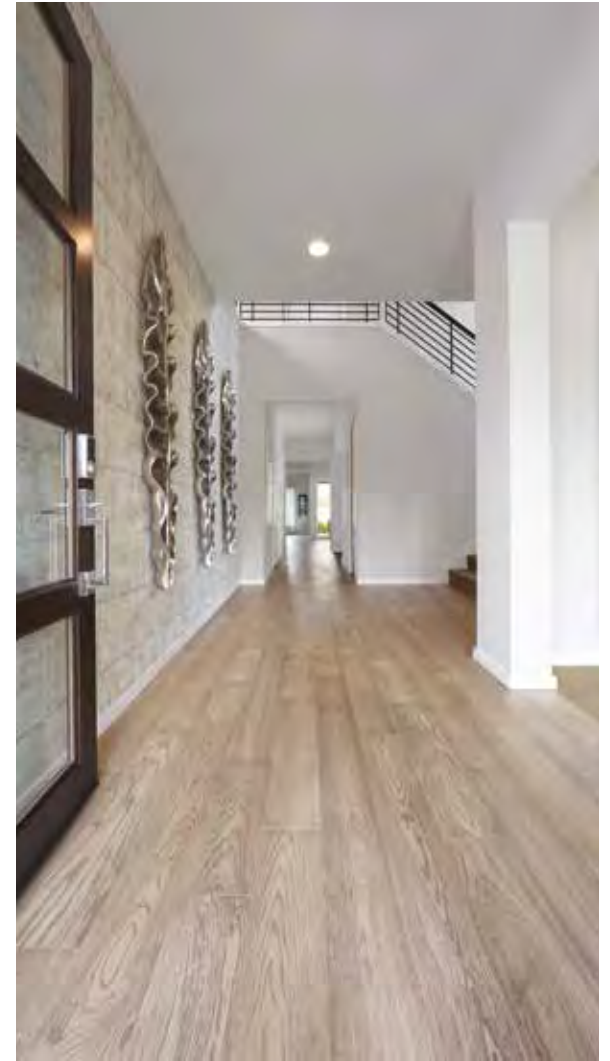
MAINVUE HOMES

cue the inspiration!









*discover your
“inner mainvue.”*

*endless inspiration with
mainvue homes.*





*colors, textures and
style with mainvue.
ask us about all your options.*





MAINVUE HOMES

*the difference is
everywhere.*

WORLD OF MODEL HOMES

GREENVALE IN AUBURN
8 MODELS ON DISPLAY
30313 111th COURT SE, AUBURN 98092

EAGLEMONT IN MONROE
6 MODELS ON DISPLAY
196th AVENUE SE, MONROE 98272

1.800.764.8171
MAINVUEHOMES.COM

