

A modern living room interior. In the center is a fireplace with a white surround and a dark screen. To the left is a dark leather sofa with an orange cushion. In front of the fireplace is a dark wood coffee table with a decorative sculpture. To the right is a light-colored armchair with a black and white patterned cushion. Large windows with dark frames and sheer curtains are in the background.

MAINVUE[®]
HOMES

THE DIFFERENCE IS
EVERYWHERE



*"It's a spacious, gorgeous home and
you won't find anything else like it."*

*- MainVue Homeowner
Jeffery*



#MYMAINVUE



MAINVUE HOMES
Redefining
Luxury





About MainVue

MainVue Commitment	14
MainVue Story	16
MainVue Difference	22
The MainVue Way	26-28
Philanthropy	27
Sustainability	28
World of Model Homes	34
Communities	40

Luxury Inclusions

44-60

Home Designs

66-136

Gardenia: 2,372 Square Feet / 3 Bedrooms / 2.5 Baths / 2 Car Garage	69-72
Clover: 2,622 Square Feet / 3 Bedrooms / 2.5 Baths / 2 Car Garage	73-76
Abelia: 2,727 Square Feet / 4 Bedrooms / 2.5 Baths / 2 Car Garage	77-80
Iris: 2,837 Square Feet / 4 Bedrooms / 2.5 Baths / 2 Car Garage	81-84
Orchid: 3,111 Square Feet / 4 Bedrooms / 2.5 Baths / 2 Car Garage	85-88
Juniper 3,139 Square Feet / 4 Bedrooms / 2.5 Baths / 2 Car Garage	89-92
Zinnia 3,290 Square Feet / 4 Bedrooms / 2.5 Baths / 2 Car Garage	93-96
Cypress 3,295 Square Feet / 4 Bedrooms / 2.5 Baths / 2 Car Garage	97-100
Birch 3,319 Square Feet / 4 Bedrooms / 2.5 Baths / 2 Car Garage	101-104
Verbena 3,561 Square Feet / 4 Bedrooms / 2.5 Baths / 2 Car Garage	105-108
Fuchsia 3,582 Square Feet / 4 Bedrooms / 2.5 Baths / 2 Car Garage	109-112
Rosa Duet 3,677 Square Feet / 5 Bedrooms / 3.5 Baths / 2 Car Garage	113-116
Dahlia 3,781 Square Feet / 4 Bedrooms / 2.5 Baths / 2 Car Garage	117-120
Briar 4,055 Square Feet / 4 Bedrooms / 3.5 Baths / 2 Car Garage	121-124
Ivy 4,109 Square Feet / 4 Bedrooms / 3.5 Baths / 3 Car Garage	125-128
Lotus 4,239 Square Feet / 4 Bedrooms / 4.5 Baths / 2 Car Garage	129-132
Azalea 4,417 Square Feet / 5 Bedrooms / 3.5 Baths / 2 Car Garage	133-136
Color Schemes	141-154
Facades	157-160





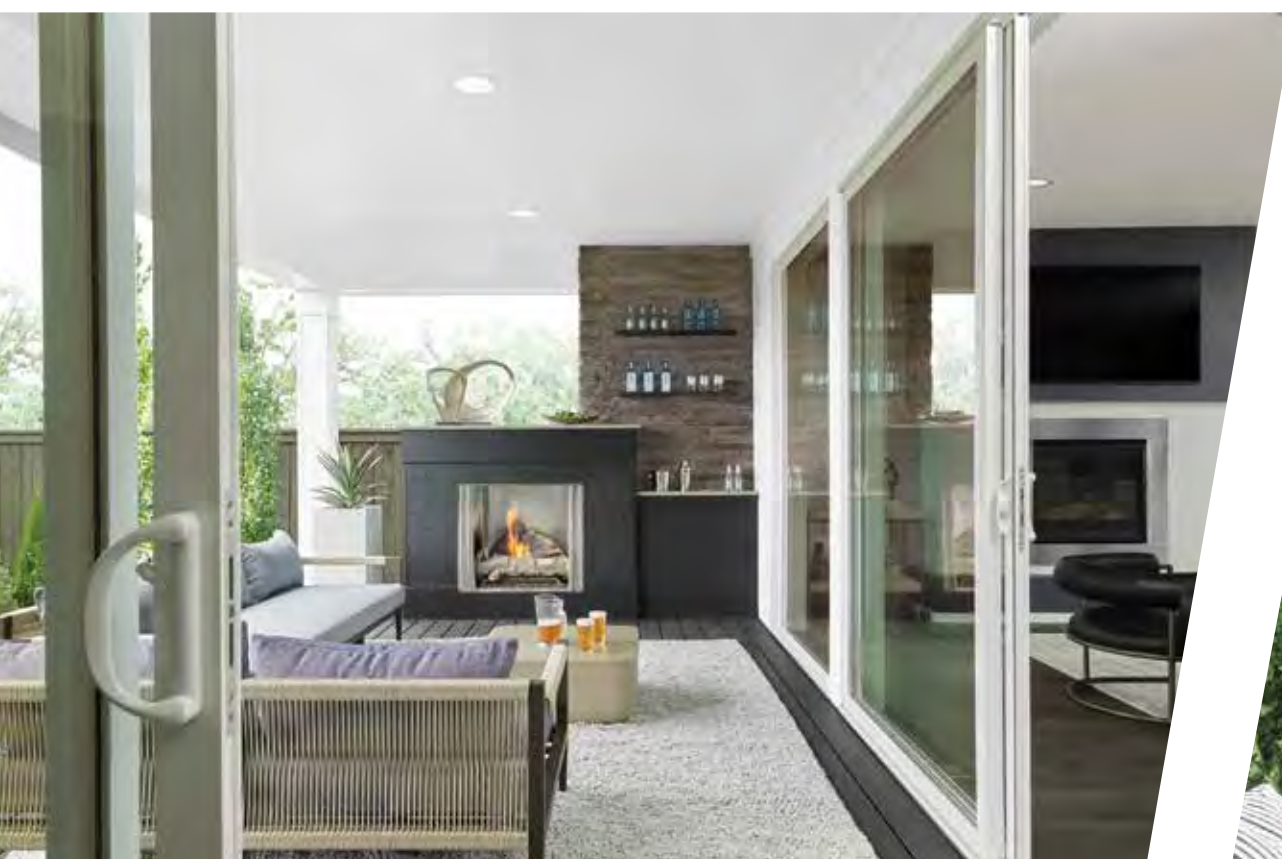
MAINVUE HOMES

Love where
you live



MAINVUE HOMES

Signature Outdoor Rooms





MAINVUE COMMITMENT

Our Purpose

Driven by our steadfast commitment to exceed customers' expectations, MainVue Homes is proud to be a premier builder of dynamic new homes in the Pacific Northwest.

In ways homebuyers could never have imagined, MainVue Homes consistently raises the bar on modern luxury home design and construction. We pledge that each angle and every detail in the new homes we build will reflect equally sophisticated and comfortable living.

MainVue crafts each of our homes with the finest quality, assuring the best value for a new luxury home in Washington State's most desirable locations.

When homebuyers put their trust in MainVue Homes, they know that our pledge to unparalleled customer care is instilled in our spirit and our purpose.





MAINVUE STORY

The Difference is Everywhere

Proven by its practices and dynamic by design, this trusted combination is just part of the reason MainVue Homes is a worldwide leader in premier residential design and construction.

From each angle and every perspective, MainVue Homes is raising the bar on home designs and living. Proven by its practices and dynamic by design, this trusted combination is just part of the reason MainVue Homes is a worldwide leader in premiere residential design and construction.

As part of the internationally respected Henley Properties Group, we are a proud partner of the Sumitomo Forestry Group, a venerable corporation with its own rich 320-plus-year heritage. Our global relationship now builds homes for more than 22,000 homebuyers a year. This success spans from Australia to Japan and – most recently – to the United States.

Using our international buying power, MainVue assures customers access to grand homes with superb value, further enhanced by exceptional – and occasionally unexpected – designer features. And we always remain true to our commitment: to build bold, distinctive and definitively modern new homes that capture the true meaning of luxury. The fresh results? Luxury designs that are thoughtfully crafted with incredible value and chic designer features that are not only within reach, but offer our full selection of exquisite luxury inclusions included as standard.

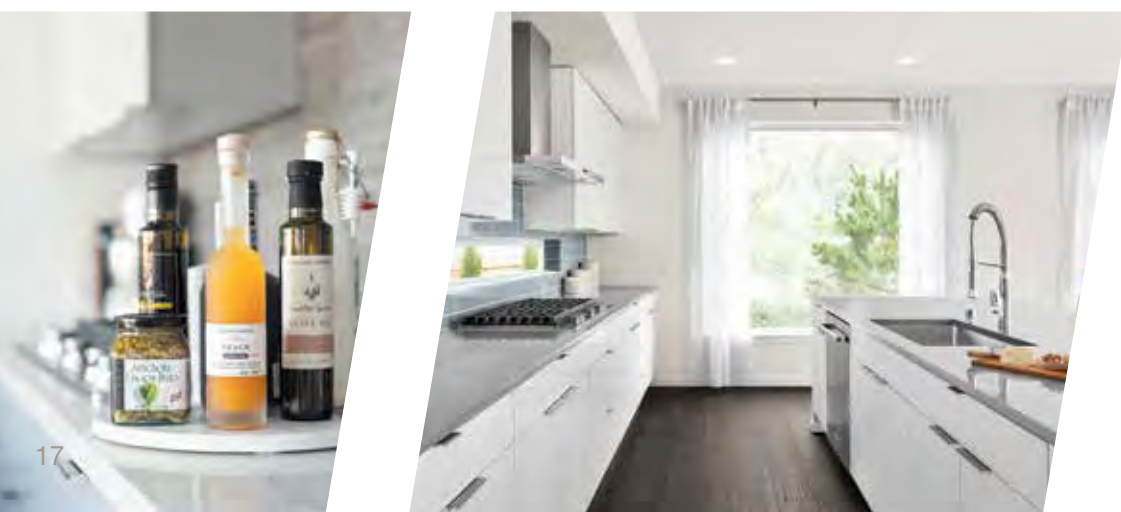
But we know it's not just about feeling it – it's also about believing it, and when it comes to their ultimate and final selection of a home, discerning buyers know that their choice hinges on redefining luxury. It's why we set a new bar for excellence through innovative practices and dynamic designs. Redefining luxury is MainVue's mission. You can count on this from us.

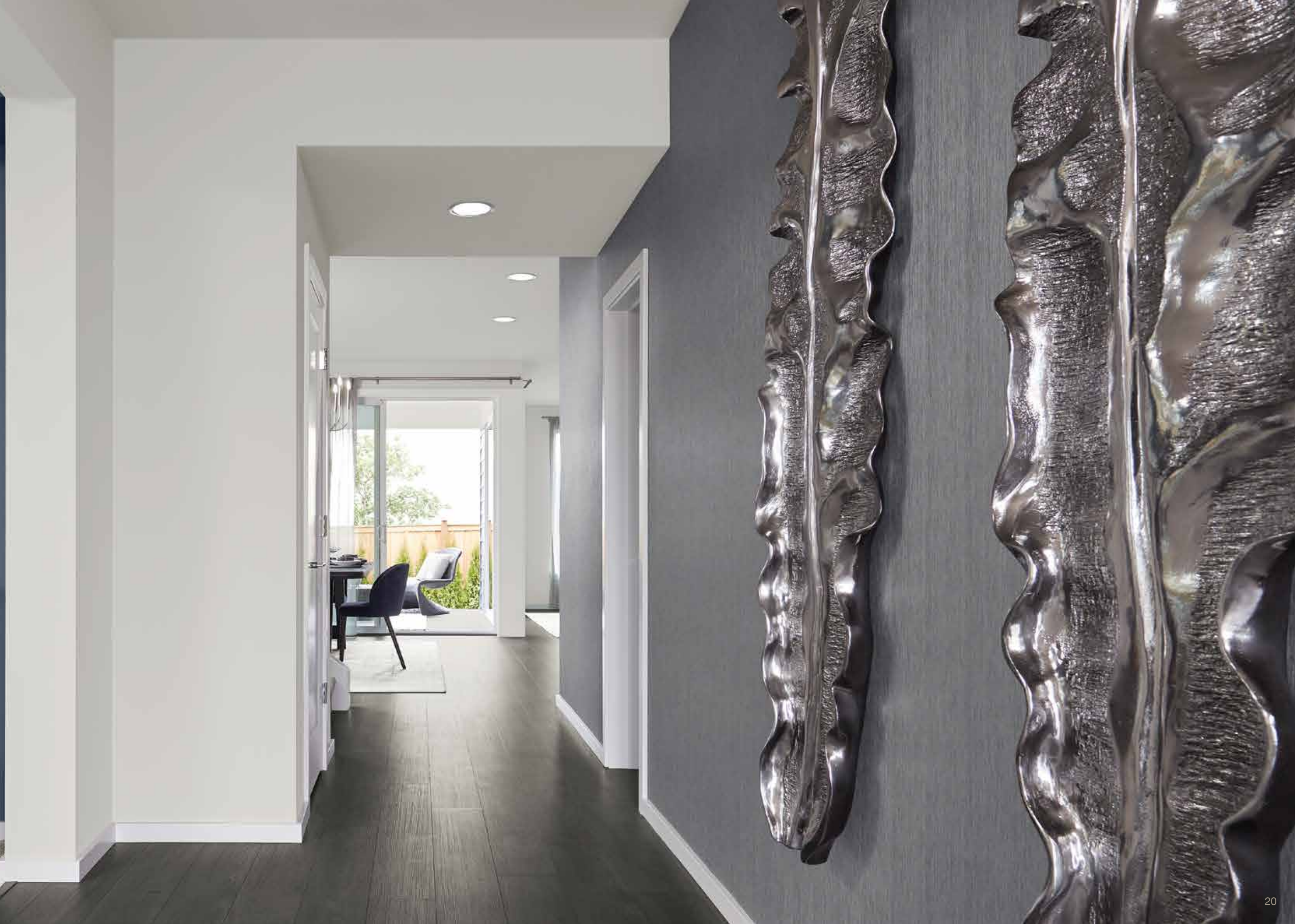
To learn more about MainVue Homes, visit:
MAINVUEHOMES.COM



MAINVUE HOMES

Gourmet Kitchens







MAINVUE DIFFERENCE

Reliability, History, Style and Fresh Approach

Luxury Inclusions are Our Standard

With the most sought-after luxury finishes included as standard in every home, MainVue's homebuying process is effortless and stress-free.

The World of Model Homes®

Experience the latest in MainVue's design, luxury living trends and lifestyle amenities while exploring an array of 13 impressive models at the World of Model Homes on display in Kent.

Dynamic Facade Options

Our full range of facade options are timeless and distinct, offering varied choices of brick, ledgerstone, or tile.

The Best in Customer Care

We are committed to providing the highest level of personalized customer care through our own dedicated service team, ready to respond to homebuyers.

Global Home Builder

With a rich heritage as deep as its world-wide reach, MainVue Homes has crafted ways to give its customers maximum value on several continents - from Japan and Australia to the United States. Our international partnerships have earned global respect and we have become admired leaders in each community we serve.

Designer Features in Every Home

Every MainVue home comes flush with the best in designer features and amenities.

The Best Communities in the Best Locations

Set in top-rated school districts, and surrounded by family-friendly amenities, our premiere locations are now found throughout the Puget Sound.

Professional Color Scheme Palettes

Hand-curated by designers, our contemporary color schemes are perfectly balanced, ensuring timeless and uncomplicated selections to complement every homeowner's personal style.

Certified 10-Year Warranty

MainVue Homes' comprehensive 10-year Home Builders Limited Warranty is our commitment to customers' peace-of-mind.

A Long History of Building Experience

For more than 42 years, MainVue Homes has been trusted for our professional building experience and global partnerships. We've set the highest benchmarks for our building and design influences - a practice that has earned the utmost respect from our customers and our partners.

Innovation and Contemporary Style

Ingenious floor plans with clean, modern designs enhance even the finest lifestyles.

Luxury Made Easy

Discover how our decadent luxury inclusions – like equally stylish finishes in more expensive custom homes – are included as standard with every MainVue home.

Whole Home Efficiency

From the air you breathe to the comfort you feel, our thoughtful energy efficient features, appliances, materials and finishes bring "green" to more than just your wallet.

Over \$30 Million in Worldwide Donations

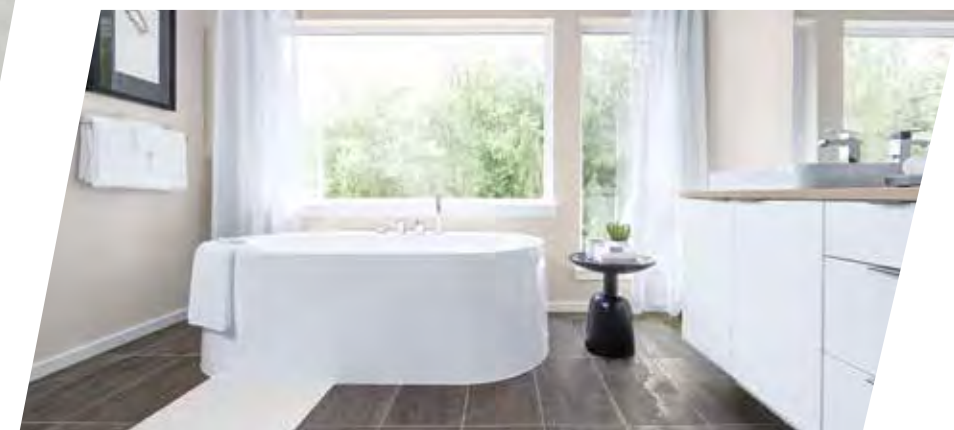
Our proven philanthropic commitment, both globally and locally, is the core of who we are.

International Influence

MainVue Homes takes pride in the strong international influences made possible by being part of the highly regarded Henley Properties Group Australia and its partnership with Sumitomo Forestry Group Japan. This relationship erases geographic boundaries to influence the results of MainVue Homes, bringing the latest in international home design, marketing, expertise and exposure.

MAINVUE HOMES

Indulge in Pure Perfection





MAINVUE WAY

Our Pledge and Our Principles

Some call it our ethos. But really, it's less about us and more about you - the people we build for, the communities you live in, and the environment we respect.

It's the MainVue Way.

You put your trust in MainVue Homes for the greatest investment you will ever make in life: your family and your home. That's why we want you to share what drives us and what inspires us to earn and maintain this trust. It's our spirit, our philosophy and our attitude.

Giving, Growing and Re-Energizing. Each of these principles drive us - day-to-day and for the future - to be the best Washington neighbor and the best global steward that MainVue Homes can be.



A GIVING TRADITION

A Good Neighbor Globally and Locally

GLOBALLY

MainVue Homes, part of Henley Properties Group and partner of the Sumitomo Forestry Group, is proud to be an integral contributor to local and worldwide organizations committed to supporting – and giving back to - our communities. It's who we are.

We also live and work alongside deserving people in our communities. That's why you will see us giving to major children's hospital and cancer-fighting initiatives.

It started more than 30 years ago. Since then, our focus has been resolute: building a better future. Since then, the impact has grown to more than \$30 million in donations.

Globally, this began in 1993 when Henley Properties created The Charity House for the Group Good Friday Appeal. Tradespeople, suppliers and Henley staff volunteer their time, services and product for this annual campaign while building a to-be-auctioned house. Auctioned proceeds from each gorgeous home are dedicated to groundbreaking cancer research and pediatric patient care at Royal Children's Hospital in Melbourne, Australia.

Since joining this annual Australian campaign, Henley has successfully auctioned 42 homes, raising more than \$16.25 million for the Group Good Friday Appeal's Charity House.

Primed by that success, MainVue Homes launched its own Charity House for Seattle Children's Hospital in 2017. MainVue teamed with Tehaleh by Newland Communities and the pair donated 100 percent of purchase proceeds from the sale of a brand-new home on a stunning Pierce County lot at Tehaleh in Bonney Lake.

This campaign has now successfully raised more than \$1.5 million for Seattle Children's Research Institute – an arm of the Strong Against Cancer national initiative.

It's part of the reason why Seattle Children's was able to create one of the world's leading open T-cell immunotherapy clinical trials for children and young adults in the world.

MainVue's gift doesn't stop here. It also benefits Seattle Children's Research Discovery Fund. The work that propels breakthrough research while identifying new treatments is a direct reflection of our

resolute focus: building a better future.

Day-by-day and long-term, our philanthropic commitment is about opportunity. MainVue supports opportunities that give people a chance in life. We also believe in the unlimited potential that can be achieved when individuals band together toward a vision of change.

LOCALLY

Equally important, through our solid growing connections in Seattle, MainVue and Henley are proud to be associated with other dedicated groups - the real hard-working people who share our mission.

At MainVue, giving time – tackling local hands-on projects – is vital to us. It's why we enthusiastically embrace “MainVue Day” – an annual all-day volunteer campaign. It allows us to share our success with grassroots programs, from Children's Therapy Center to Vision House in the greater Seattle area. Behind the scenes and out in front, MainVue believes giving is a way we can share our success globally – and in the local places where we live and work alongside our homebuyers.

RESPECTFUL AND RESPONSIBLE

Growing Back Our Forests and Building Responsibly

GROWING

At MainVue and Henley, we know that building homes takes both vision - and retrospection.

We have learned this from our recent successes as well as the experiences drawn from a rich 320-year heritage - something our partners call the “Sumitomo Spirit.” It has taught us that balance and harmony with the earth and its resources are more important now than ever before.

At its core, The Sumitomo Forestry Group reveres timber as a renewable, healthy, and environmentally friendly natural resource. Since its founding, the group is committed to practice business with a thoughtful balance of the environment and the economy we share – while contributing to a sustainable society for all.

This begins at its home in Japan, where Sumitomo Forestry promotes “Green Smart.” This “Green Smart” housing development concept fuses Sumitomo's expertise in the “unique characteristics of wood” and “blessings of nature.” Then it binds that with its focus

on reducing energy consumption through thermal insulation improvements and “smart energy” using equipment to generate and store energy. By boosting home energy efficiency in this way, the company seeks to reduce CO2 emissions.

The result contributes to regional revitalization by providing local employment opportunities as well as a stable source of income from the sale of timber. It's a long-term commitment - and it's just one example of how Sumitomo values the importance of harnessing “the power of the forests” for a better future for all.

RE-ENERGIZING

Energy and efficiency. At MainVue, they are one in the same.

Why? Because it's important to you. In fact, when you buy a MainVue home, it features all our most responsible, reliable, cost-effective energy efficiency systems. And, oh yeah: it comes with all the finest comforts, too.

Think of that as a Win/Win/Win/Win.

WHOLE HOME ENERGY EFFICIENCY

Homebuyers deserve it. MainVue assures it. Mirroring the innovative style that has long defined its local and worldwide commitment to energy efficiency, MainVue Homes takes this responsibility to a whole new level.

With a series of healthy, cost-effective and whole home comfort energy features, we want our MainVue homebuyers to understand exactly what our pledge means in the greater Puget Sound area. Our commitment to this gives us pride and our homebuyers confidence.

How do we do it? MainVue Homes gets down to business. Our focus: a “whole home” approach designed to balance savings, comfort and improved air quality – all without sacrificing exceptional design. For MainVue, true energy efficiency is about achieving the realities of efficient, functional, affordable and exceptionally beautiful living.

MainVue is tireless in our thorough inspections and rigorous testing. Taken separately and collectively, we want every one of our homes in Washington state to meet or exceed MainVue's high quality and efficiency standards.



A Worldwide Giving Tradition



Respectful of Our Environment





MAINVUE HOMES

Unparalleled
Luxury





WORLD OF MODEL HOMES®

13 Model Homes in One Location

Don't just imagine luxury, experience it in person at MainVue's signature World of Model Homes.

MainVue Homes invites you to visualize homes so innovative, so well designed and so beautiful that they will set the standard in architecture and interior design around the world for decades to come.

More importantly, they will exceed your very own discerning standards for luxury and value.

So why merely imagine the finest of homes when you can discover them in person? With MainVue's World of Model Homes, dreams become reality in communities rich with heritage and flush with amenities that beckon you to explore the fullest range of tour-ready models available in one single MainVue location.

Each model home features a full range of luxury inclusions that come standard in every MainVue home.

The enchantment begins with MainVue's signature styles found throughout the varied grand display homes here. By the time you see the latest colors, touch the enviable luxury inclusions and immerse yourself in the innovative designs in these model homes, you will feel as if you belong here.

Power up sophisticated Kitchen appliances and plan your next holiday. Stroll out to the Signature Outdoor Room where the fresh air will help you savor your morning coffee. Stride up the grand staircase or through the main floor to find your sanctuary in your posh Grand Suite.

These MainVue homes - with their unparalleled spectrum of choices - are available in a wide selection of highly sought-after neighborhoods, all for you.

VISIT THE WORLD OF MODEL HOMES:

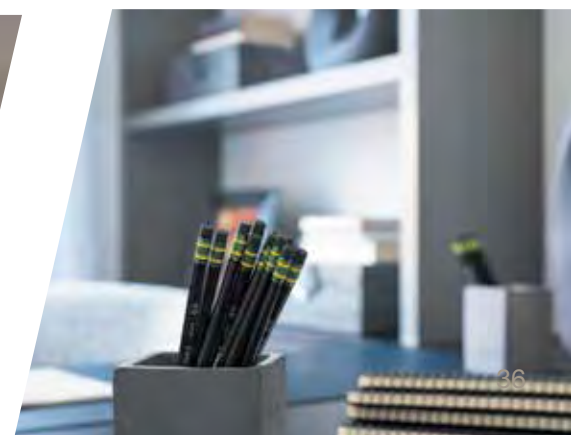
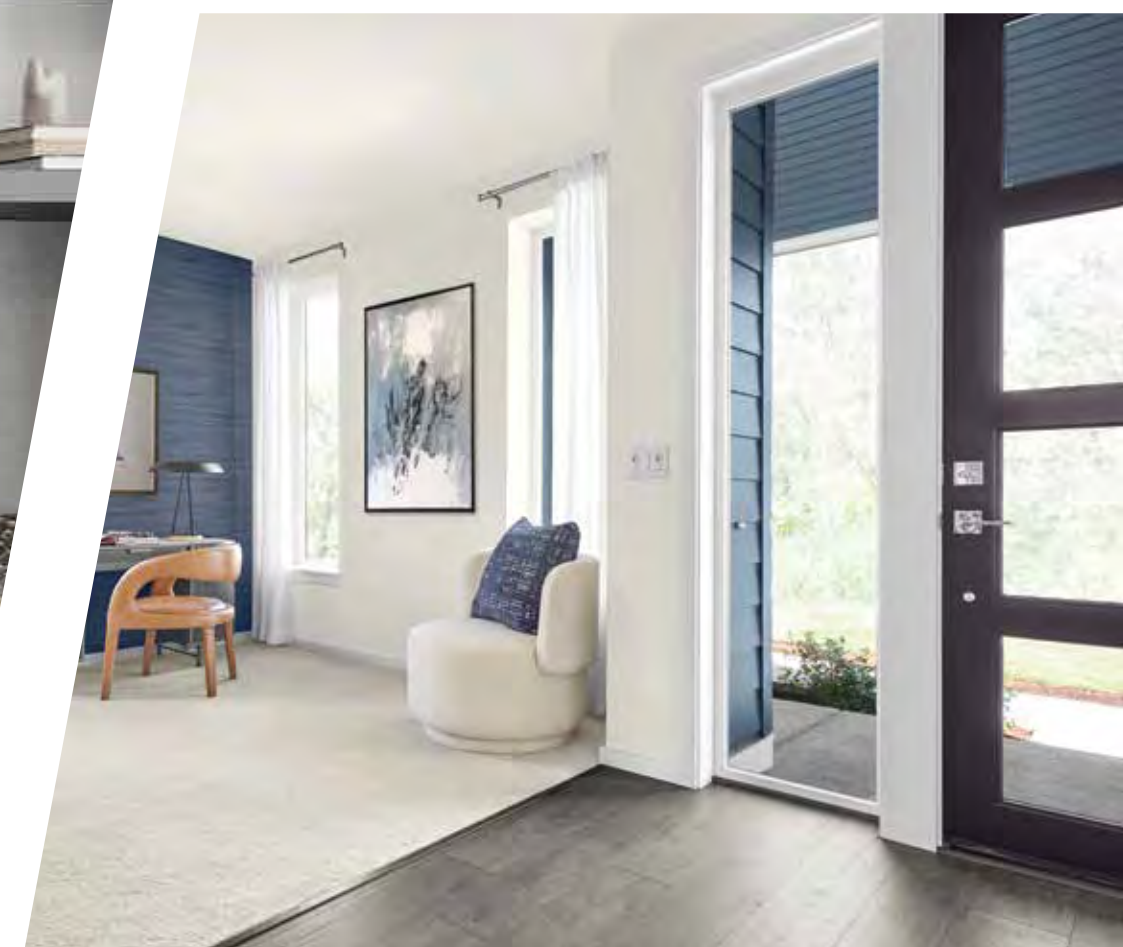
10833 SE 216th St, Kent 98031

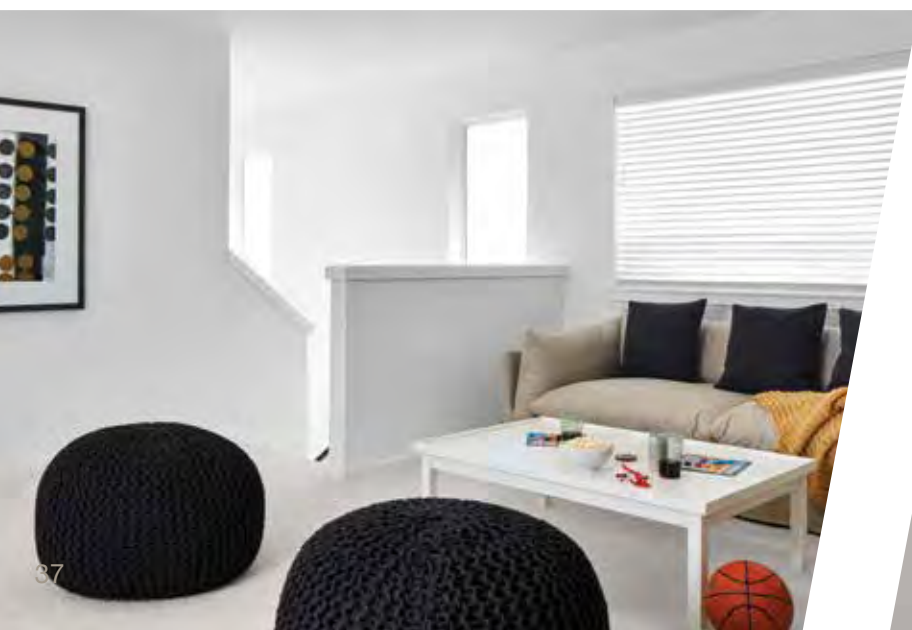
Open Daily



MAINVUE HOMES

Flexible Living Spaces







OUR COMMUNITIES

The Best Communities, in the Best Locations

MainVue Homes brings you the very best communities in the very best locations throughout the Puget Sound region.

MainVue Homes communities offer you the best in new homes and neighborhood design with a quality lifestyle to match.

With this phenomenal blend of community lifestyles across the greater Seattle area, you are bound to find your perfect place in a thoughtfully designed setting.

Each exclusive community offers something unique and special. Find MainVue homes in settings that promote healthy, active and engagingly social lifestyles through neighborhoods and parks. Discover us near convenient connections to school, work, shopping, healthcare and leisure.

To discover additional details about each community and homes that are selling right now as well as those coming soon, please speak with a MainVue Homes Consultant.

Explore all current MainVue communities at [MAINVUEHOMES.COM/COMMUNITIES](https://mainvuehomes.com/communities)





MAINVUE HOMES

Loaded
with
Luxury





MAINVUE INCLUSIONS

Luxury Inclusions are Our Standard

With MainVue Homes, the difference is everywhere. It often begins with a breath-taking sense of satisfaction in buying a new home that is already flush with a litany of luxury inclusions – at no extra cost.

Much of the credit goes to our team of professional designers, who have selected dazzling hand-selected finishes, fixtures and features that complement the nuances of each space in every home. These luxury inclusions are intrinsic to MainVue Homes, and almost impossible to find elsewhere.

With MainVue Homes, there's always something more, including more value in having countless luxury amenities included as standard.

Clearly, it's more than innovative home plans and artfully crafted facades. It's about finishing touches

that give you a simple thrill...over and over again. It's the form and function of Grohe designer faucets. It's the sleek hardware and soft-close concealed door hinges on stunning frameless cabinets. It's the oh-so-heavenly spray of an adaptable hand-held showerhead or the soft splash in the stand-alone soaking tub in the Grand Bathroom after a rough day. And, it's the masterful menu created with energy efficient Stainless Steel appliances then served atop a super-sized Kitchen island.

Why wait? From Kitchens to Baths, and Outdoor Living features to intimate indoor spaces, explore the possibilities of what your future can be - or what it will be - with MainVue Homes.

Come discover for yourself how the difference is truly everywhere.

For a complete list of Luxury Inclusions visit:
[MAINVUEHOMES.COM/LUXURY INCLUSIONS](https://mainvuehomes.com/luxury-inclusions)





MAINVUE LUXURY
INCLUSIONS

GOURMET KITCHENS

*When an artful place to
cook enhances your
existing good taste.*

*Inclusions subject to change. Refrigerator not included



MAINVUE KITCHENS

Culinary Perfection





MAINVUE LUXURY
INCLUSIONS

LUXURIOUS BATHS

*Double down on the bubbles.
Bath styling pays off in
complete splendor.*

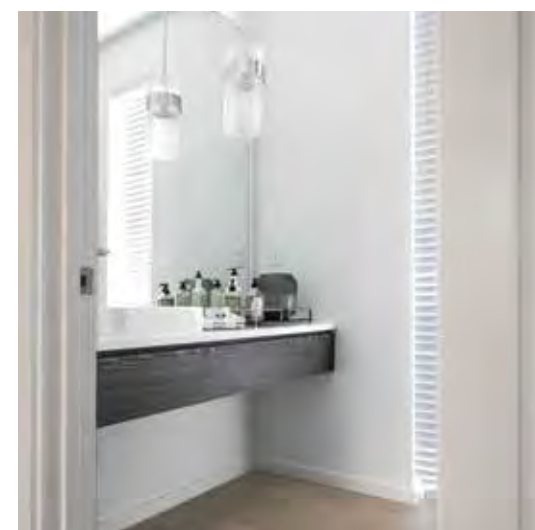
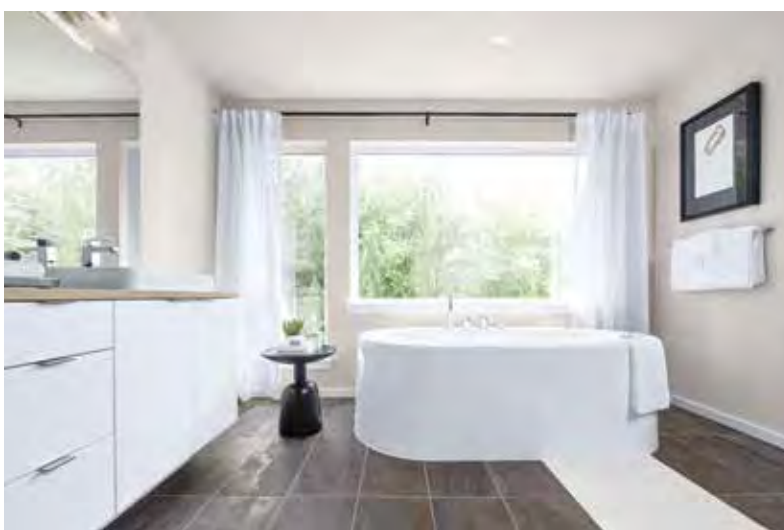


*Inclusions subject to change.



MAINVUE BATHROOMS

Opulent Baths





MAINVUE LUXURY
INCLUSIONS

INCLUSIONS THROUGHOUT

*Forward. Backward. And
every direction in between.
Fine living is a 360-degree
commitment.*



*Inclusions subject to change.



MAINVUE INCLUSIONS

Perfection Everywhere

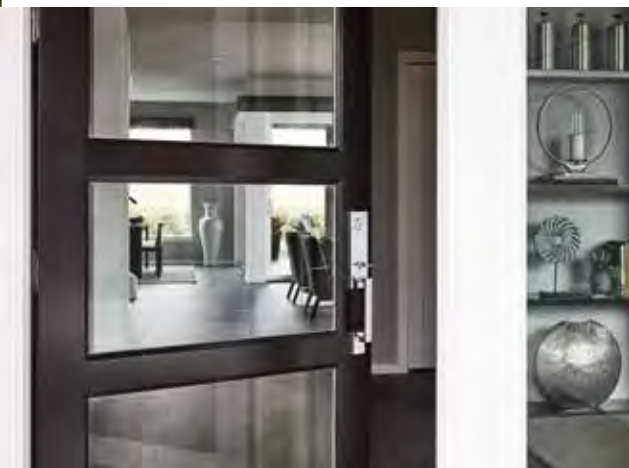




MAINVUE LUXURY
INCLUSIONS

DESIGNER FACADES

*Brave. Bold. Brilliant. Your
MainVue home finishes look
good on you.*



*Inclusions subject to change.



MAINVUE LUXURY
INCLUSIONS

SIGNATURE OUTDOOR ROOMS

*Capturing quintessential
indoor/outdoor vibes. It's
where you have always
belonged.*



*Inclusions subject to change. Outdoor Room fireplace not included





MAINVUE HOMES
Live in
Luxury





MAINVUE COLLECTION

A World of Home Designs

From each angle and every perspective, MainVue is raising the bar on home designs and living.

Discover how rewarding your lifestyle can truly be with MainVue Homes – a collection of voluminous new home designs showcasing an extensive variety of living choices and stylish facades. Each is flush with luxury inclusions, unmatched by others. It's just one of many ways we're redefining luxury.

Select from our modern facades series, each defined by its clean lines and varied attractive finish details: brick, ledgerstone, or tile.

Subtle and dramatic luxury inclusions enhance space inside, as well. MainVue pumps up the volume in enviable open-flow Great Room designs

that integrate with even more space in expansive Kitchens and Dining rooms surrounded by natural light. Luxury and flexibility continue streaming in leisure rooms and – as always – MainVue's Signature Outdoor Rooms.

Our outstanding selection of exceptional homes ranges from 2,372 to 4,417 square feet. Just as important: MainVue's selections can be found in communities throughout the Puget Sound area, providing even more choice to homebuyers.

Take a moment to browse the designer details throughout our vast collection to select a home that complements your lifestyle.

For a complete list of our latest home designs visit us online at: **[MAINVUEHOMES.COM/HOME DESIGNS](https://mainvuehomes.com/home-designs)**





The MainVue

HOME DESIGN COLLECTION

	SQUARE FEET*	OUTDOOR ROOM SF	TOTAL BEDROOMS	GRAND SUITE UP/DOWN	BATHS	GARAGE	HOME OFFICE/STUDY	LEISURE ROOM	MULTI-PURPOSE ROOM	RECREATION ROOM	BUTLER'S PANTRY	GRAND BUTLER'S PANTRY	GARAGE STORAGE	PAGE
Gardenia	2,372	135	3	Up	2.5	2		•					•	69-72
Clover	2,622	212	3	Down	2.5	2						•	•	73-76
Abelia	2,727	130	4	Up	2.5	2	•	•						77-80
Iris	2,837	143	4	Up	2.5	2		•	•					81-84
Orchid	3,111	189	4	Up	2.5	2		•	•					85-88
Juniper	3,139	138	4	Up	2.5	2	•	•	•		•		•	89-92
Zinnia	3,290	152	4	Down	2.5	2		•	•		•			93-96
Cypress	3,295	180	4	Up	2.5	2	•	•			•		•	97-100
Birch	3,319	137	4	Up	2.5	2		•	•			•		101-104
Verbena	3,561	159	4	Up	2.5	2	•	•	•		•			105-108
Fuchsia	3,582	150	4	Up	2.5	2	•	•	•			•		109-112
Rosa Duet	3,677	166	5	Up	3.5	2		•				•	•	113-116
Dahlia	3,781	212	4	Up	2.5	2	•	•	•			•		117-120
Briar	4,055	197	4	Up	3.5	2	•	•	•			•		121-124
Ivy	4,109	211	4	Up	3.5	3	•	•	•			•		125-128
Lotus	4,239	223	4	Up	4.5	2	•	•	•			•	•	129-132
Azalea	4,417	144	5	Up	3.5	2	•	•	•	•		•		133-136

*Total square footages include outdoor room. Plans, square footage and house availability may vary by community and is subject to change.



THE GARDENIA
Sensationally
Satisfying



GARDENIA

2,372 Square Feet, 3 Bedrooms, 2.5 Bathrooms, 2 Car Garage, Signature Outdoor Room, Garage Storage, Leisure Room

On Display at the World of Model Homes

Sleeping children. Laughing dinner guests. High-fiving big-game viewers. Even life's most satisfying moments are immensely more gratifying when framed by the infinite luxurious inclusions crafted into The Gardenia.

There's no need to cap guest lists here. When melded with multiple entertainment zones, hospitality features can turn an event as spontaneous as a small barbecue into a block party that neighbors will never forget.

Pull the summer drink cooler from the bonus storage in the garage. After the cooler is filled with ice from the Kitchen, arrange it on the Signature Outdoor Room's foot-traffic-friendly composite decking. Place bowls - stored behind your Kitchen's gorgeous European cabinets - onto your showcase super-sized island, gleaming with thick 3cm Quartz.

Visitors arriving at the modern columned porch façade are greeted by the brilliant sidelite window and a wide Foyer that reaches to the

upstairs Leisure Room – but the real guest magnet begins the moment you open the Walk-In Pantry's frosted glass door for chips, salsa and snacks to bring to the party mix in your Signature Outdoor Room. Here, take time to bask in the fun as it spills naturally into the rear yard, where native easy-care landscaping is a perfect backdrop.

As guests spill back in, two floor-to-ceiling sliding glass walls open into the dynamic Dining Room and contemporary Great Room. It's a design that makes hospitality feel effortless and savvy when wet weather months bring entertainment indoors. Mingle with guests gathering around The Gardenia's focal-point: the 36" gas fireplace with Stainless Steel surround and your game-day big-screen. For holidays, every dish is delish at the sophisticated pivot-point Kitchen.

Need entertainment spillover room or space for younger guests? Find it in the Leisure Room at the peak of the staircase. It's open enough for preschoolers to burn off extra energy – and then drift into pre-

cious slumber while adults perform convenient check-ins from their main-level fun. Prefer a third Secondary Bedroom instead of the Leisure Room? Ask MainVue about modifying this space.

All the best hosts know it's important to spoil yourself occasionally, too. That's where the Grand Suite's urbane amenities await in the Grand Bathroom: brilliant Quartz-finished counters with Grohe fixtures and dual-sink vanity; designer free-standing tub; frameless walk-in shower, and expansive Dressing Room. If you prefer, MainVue can add a door to separate the Bath from the Bedroom.

One by one – or in a groundswell – the myriad of joy-filled moments that shift from satisfying into sensational become a natural part of living in The Gardenia.

Great Room



Kitchen



Grand Bathroom



Leisure Room



Kitchen, Dining



Grand Suite, Grand Bathroom

Designer Features

Wide Foyer entry with side-lite window

Walk-in Pantry off Gourmet Kitchen with abundant crisp white solid shelving

Perfectly placed Leisure Room on the upper floor for an extra entertainment space

Corner situated Signature Outdoor Room with direct access to Dining and Great Room via wall-height sliding glass doors

Luxurious Grand Suite with designer free-standing tub, frameless walk-in shower, and expansive Dressing Room

Supersized, entertainment-ready Chef's Island adorned in extra-thick 3cm Quartz countertop, finished by flat polished edges

Designer chrome Grohe faucet over single-bowl Stainless Steel sink

Home Vitals

SQUARE FOOTAGE:	
Main Floor	964
Upper Floor	1,273
Outdoor Room	135
Total Square Feet	2,372
Garage	446

SIGNATURE SPACES:
Signature Outdoor Room
Garage Storage
Leisure Room

AVAILABLE OPTIONS:
Bedroom 4 in lieu of Leisure Room



*The finished square footage areas provided are calculated based on ANSI Z765-2013 standards as commissioned by National Association of Home Builders (NAHB). Finished square footage calculations were made based on plan dimensions only and may vary from the finished square footage of the house as built. Finished square footages vary based on elevation styles and plan options. Total square footage used in marketing includes the outdoor room. Photography is for illustrative purposes and should be used as a guide.



CLOVER

2,622 Square Feet, 3 Bedrooms, 2.5 Bathrooms, 2 Car Garage, Signature Outdoor Room, Grand Butler's Pantry, Garage Storage

With The Clover, old rules are out. As volume swells with soaring ceilings, rooms expand with ultimate flexibility and modern style redefines luxury, this design completely changes the approach for dynamic rambler design.

It's not just the bold use of ceilings that infuse a branded sense of grandeur to single-level living here. It's also the carefully calculated layout of space.

Just off the Foyer, two rooms diverge from a Vestibule. Use them as Secondary Bedrooms with the shared bath in between – or ask MainVue Homes how it can be furnished as a Home Office, enclosed into a Multi-Purpose Room or both.

Back in the main hallway, impressive timber-look flooring delves deeper into The Clover's defining moment: the threshold into the spectacularly open-flowing living space.

Admire the elevated and refined ceilings in the Great Room and

dynamic Dining Room. Ballast-like angles span to the gourmet Kitchen while anchor-like window walls slide open to the year-round Signature Outdoor Room. Guests can't resist mingling on its composite decking just steps from the rear yard's artful landscaping. For evening gatherings, choose the subtle recessed can lights - or dim these fixtures to take in night sky beauty.

Equally brilliant: Quartz, sparkling on Kitchen countertops, the super-sized island and savvy food-prep surfaces in the Grand Butler's Pantry. Elegant European cabinets in both spaces assure enough storage for large party-ready servicewear. Find even more storage through the Laundry/Utility Room - a savvy walk-through between the Foyer and the garage with bonus storage for oversized toys, seasonal decor and more.

At the far rear corner, the all-inclusive Grand Suite prioritizes personal pampering with extra-height ceil-

ings in the sleeping quarters and an impressive Dressing Room set behind French doors. The Bath Suite's exquisite porcelain tile flooring surrounds the designer free-standing tub, frameless walk-in shower and Quartz-capped dual-sink vanity.

By redefining the rules for luxurious rambler living, infusing volume and flexibility, and incorporating all its modern essentials, The Clover instantly becomes a game changer.

THE CLOVER
Game
Changer



Great Room



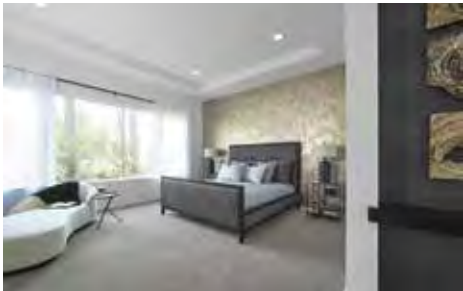
Kitchen, Dining, Great Room



Grand Bathroom



Great Room



Grand Suite



Outdoor Room



Designer Features

Spacious Foyer entry with extended height ceilings and unique side-lite window

Grand Butler's Pantry with 3cm Quartz counters and ample cabinets for storage

Utility Room with dual access from Foyer and Garage

Luxurious Grand Suite with expansive Dressing Room, designer free-standing tub, frameless walk-in shower and dual vanities capped in Quartz

Signature Outdoor Room with direct access to Dining and Great Room

Extended height ceilings in Great Room and Dining Room for added height and volume

Home Vitals

SQUARE FOOTAGE:	
Main Floor	2,410
Outdoor Room	212
Total Square Feet	2,622
Garage	464

SIGNATURE SPACES:

Signature Outdoor Room

Grand Butler's Pantry

Garage Storage

AVAILABLE OPTIONS:

Multi-Purpose Room in lieu of Bedroom 2

Jack and Jill Bath in lieu of Hall Bath

Home Office in lieu of Bedroom 3

*The finished square footage areas provided are calculated based on ANSI Z765-2013 standards as commissioned by National Association of Home Builders (NAHB). Finished square footage calculations were made based on plan dimensions only and may vary from the finished square footage of the house as built. Finished square footages vary based on elevation styles and plan options. Total square footage used in marketing includes the outdoor room. Photography is for illustrative purposes and should be used as a guide.



ABELIA

2,727 Square Feet, 4 Bedrooms, 2.5 Bathrooms, 2 Car Garage, Signature Outdoor Room, Home Office, Leisure Room

On Display at the World of Model Homes

Why leave it to the imagination? In The Abelia, let reality take hold from the very beginning and prove that this visionary design is undeniably meant for you.

For many, it begins with an uncommon MainVue twist on a top feature: the open concept Home Office. Unlike other designs where this invaluable room is arranged off the Foyer and separate from the primary living space, here it's set opposite the gourmet Kitchen space, creating an entirely new personality. Invite MainVue to fully enclose it or keep it open for the visual sweep toward the Kitchen's elegant Quartz-capped supersized service island, modern designer tile splashback and dashing window beyond.

Windows and doors blend artistry and functionality in other dreamy ways nearby, as well. Sidelight windows in the winsome Foyer distinguish the wood and frosted glass entry door and introduce the home's wide-plank timber-look flooring. An oversized window in

the urbane Dining Room reflects its luxurious chandelier, while the Great Room's grand twin windows seem to double the warmth of its 36" fireplace. Natural light further transcends expectations via two sliding walls of glass framing the attractive Signature Outdoor Room – ready year-round for daydreaming or full-blown napping. Even the highly organized walk-in Pantry offers a dashing window splashback.

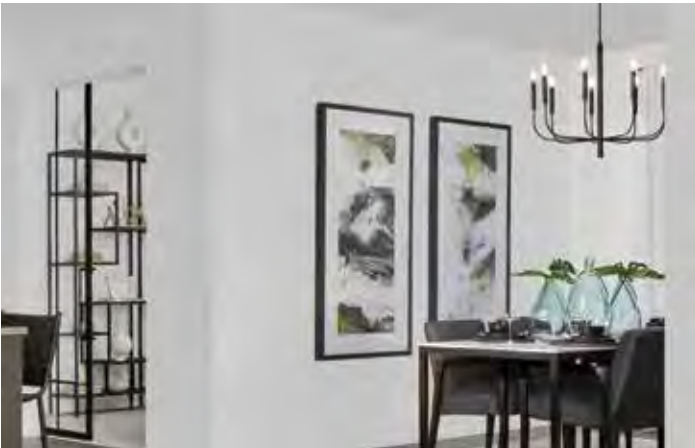
Abundant space continues upstairs direct from the foyer into the open-flow Leisure Room. One minute, it's a slippers-and-pajamas snug-gle-spot for late-night movies; the next, it's an active toys and games zone for kids or adults. It reserves three secondary Bedrooms for quiet when it's time to drift off to sleep. One Bedroom is thoughtfully located near the Grand Suite entrance. A nursery, perhaps?

Sleeping in the Grand Suite at the rear of this level, meanwhile, is especially luxurious. This suite becomes your exclusive pass to pampering. Select your robe

from the Dressing Room before making your way into the Grand Bathroom sanctuary: the soothing sound of water filling your designer free-standing tub; the allure of its large porcelain tile flooring leading to the frameless walk-in shower, and the dazzle of Quartz counters enveloping the two vessel sinks on the broad vanity.

Vividly drawn. Sophisticatedly styled. From MainVue's imagination to you, The Abelia invites you to have it all.

THE ABELIA
Living the
Dream



Great Room



Kitchen



Foyer



Great Room, Kitchen



Leisure Room



Great Room

Designer Features

Custom wood and glass front door leads to wide Foyer entry, accented by state-of-the-art wide plank timber-look flooring

Home Office located off Gourmet Kitchen

Gourmet Kitchen featuring unique window splashback for added light and accent, plus additional Walk-In Pantry

Luxurious Grand Suite with designer free-standing tub, frameless walk-in shower, and dual vanities capped in Quartz

Signature Outdoor Room with direct access to Dining and Great Room via wall-height sliding glass doors

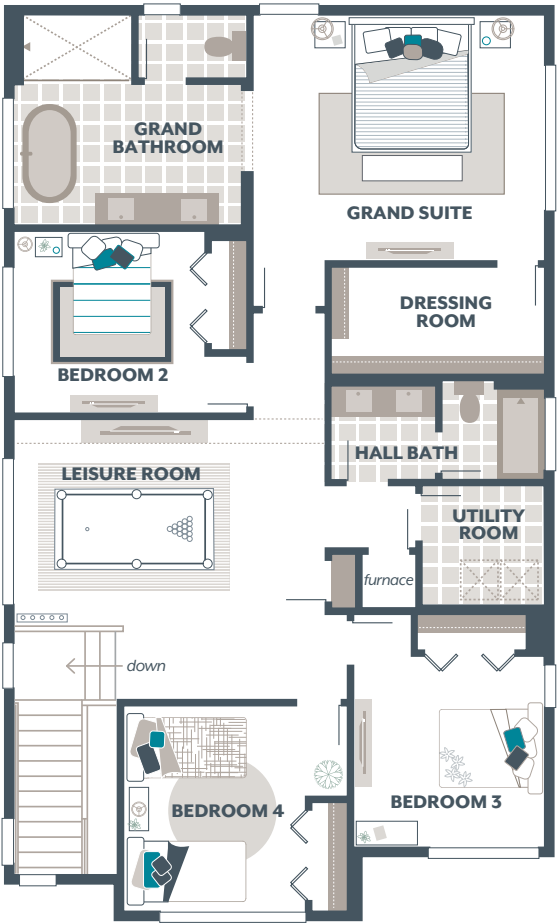
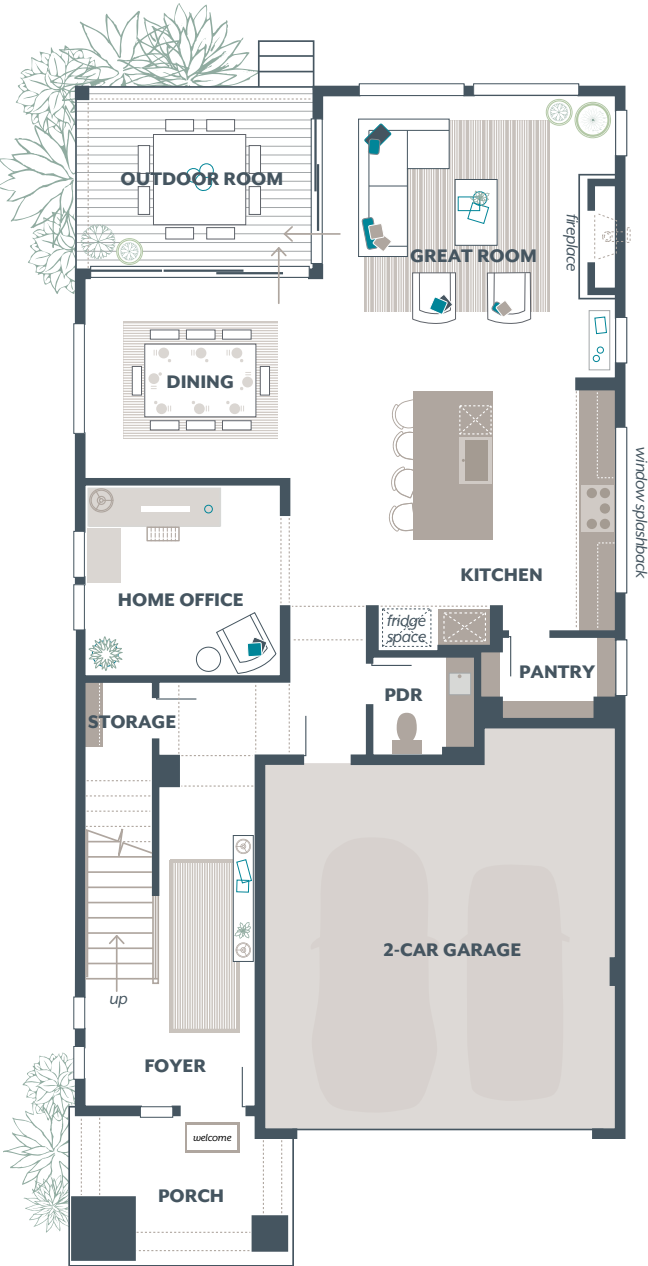
Perfectly placed Leisure Room on the upper floor for an extra entertainment space

Home Vitals

SQUARE FOOTAGE:	
Main Floor	1,164
Upper Floor	1,433
Outdoor Room	130
Total Square Feet	2,727
Garage	419

SIGNATURE SPACES:
Signature Outdoor Room
Home Office
Leisure Room

AVAILABLE OPTIONS:
¾ Bath in lieu of Powder Room



*The finished square footage areas provided are calculated based on ANSI Z765-2013 standards as commissioned by National Association of Home Builders (NAHB). Finished square footage calculations were made based on plan dimensions only and may vary from the finished square footage of the house as built. Finished square footages vary based on elevation styles and plan options. Total square footage used in marketing includes the outdoor room. Photography is for illustrative purposes and should be used as a guide.



IRIS

2,837 Square Feet, 4 Bedrooms, 2.5 Bathrooms, 2 Car Garage, Signature Outdoor Room, Multi-Purpose Room, Leisure Room

On Display at the World of Model Homes

When first discovering the luxury in The Iris, there is absolutely no need to rush. The lifestyle balance comes to you. Sophisticated style begins the very moment you approach this thoughtfully crafted home. Optimized open room designs bond with exceptional outdoor features for an extra kick.

Feel this vibe each time your front yard of professionally-selected native plants welcomes you toward the dynamic dual-columned porch. This home journey continues through the modern wood and frosted glass front door. Its long Foyer provides a protective separation between the entry and primary living areas, including the enticing corner Signature Outdoor Room with composite decking. This patio party paradise doubles as a quiet nap zone when it's needed most. When expanded via sliding window walls, this open space marries the

side-by-side Great Room and view-to-the-outdoors Dining Room highlighted by a stunning chandelier. Views of the engaging Kitchen – ideal for hosting a fabulous brunch any time of year - are equally stunning. Light pours through unique window splashback toward the supersized island and in the separate walk-in Pantry. This main living entertainment zone can be expanded into the Multi-Purpose Room (with an option to enclose).

Back in the Foyer, dark bronze staircase railing partners with familiar lines and angles before arriving in the versatile Leisure Room. For an option, turn this into a fourth Bedroom. Deeper on this level, the Grand Suite provides ultimate privacy behind its own entry door. Indulge in the expansive Dressing Room and muscle-relief deep-soak tub. A separate frameless shower with tile accents complements the

Quartz-crowned vanity with stylish twin vessel-style sinks with Chrome hardware.

Here, as throughout The Iris, you can take your time. Everything important comes to you.

THE IRIS
Fast-Track to
Luxury





Grand Bathroom

Grand Suite

Great Room, Kitchen, Dining

Leisure Room

Designer Features

Dynamic wood and frosted glass front entry door to Foyer with side-lite windows

Flexible main floor Multi-Purpose Room with plush, stain-resistant carpet

Unique Window Splashback in Gourmet Kitchen and Walk-In Pantry for added light and accent

Luxurious Grand Suite with designer free-standing tub, frameless walk-in shower, and expansive Dressing Room

Perfectly placed Leisure Room on the upper floor for an extra entertainment space

Signature Outdoor Room with direct access to Dining and Great Room

Home Vitals

SQUARE FOOTAGE:	
Main Floor	1,136
Upper Floor	1,558
Outdoor Room	143
Total Square Feet	2,837
Garage	413

SIGNATURE SPACES:
Signature Outdoor Room
Multi-Purpose Room
Leisure Room

AVAILABLE OPTIONS:
Bedroom 5 in lieu of Leisure Room



*The finished square footage areas provided are calculated based on ANSI Z765-2013 standards as commissioned by National Association of Home Builders (NAHB). Finished square footage calculations were made based on plan dimensions only and may vary from the finished square footage of the house as built. Finished square footages vary based on elevation styles and plan options. Total square footage used in marketing includes the outdoor room. Photography is for illustrative purposes and should be used as a guide.



ORCHID

3,111 Square Feet, 4 Bedrooms, 2.5 Bathrooms, 2 Car Garage, Signature Outdoor Room, Multi-Purpose Room, Leisure Room

On Display at the World of Model Homes

Equilibrium. Proportion. Harmony.

When everyday life may feel out of sorts, The Orchid reveals its calming counterbalance of luxury. A custom wood and frosted glass entry door with a chic sidelite window. Sophisticated wide-plank, timber-look flooring rolling across the Foyer. Before even entering this home, you're greeted by impeccable aesthetics.

Long and lean, the Foyer crafts angles for homeowners who value visual protection for spaces deeper in the home. Turn a corner at the Multi-Purpose Room's symmetry - space that can be shared by kids with crayons and parents with laptops. It's equally flexible when left open or private when (optionally) enclosed.

By the time the Great Room emerges from the corner-cut hallway, The

Orchid showcases even more ways it can perform. Fall into furniture arranged around the room's dynamic 36" Stainless Steel surround gas fireplace. Greet guests at the Kitchen's supersized Quartz-topped centerpiece island with chilled beverages from stunning Stainless Steel appliances. Serve after-school snacks from the Walk-In Pantry's crisp, white solid shelving. Nearby, the designer backsplash tile shines next to European frameless, soft-close cabinets while light pours through the window splashback.

After-hours, an on-trend chandelier bathes the adjacent Dining Room in light, reflecting from full-height sliding window walls to the Signature Outdoor Room - a haven generously scaled to maximize fresh-air living.

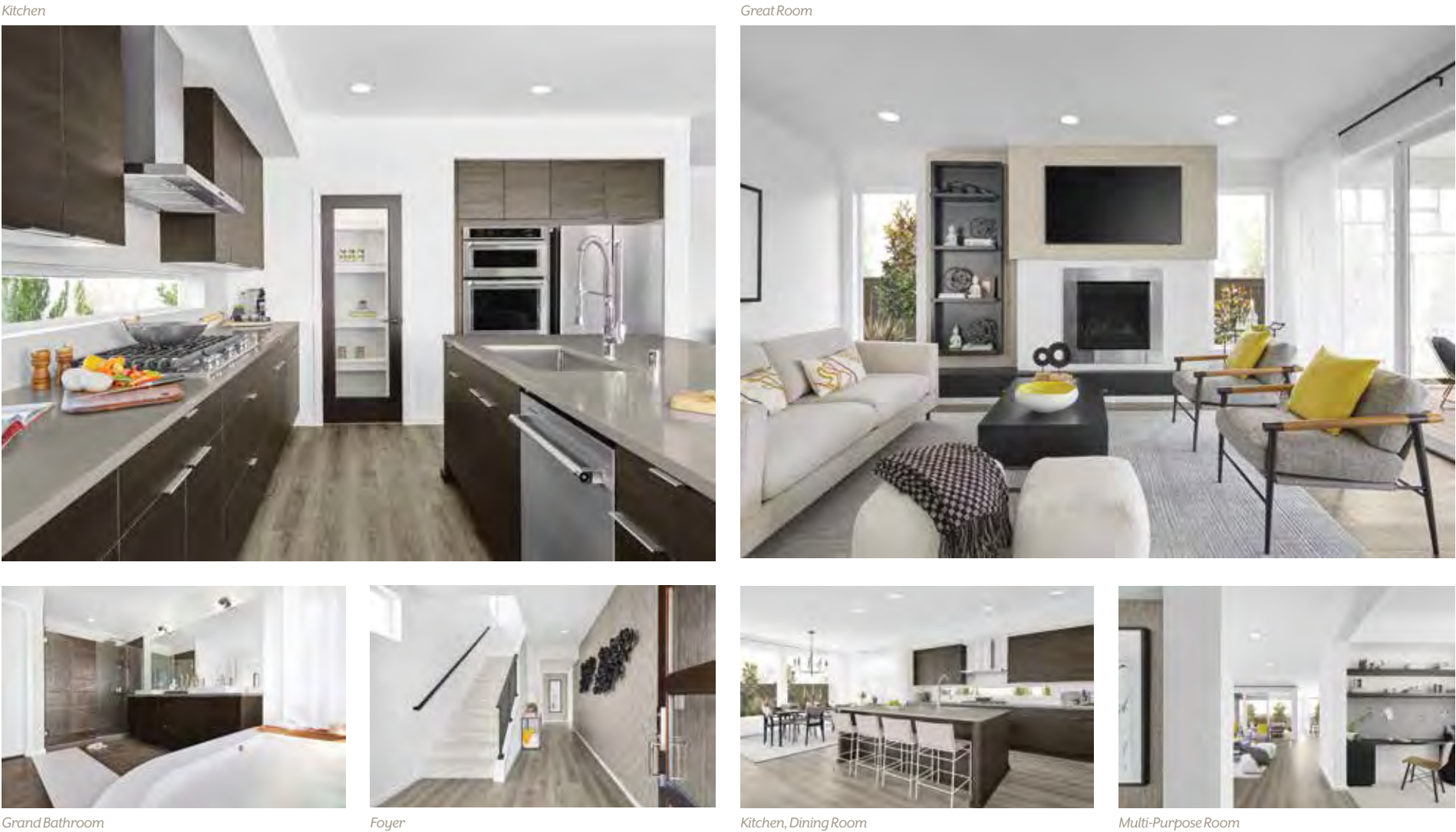
Upstairs, linger in the Leisure Room. Intentionally spacious, it can

host home workout equipment, arts-and-crafting stations or an entertainment zone - all at the same time. This conduit to three Secondary Bedrooms is also an ideal buffer for the Grand Suite with two Dressing Rooms. The decadent free-standing soaking tub, frameless walk-in shower, and posh twin vessel-sink basins framed by thick Quartz counters and accented by Grohe designer faucets assure that the start to each day is poised for well-being.

Scaled to perfection. Layered in luxury. It's clear that The Orchid is the balance your life deserves.

THE ORCHID
Just the Right
Balance





Designer Features

- Wide Foyer entry with side-lite window and state-of-the-art wide plank timber-look flooring

Flexible main floor Multi-Purpose Room with plush, stain-resistant carpet
- Gourmet Kitchen with supersized island capped in 3cm Quartz and unique window splashback

Spacious Walk-in Pantry off Gourmet Kitchen with abundant crisp white solid shelving
- Luxurious Grand Suite with designer free-standing tub, frameless walk-in shower, and dual Dressing Rooms

Perfectly placed Leisure Room on the upper floor for an extra entertainment space

Home Vitals

SQUARE FOOTAGE:	
Main Floor	1,238
Upper Floor	1,684
Outdoor Room	189
Total Square Feet	3,111
Garage	413

- SIGNATURE SPACES:

Signature Outdoor Room

Multi-Purpose Room

Leisure Room
- AVAILABLE OPTIONS:

Bedroom 5 in lieu of Leisure Room

¾ Bath in lieu of Powder Room

*The finished square footage areas provided are calculated based on ANSI Z765-2013 standards as commissioned by National Association of Home Builders (NAHB). Finished square footage calculations were made based on plan dimensions only and may vary from the finished square footage of the house as built. Finished square footages vary based on elevation styles and plan options. Total square footage used in marketing includes the outdoor room. Photography is for illustrative purposes and should be used as a guide.



JUNIPER

3,139 Square Feet, 4 Bedrooms, 2.5 Bathrooms, 2 Car Garage, Signature Outdoor Room, Home Office, Multi-Purpose Room, Butler's Pantry, Leisure Room, Garage Storage

On Display at the World of Model Homes

Make a big splash or play it easy-going. For any mood of the moment, The Juniper is ready.

Do your instincts call out party time? Throw sizzle and spice on the grill for weekend guests. Does your heart whisper something about snuggling under the stars? Take the hint. Both lead to the Signature Outdoor Room – the exterior soul of The Juniper. Two sets of sliding window walls connect this corner space to a sophisticated Great Room and the Dining Room, illuminated by its work-of-art chandelier.

All three rooms expand into a modern Kitchen with KitchenAid Stainless Steel appliances and European frameless cabinets. Entertaining set-up looks stress-free thanks to the Butler's Pantry, a discreet alcove with plenty of counter space and an artful window splashback. Your inside secret: this walk-through passage links to the garage with bonus storage for added convenience.

When life demands business, retreat to the professional privacy of the Home Office arranged off The Juniper's Foyer. It's next to the Multi-Purpose Room which ensures enough flexibility for party guests overflowing from the Great Room or whole-family full-pajama-mode weekends. Want even more versatility? Enclose these spaces – or blend them into a single overnight Guest Suite.

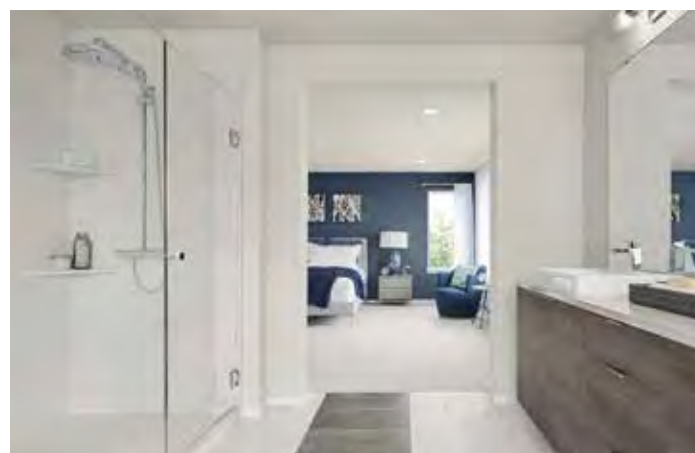
There are always more ways to spread out upstairs, too. Discover spaces scaled to children in three Secondary Bedrooms fanning out from the Leisure Room. Unfussy by design, the Leisure Room lives like you do with space for heart-pounding exercise, homework in progress and partially-folded laundry.

Completely separate? The relaxed Grand Suite's respite, filling the entire rear of the upper level. Flip from carpool duty to happy hour in either of two Dressing Rooms. Melt away

workday stress in the free-standing designer tub or tile-accented semi-frameless walk-in shower. Re-set under the sleek polished nickel-finish lighting above your dual-sink settings at the Quartz-capped vanity.

In The Juniper, no day goes by without responding to your ever-shifting moments in practicality – and luxury.

THE JUNIPER
Style Meets
Function



Great Room



Kitchen



Foyer



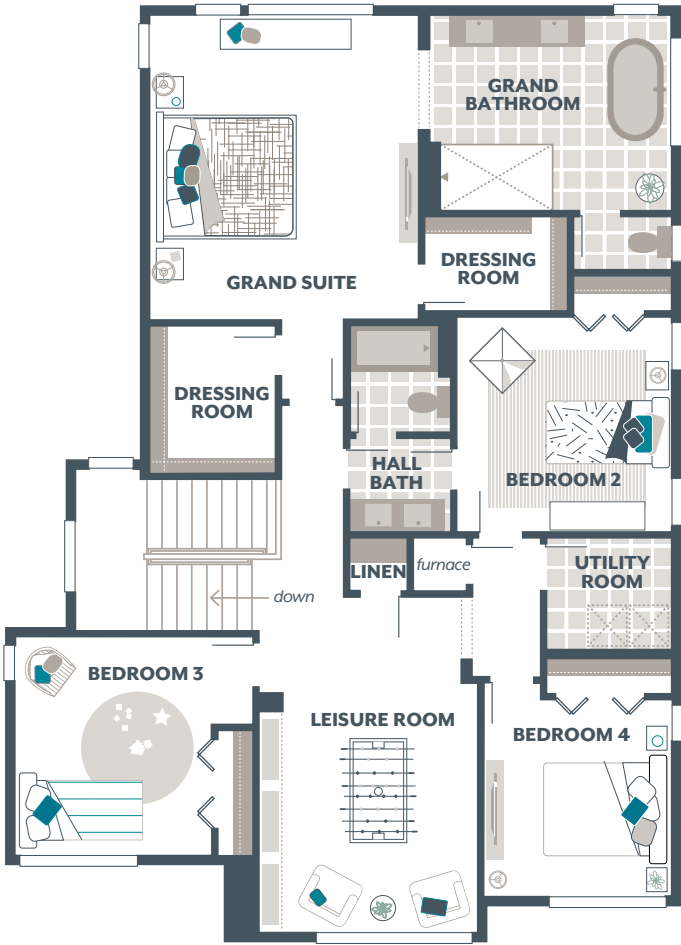
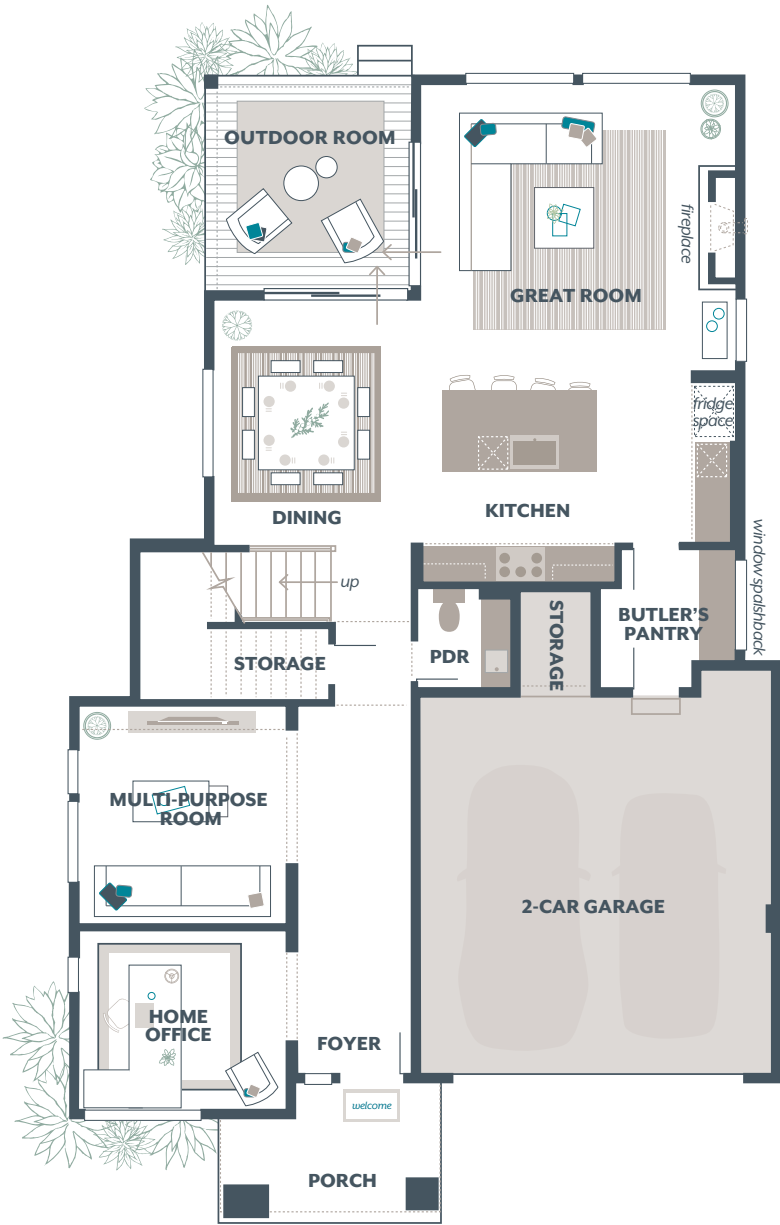
Great Room



Grand Bathroom



Kitchen, Dining Room



Designer Features

Home Office located at front of home for private work or study area

Flexible main floor Multi-Purpose Room with plush, stain-resistant carpeting

Butler's Pantry with unique window splashback and direct access to Garage

Luxurious Grand Suite with designer free-standing tub, frameless walk-in shower, and dual Dressing Rooms

Perfectly placed Leisure Room on the upper floor for an extra entertainment space

Signature Outdoor Room with direct access to Dining and Great Room via wall-height sliding glass doors

Home Vitals

SQUARE FOOTAGE:	
Main Floor	1,349
Upper Floor	1,652
Outdoor Room	138
Total Square Feet	3,139
Garage	461

SIGNATURE SPACES:
Signature Outdoor Room
Home Office
Multi-Purpose Room
Butler's Pantry
Garage Storage
Leisure Room

AVAILABLE OPTIONS:
Guest Room with Ensuite in lieu of Home Office and Multi-Purpose Room
Bedroom 2 Bathroom in lieu of Walk-In Closet
Bedroom 5 in lieu of Leisure Room

*The finished square footage areas provided are calculated based on ANSI Z765-2013 standards as commissioned by National Association of Home Builders (NAHB). Finished square footage calculations were made based on plan dimensions only and may vary from the finished square footage of the house as built. Finished square footages vary based on elevation styles and plan options. Total square footage used in marketing includes the outdoor room. Photography is for illustrative purposes and should be used as a guide.



ZINNIA

3,290 Square Feet, 4 Bedrooms, 2.5 Bathrooms, 2 Car Garage, Signature Outdoor Room, Main Floor Grand Suite, Multi-Purpose Room, Butler's Pantry, Leisure Room

On Display at the World of Model Homes

For the countless reasons a sweeping Grand Suite on the main level fits your specific needs, The Zinnia delivers an unparalleled arrangement. This top-of-its-class design is at its best when revealing surprises that soar and expand with its flawless details.

Intuitively, the main floor, far corner-set Grand Suite is arranged beyond a privacy-maximizing vestibule opening into the sleeping quarters. It's the entrée to the Grand Bathroom where thick Quartz shimmers on the broad dual-sink vanity under sleek designer lighting. Even without an excuse for a soothing soak, plunge into the decadent stand-alone tub or let the Grohe fixtures immerse you in the spray of the frameless glass shower. Store fluffy fresh towels in the on-trend cabinets or put extras in your generous Dressing Room. Upstairs, all three Secondary Bedrooms host their own Walk-In Closets. They also access an ingenious dual-entry Bathroom. The nearby Leisure Room fills an entire

quadrant of this level and can be enclosed to enhance privacy or an extra Bedroom.

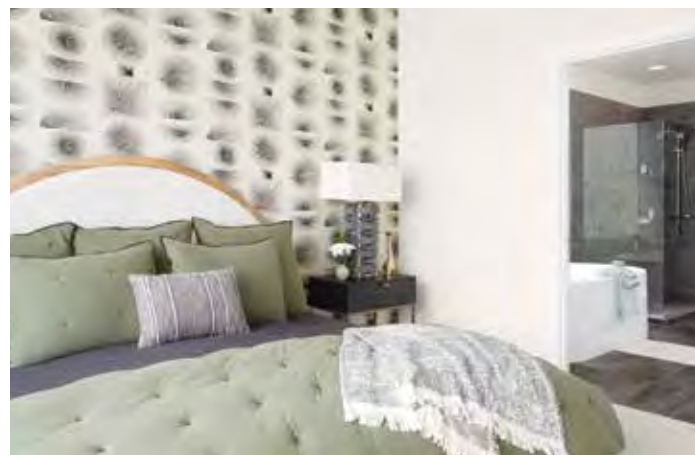
For a double-pop of wow, the upstairs hallway opens to main-level Foyer at one end and to the magnificent Great Room at the other via half-wall staircase. Luxury living space here hums throughout. The gourmet Kitchen – an upscale synthesis of KitchenAid appliances and designer tile backsplash – is a modern fusion with the sophisticated Dining and Great Rooms. Sharing the spotlights: a warm 36" fireplace, Quartz-crowned supersized service island, and the corner-set Signature Outdoor Room. Each flow together, creating expansive space as brilliant as the natural light streaming through its floor-to-ceiling sliding glass walls. Far more discreet: the walk-through Butler's Pantry with ample cabinet storage off the Kitchen, with owner access to the garage.

At the front of the home, meanwhile, the two-story Foyer features

chic wide-plank, timber-look flooring that leads to the adjacent Multi-Purpose Room – open or enclosed at your discretion. Call it a kids play zone, teen game room, family viewing studio, or semi-formal reception space: the potential is undeniable.

Without a doubt, your household is one-of-a-kind. With features found throughout The Zinnia, you can find the sweet, or suite, life you deserve.

THE ZINNIA
Better with the
Suite Life



Great Room



Kitchen



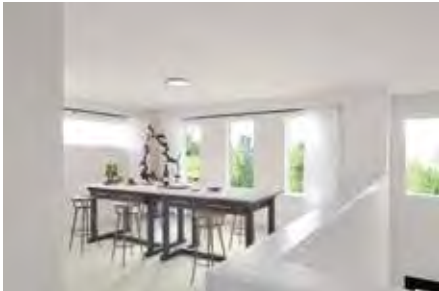
Great Room



Great Room



Grand Bathroom



Leisure Room

Designer Features

Main Floor Grand Suite with designer free-standing tub, frameless walk-in shower, and expansive Dressing Room

Signature Outdoor Room with direct access to Dining and Great Room via wall-height sliding glass doors

Soaring two-story Foyer and Great Room
Three secondary bedrooms, each with a Walk-In Closet

Flexible main floor Multi-Purpose Room with plush, stain-resistant carpet

Butler's Pantry with dual access from Gourmet Kitchen and the Garage

Perfectly placed Leisure Room on the upper floor open to the Great Room on lower floor



Home Vitals

SQUARE FOOTAGE:	
Main Floor	1,893
Upper Floor	1,245
Outdoor Room	152
Total Square Feet	3,290
Garage	411

SIGNATURE SPACES:
Signature Outdoor Room
Main Floor Grand Suite
Multi-Purpose Room
Butler's Pantry
Leisure Room

AVAILABLE OPTIONS:
Second Grand Suite on upper floor in lieu of Bedroom 2

*The finished square footage areas provided are calculated based on ANSI Z765-2013 standards as commissioned by National Association of Home Builders (NAHB). Finished square footage calculations were made based on plan dimensions only and may vary from the finished square footage of the house as built. Finished square footages vary based on elevation styles and plan options. Total square footage used in marketing includes the outdoor room. Photography is for illustrative purposes and should be used as a guide.



CYPRESS

3,295 Square Feet, 4 Bedrooms, 2.5 Bathrooms, 2 Car Garage, Signature Outdoor Room, Home Office, Butler’s Pantry, Leisure Room, Garage Storage

On Display at the World of Model Homes

Calm. Cool. Collected. The Cypress uses intentional design and refined styling to present a setting evoking a gentler side of living – one crafted to keep stress at bay.

Soften your mood as you approach the artful columns punctuating the contemporary facade. Through its custom-designed wood and frosted glass panel entry door, let the semi-enclosed, with option to fully enclose, Home Office model your life. Need an extra live-in space? Modify the Home Office into a Guest Suite with Bath or Guest Room to provide that perfect live-in option.

Upstairs, two of three Secondary Bedrooms offer ample Walk-In Closets. The third is spacious enough for two twin beds – and right around the corner from the Grand Suite, creating an ideal arrangement for soothing sleepless children. A baby nursery, perhaps? When paired with the oversized Dressing Room and Grand Bathroom, meanwhile, the luxurious Grand Suite is all about the

essence of adult-time “aaaaah.” Like a gift to yourself, close each day by stepping across the large, porcelain tile flooring into the sophisticated frameless walk-in shower or ease effortlessly into the warmth of the designer free-standing soaking tub.

Across from the upstairs Leisure Room, serene hours begin again each morning after descending the Great Room-access staircase. Drawn to perfection with the rest of the main level’s open-flow living area, the gourmet Kitchen whispers an invitation: pour a single cup of coffee just waiting to be sipped from the stillness of the Signature Outdoor Room – a priceless all-season respite for any time of day.

Once the rest of the world awakens, find handy breakfast ingredients in the Butler’s Pantry. It doubles as a clever walk-through to the garage. Even simple meals like cold cereal or easy-prep dinners feel on-trend when seated in the Dining Room, where its on-trend chandelier

elevates the contemporary vibe. Its partners-in-style: the Kitchen’s European-frameless cabinetry, tile backsplash accented by a unique window, stunning KitchenAid stainless appliances and thick Quartz countertops.

Resolved to offer relaxation, The Cypress places peace and tranquility right within your reach.

THE CYPRESS
Peace within
Reach





Designer Features

Home Office located at front of home for private work or study area

Butler's Pantry with unique window splashback, ample shelving and storage, plus direct access to the Garage

Luxurious Grand Suite with designer free-standing tub, frameless walk-in shower, and Dressing Room

Signature Outdoor Room with direct access to Dining and Great Room

Supersized, entertainment-ready Chef's Island adorned in extra-thick 3cm Quartz countertop, finished by flat polished edges

Three Secondary Bedrooms, two with a Walk-In Closet

Home Vitals

SQUARE FOOTAGE:	
Main Floor	1,326
Upper Floor	1,789
Outdoor Room	180
Total Square Feet	3,295
Garage	477

SIGNATURE SPACES:
Signature Outdoor Room
Home Office
Butler's Pantry
Leisure Room
Garage Storage

AVAILABLE OPTIONS:
Guest Room in lieu of Home Office
Guest Room with Ensuite in lieu of Home Office and Powder Room
¾ Bath in lieu of Powder Room

*The finished square footage areas provided are calculated based on ANSI Z765-2013 standards as commissioned by National Association of Home Builders (NAHB). Finished square footage calculations were made based on plan dimensions only and may vary from the finished square footage of the house as built. Finished square footages vary based on elevation styles and plan options. Total square footage used in marketing includes the outdoor room. Photography is for illustrative purposes and should be used as a guide.



THE BIRCH
Rise and
Shine



BIRCH

3,319 Square Feet, 4 Bedrooms, 2.5 Bathrooms, 2 Car Garage, Signature Outdoor Room, Multi-Purpose Room, Study Nook, Grand Butler’s Pantry, Leisure Room

On Display at the World of Model Homes

With a spirit of renewal and the power of smart home design, fresh and engaging places pop throughout The Birch with a distinctive sense of daily revival.

Bright vibes begin even before you wake up each morning in your luxurious Grand Suite. Subliminally, sense the awaiting comforts of your sumptuous Grand Bathroom while you enjoy your final snooze: warm water spraying over you in the frameless walk-in shower; personal care items arranged atop your stunning Quartz-crowned vanity with twin vessel sinks; designer tile beneath your feet, accenting the porcelain flooring and free-standing tub. Dual Dressing Rooms assure optimal wardrobe arrangements.

Each of three Secondary Bedrooms, meanwhile, features its own Walk-In Closet. All are intentionally arranged off the Leisure Room and hallway with a half-wall looking out to the bright Great Room beckoning be-

low. Need an additional bedroom? MainVue can modify the Leisure Room for this. There’s always more space for casual entertainment in the main level’s Multi-Purpose Room, with the option to enclose. With its plush stain-resistant carpeting, imagine this multi-faceted hangout hosting a teen homework hub or rough-and-tumble play-group.

Across the hallway’s wide-plank, timber-look flooring, meanwhile, fall in love with a dedicated Study Nook – an uncommonly appealing niche for paying bills, planning your next vacation or filling the house with piano music.

Display your collection of art, books and family photographs here before the hallway turns into the unrivaled Kitchen with its light-kissed super-sized island with glimmering Quartz counters, dazzling tile and unique window splashback. Hidden and handy, the Grand Butler’s Pantry

has its own window splashback – plus a full-proof place for stocking groceries. Whip up breakfast to enjoy in the sophisticated Dining Room or, via the sliding walls of full-height glass, in the fresh air of the Signature Outdoor Room. The visual seamlessness is underscored with the lofty Great Room’s buoyant two-story ceiling, reinforcing the affirming vibe.

Rest. Revive. Repeat. It’s your renaissance spirit living in The Birch.

Great Room



Kitchen



Great Room



Leisure Room



Study Nook



Grand Suite

Designer Features

Soaring two-story Great Room

Unique Study Nook off Foyer provides additional work or study space

Flexible main floor Multi-Purpose Room with plush, stain-resistant carpeting

Unique window splashback in Gourmet Kitchen and Grand Butler's Pantry for added light and accent

Grand Butler's Pantry with 3cm Quartz counters and ample cabinets for storage

Luxurious Grand Suite with designer free-standing tub, frameless walk-in shower, and dual Dressing Rooms

Walk-In Closet in each of the three Secondary Bedrooms

Home Vitals

SQUARE FOOTAGE:	
Main Floor	1,308
Upper Floor	1,874
Outdoor Room	137
Total Square Feet	3,319
Garage	401

SIGNATURE SPACES:
Signature Outdoor Room
Study Nook
Multi-Purpose Room
Grand Butler's Pantry
Leisure Room

AVAILABLE OPTIONS:
Bedroom 5 in lieu of Leisure Room



*The finished square footage areas provided are calculated based on ANSI Z765-2013 standards as commissioned by National Association of Home Builders (NAHB). Finished square footage calculations were made based on plan dimensions only and may vary from the finished square footage of the house as built. Finished square footages vary based on elevation styles and plan options. Total square footage used in marketing includes the outdoor room. Photography is for illustrative purposes and should be used as a guide.



VERBENA

3,561 Square Feet, 4 Bedrooms, 2.5 Bathrooms, 2 Car Garage, Signature Outdoor Room, Home Office, Multi-Purpose Room, Butler's Pantry, Leisure Room

On Display at the World of Model Homes

There's no possible price-tag for togetherness. And the luxury of privacy? That's invaluable, too. When combined, coveted places for solitude and equally welcomed open spaces for friends-and-family connections strike a perfect balance in The Verbena.

Intentionally, it's more than just knowing you can enclose the Home Office, already framed by the front trend-forward Porch. It also means you may consider enclosing the always flexible Multi-Purpose Room with its plush shoes-off carpeting, when it diverts from the fashionable Foyer. This four-bedroom design is ready for any way you need it to be – and then some.

Start by pampering yourself in the Grand Suite. It fills the entire rear width of The Verbena. That means if you sneak upstairs for a weekend nap, no one will bother you. Post-snooze, the designer free-standing

tub and frameless, tiled walk-in shower in the Grand Bathroom are a powerful combination. And if this wasn't enough pampering, natural light promises to flow into the windowed, oversized Dressing Room.

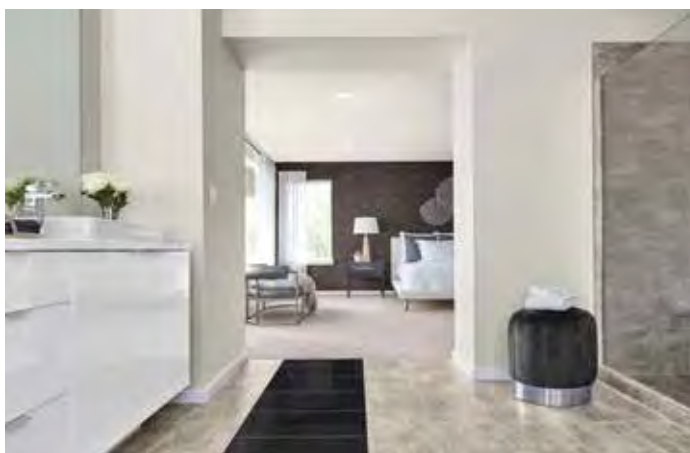
At the front of this second level: three Secondary Bedrooms, each with a Walk-In Closet. All share a large Hallway Bath near the handy Utility Room and spacious Linen Closet. Just around the corner: a Leisure Room – the go-to spot for your cycling device, remote Zoom or Teams connections, or safe kid sleepovers.

Downstairs, when flames flicker from the 36" gas fireplace, the choice is yours: sink by yourself into your favorite Great Room furniture or play host in this ultra-open setting. This dynamic centerpiece ties into a chic Dining Room, Signature Outdoor Room, and an incredibly versatile Kitchen. Follow the Kitch-

en's Quartz-capped countertops, backlit by a dynamic window back-splash, to a secluded Butler's Pantry with an additional Walk-In Pantry. They share homeowner-exclusive access to the Garage, with enamel floor finish, for convenient shop-and-drops.

Togetherness. Privacy. A blend of both. With The Verbena, it's a perfect package. Who knew it could look and feel this luxurious?

THE ORCHID
Layered in
Luxury



Great Room



Kitchen



Dining Room



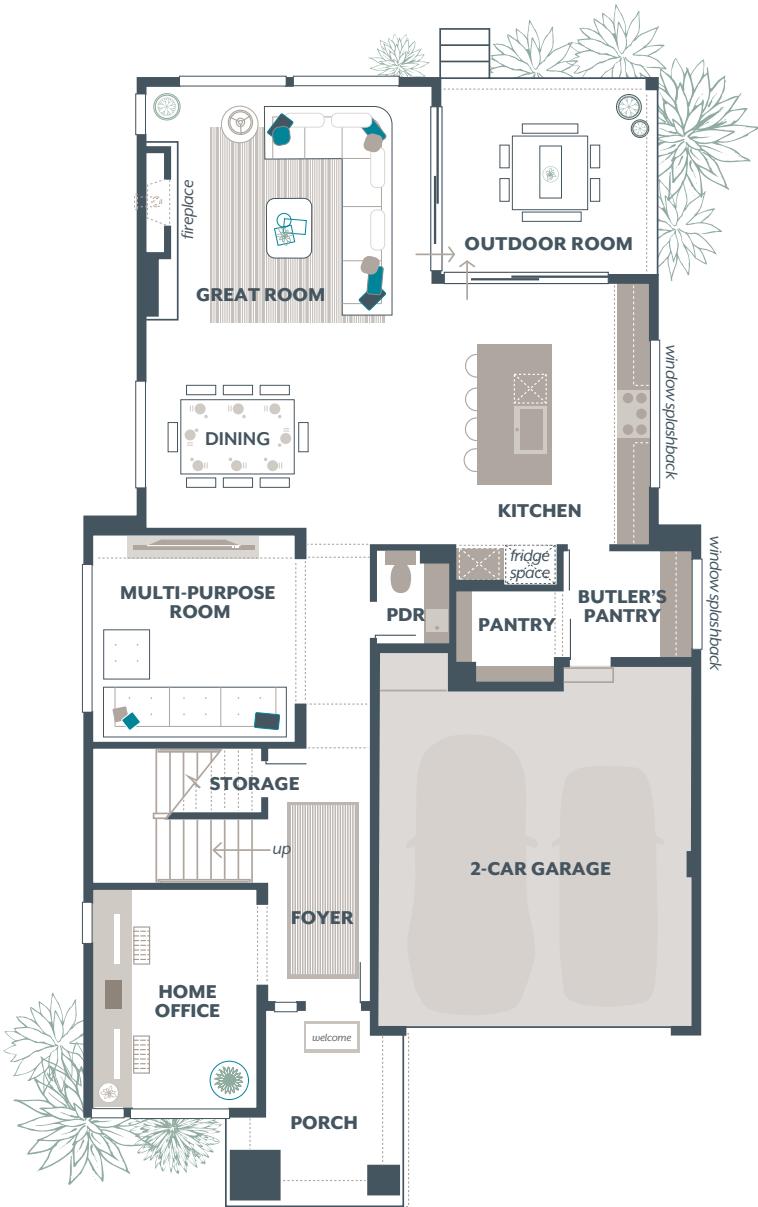
Grand Bathroom



Leisure Room



Foyer, Home Office



Designer Features

Home Office located at front of home for private work or study area

Flexible main floor Multi-Purpose Room with plush, stain-resistant carpeting

Gourmet Kitchen featuring unique window splashback, 3cm Quartz counters and European frameless cabinetry

Butler's Pantry with window splashback, additional walk-in Pantry and direct access to Garage

Luxurious Grand Suite with designer free-standing tub, frameless walk-in shower, and expansive Dressing Room

Signature Outdoor Room with direct access to Dining and Kitchen via wall-height sliding glass doors

Home Vitals

SQUARE FOOTAGE:	
Main Floor	1,480
Upper Floor	1,922
Outdoor Room	159
Total Square Feet	3,561
Garage	434

SIGNATURE SPACES:

Signature Outdoor Room

Home Office

Multi-Purpose Room

Butler's Pantry

Leisure Room

AVAILABLE OPTIONS:

Guest Room in lieu of Multi-Purpose Room

¾ Bathroom in lieu of Powder Room

*The finished square footage areas provided are calculated based on ANSI Z765-2013 standards as commissioned by National Association of Home Builders (NAHB). Finished square footage calculations were made based on plan dimensions only and may vary from the finished square footage of the house as built. Finished square footages vary based on elevation styles and plan options. Total square footage used in marketing includes the outdoor room. Photography is for illustrative purposes and should be used as a guide.



FUCHSIA

3,582 Square Feet, 4 Bedrooms, 2.5 Bathrooms, 2 Car Garage, Signature Outdoor Room, Study, Multi-Purpose Room, Grand Butler's Pantry, Leisure Room

On Display at the World of Model Homes

Watch modern creativity meet inspired opportunity. It always elicits extra looks. In The Fuchsia, this marriage is far more than eye candy. Design depth and better-than-open-floor-plan styling culminate in features that are more than eye-popping. They're grounded in luxurious practicality.

Yes, the fashionable entry Foyer soars two beautiful stories – but it's impossible to resist the view down via the half-wall from the upstairs Leisure Room. This spot revels in MainVue's only-one-of-its-kind Study – an open-to-above space which tandems with the Foyer for the same magnificent effect. As a result, balancing work-from-home and school homework projects has never been easier.

Eyes can't help but follow the brushed-grain finish of the main level's timber-look flooring past the Multi-Purpose Room. Though semi-enclosed, you may choose to

turn this flexible space into a Guest Room or enclose it for a kids play or entertainment zone.

Either way, it transitions into unforgettable flowability in the sophisticated Great Room. Line-of-sight melds seamlessly here with the chic Dining Room and gourmet Kitchen to frame their nexus: the Signature Outdoor Room.

Floor-to-ceiling window walls slide open to this enchanting all-season enclave. Watch guests envy the clean composite decking outside. And your Kitchen's gleaming Quartz-capped supersized island inside. And the sparkle of the Dining Room chandelier along with the Great Room's alluring 36" fireplace with a winsome entertainment wall.

What guests may not see: exceptional shelving in the Walk-in Pantry and discreet Grand Butler's Pantry – a walk-through to the garage with storage nook. Both play a more sup-

porting role to the Kitchen's showier KitchenAid Stainless Steel appliances and European style, soft-close cabinets.

For guest-free intimacy, three Secondary Bedrooms near the peak of the staircase buffer the Leisure Room from the Grand Suite's classic double-door entrance. Soak in the Grand Bathroom's luxurious stand-alone tub. Rinse in the frameless walk-in shower under chrome Grohe hardware. Select your wardrobe from either of two spacious Dressing Rooms. Stylize for nightlife or prep for daywear at the Quartz-crowned vanity with two oversized vessel sinks.

Keeping your eyes on the prize? No matter how you look at The Fuchsia, the winner is you.

THE FUCHSIA
Dynamic
Double-Takes



Grand Bathroom



Great Room



Grand Suite



Study



Kitchen



Multi-Purpose Room



Designer Features

Soaring two-story Foyer and Study

Flexible main floor Multi-Purpose Room with plush, stain-resistant carpeting

Grand Butler's Pantry with unique window splashback, 3cm Quartz counters, additional Walk-In Pantry and direct access to Garage

Centrally located Signature Outdoor Room with direct access to the Great Room, Gourmet Kitchen and Dining Room

Luxurious Grand Suite with designer free-standing tub, frameless walk-in shower, and expansive Dressing Room

Perfectly placed Leisure Room on the upper floor for an extra entertainment space

Home Vitals

SQUARE FOOTAGE:	
Main Floor	1,643
Upper Floor	1,789
Outdoor Room	150
Total Square Feet	3,582
Garage	425

SIGNATURE SPACES:

Signature Outdoor Room
Study
Multi-Purpose Room
Grand Butler's Pantry
Leisure Room

AVAILABLE OPTIONS:

Guest Room in lieu of Multi-Purpose Room
¾ Bathroom in lieu of Powder Room

*The finished square footage areas provided are calculated based on ANSI Z765-2013 standards as commissioned by National Association of Home Builders (NAHB). Finished square footage calculations were made based on plan dimensions only and may vary from the finished square footage of the house as built. Finished square footages vary based on elevation styles and plan options. Total square footage used in marketing includes the outdoor room. Photography is for illustrative purposes and should be used as a guide.



THE ROSA DUET
Perfect Pairings
Under One Roof



ROSA DUET

3,677 Square Feet, 5 Bedrooms, 3.5 Bathrooms, 2 Car Garage, Signature Outdoor Room, Duet Living Suite, Grand Butler's Pantry, Leisure Room, Garage Storage

Ever-changing faces of contemporary families are impossible to capture in a one-size-fits-all home design. That's why MainVue offers The Rosa Duet—a malleable plan successfully crafted for needs of those who matter most to you.

It's more than a sophisticated home with all its enviable MainVue luxury inclusions. And it goes far beyond attractive overnight accommodations. This Multi-Generational Plan melds a MainVue's Duet Living Suite – an iconic and independent dwelling-within-a-dwelling. It means your permanent or extended-stay guests or family find comfort in calling their slice of this home their own home.

Nothing for extended guests is left to chance. And nothing for the primary family dwelling is sacrificed.

Beyond its spacious sleeping quarters, The Duet Living Suite offers all the trimmings imaginable, including shared fashionable Foyer entry past the modern facade and columned front porch. From here, Duet Living leads to a guest-only double-door Vestibule. To the left: a generous

Guest Leisure Room with kitchenette arranged for full-service meal preparation: a refrigerator, microwave, electric cooktop and dishwasher framed by exquisite Quartz counters. To the right: the inviting Guest Bedroom, with exclusive bath and Walk-In Closet.

Back in the main hallway, exceptional configurations continue as the timber-look flooring leads past the Powder Room and classic staircase. Upon arrival in the sweeping Kitchen, chic Quartz crowns the supersized island, and rich European cabinets reveals its largesse of entertainment potential. Visually fused with the sophisticated Dining Room, warm Great Room and Signature Outdoor Room, this is the ultimate definition of togetherness. But don't stop here. Full height sliding window walls to the year-round Signature Outdoor Room extend openness toward the landscaped rear yard. Drinks around a fire, anyone?

Tucked behind the kitchen: a Grand Butler's Pantry with stunning Quartz surfaces. Savvy connectivity from

the Grand Butler's Pantry with walk-through access to the garage for even larger storables sweetens the deal.

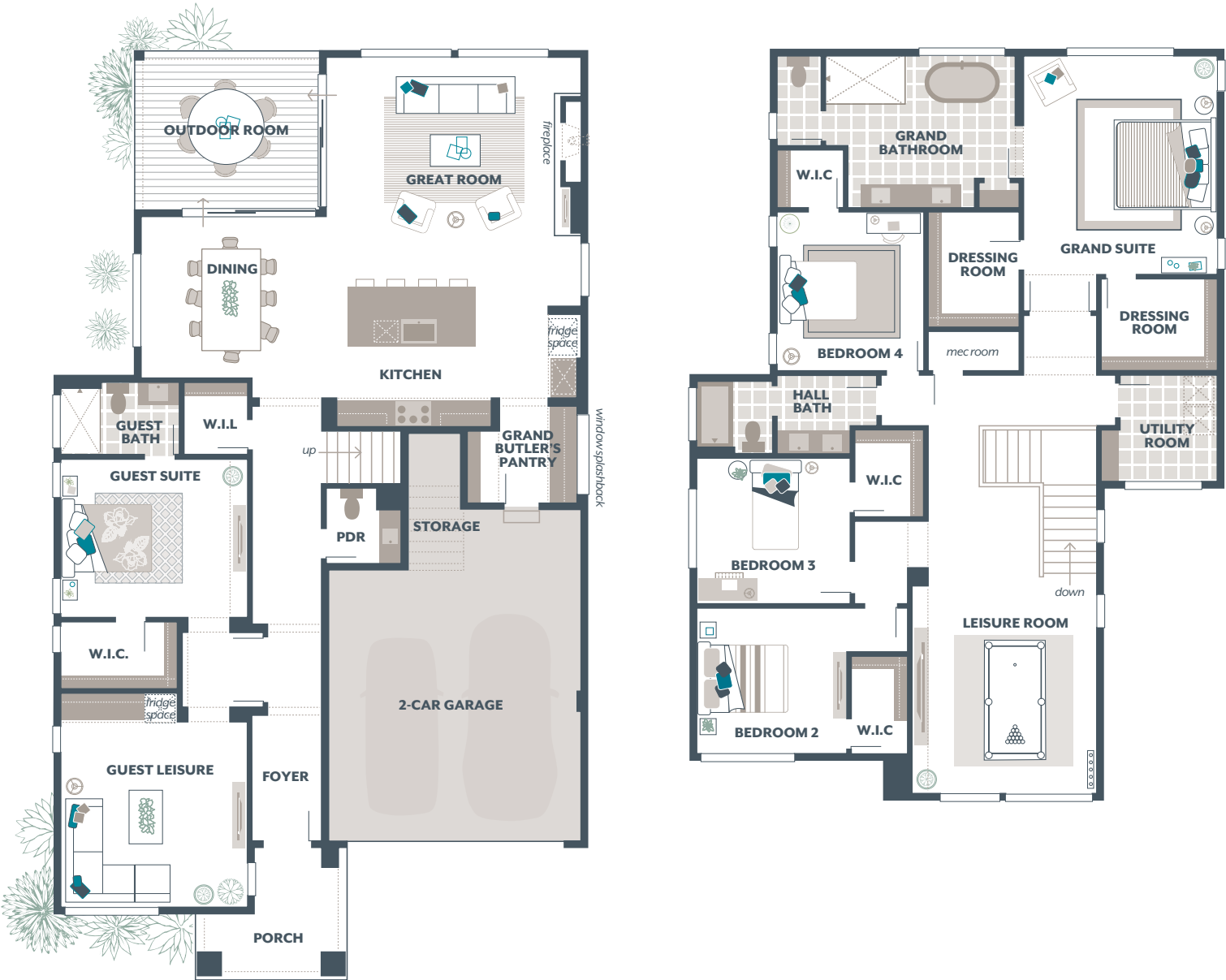
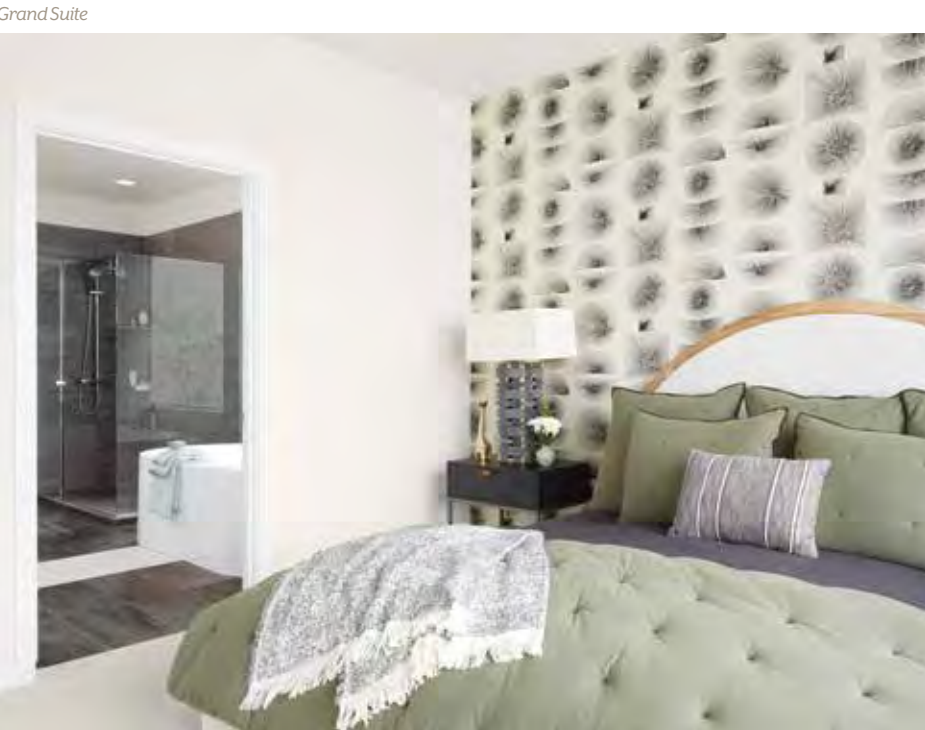
Upstairs, the focus is on luxurious privacy. The Rosa Duet's upper-level Master Suite showcases a stunning bathroom and wardrobe amenities. Porcelain tile flooring leads to the stand-alone tub, frameless shower and Quartz-capped vanity with twin vessel sinks. Dual Dressing Rooms are separate off the sleeping quarters.

Not to be outdone, two Secondary Bedrooms down the hall feature entry via their own Vestibule off the popular Leisure Room. Both Bedrooms offer generous Walk-In Closets.

For two couples. Live-in grandparents. Families with a nanny or au pair. Young adults living with parents before finding their own home. There is no need to sacrifice luxury amenities for anyone in The Rosa Duet. With Duet Style Living, The Rosa Duet only multiplies the splendor.

ROSA DUET

3,677 Square Feet 5  / 3.5  / 2 



Designer Features

Flexible Duet Living Suite to accommodate multi-generational living arrangements

Duet Living Suite features a private main floor Guest Suite with private bathroom, Guest Leisure and Kitchenette

Kitchenette features refrigerator, microwave, Electric cooktop, dishwasher and Quartz counters

Grand Butler's Pantry and direct access to Garage with extra storage

Signature Outdoor Room accessed from the Great Room or Dining Room via wall-height sliding glass doors

Home Vitals

SQUARE FOOTAGE:	
Main Floor	1,662
Upper Floor	1,849
Outdoor Room	166
Total Square Feet	3,677
Garage	489

SIGNATURE SPACES:
Signature Outdoor Room
Duet Living Suite
Grand Butler's Pantry
Leisure Room
Garage Storage

*The finished square footage areas provided are calculated based on ANSI Z765-2013 standards as commissioned by National Association of Home Builders (NAHB). Finished square footage calculations were made based on plan dimensions only and may vary from the finished square footage of the house as built. Finished square footages vary based on elevation styles and plan options. Total square footage used in marketing includes the outdoor room. Photography is for illustrative purposes and should be used as a guide.



DAHLIA

3,781 Square Feet, 4 Bedrooms, 2.5 Bathrooms, 2 Car Garage, Signature Outdoor Room, Multi-Purpose Room, Home Office, Grand Butler's Pantry, Leisure Room

On Display at the World of Model Homes

No matter how it's sliced, spliced or fused, The Dahlia is meticulously crafted together in a dream-like fashion just for you. For some, it starts by choosing to enclose an especially generous Home Office and separate Multi-Purpose Room off the fashionable Foyer. For others, it's opting to blend these spaces and shift the original Powder Room into a complete three-quarter Bath. This result: a welcoming Guest Suite – and smart move for scheduled family stays or spontaneous overnighting friends.

Once everyone finds their way to the chic Kitchen, they'll discover thick Quartz crowning the elegant island and the open service-ready Grand Butler's Pantry - just steps from a storage-smart Walk-In Pantry behind a closed door. Light flows as naturally as guests through floor-to-ceiling sliding glass doors, connecting the sophisticated Signature

Outdoor Room with the modern interior Great Room.

Volume levitates above the two-story Great Room toward the upstairs Leisure Room, crafted with a half-wall open to below. You can almost picture kindergarten (and high school) graduation celebratory toasts from here. For less formality, this bare-feet-and-slippers zone is flexible enough for yoga and purposeful enough for homework. After hours? Cozy TV binge-watching, of course. Branch off the Leisure Room into a clever vestibule-like hallway, unbraiding into three Secondary Bedrooms, each with its own Walk-In Closet.

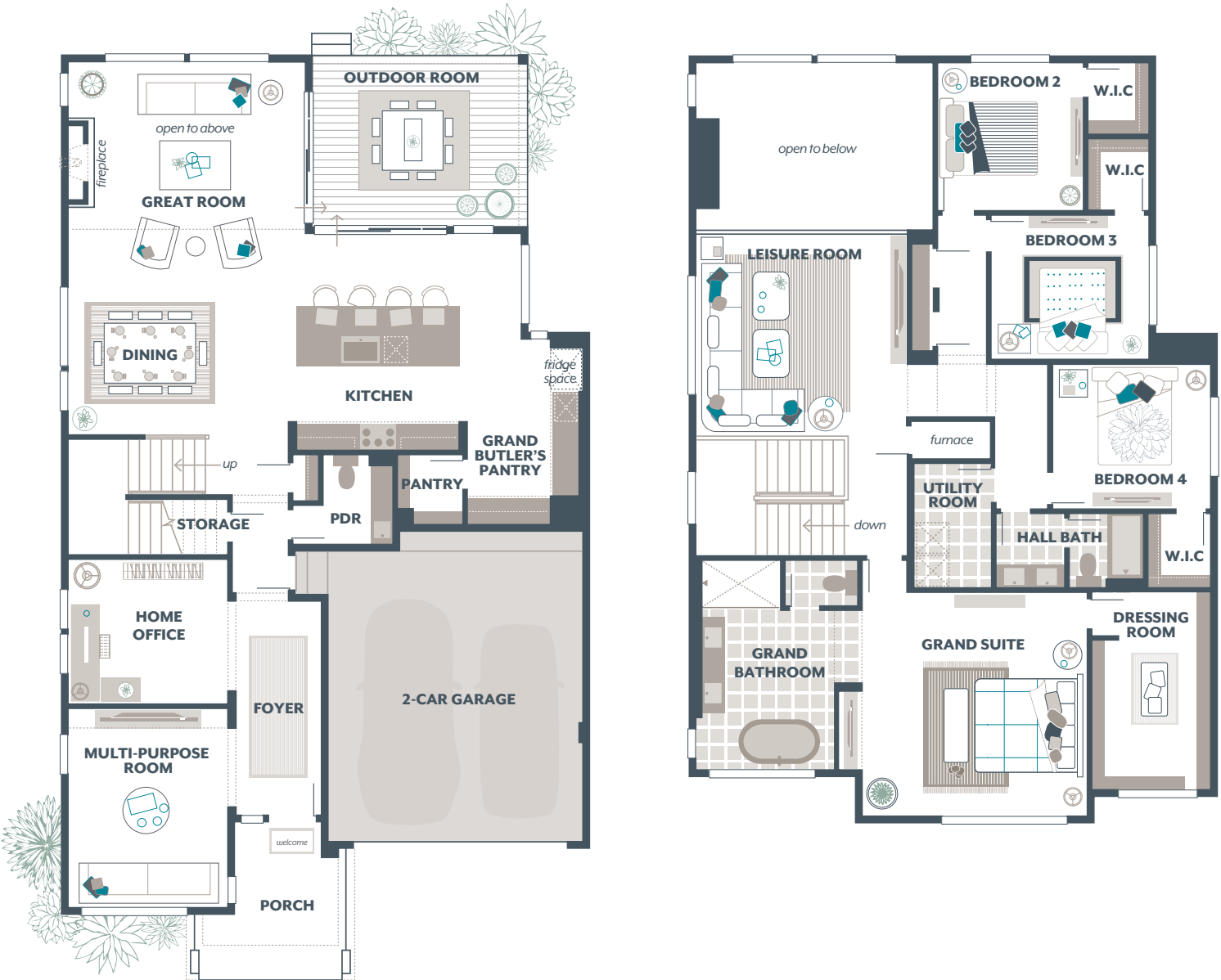
Arranged for privacy, the Grand Suite is in a class all its own. In addition to its generous sized Dressing Room, Grand Bathroom luxury is evident by a dual vessel-sink vanity, fashionable frameless walk-in

shower, sleek polished nickel-finish lighting and a free-standing soaking tub with hand sprayer.

Each sliver and slice in the Dahlia is brilliant on its own. Woven together, they craft unrivaled dream-like appeal.

THE DAHLIA
The Ultimate
Dream Weaver





Designer
Features

Soaring two-story Great Room

Home Office and Multi-Purpose Room
located on main floor for flexible work or
study areas

Grand Butler's Pantry with 3cm Quartz
counters and additional Walk-In Pantry

Luxurious Grand Suite with designer
free-standing tub, frameless walk-in
shower, and expansive Dressing Room

Three secondary bedrooms, each with a
Walk-In Closet

Signature Outdoor Room with direct
access to Dining and Great Room via
wall-height sliding glass doors

Home
Vitals

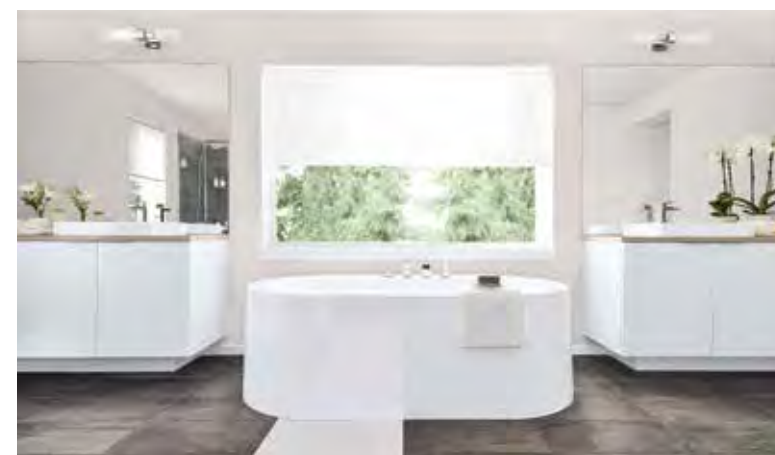
Square Footage:	
Main Floor	1,661
Upper Floor	1,908
Outdoor Room	212
Total Square Feet	3,781
Garage	476

Signature Spaces:	Available Options:
Signature Outdoor Room	Guest Room with Ensuite in lieu of Multi-Purpose Room and Home Office
Multi-Purpose Room	Guest Room in lieu of Multi-Purpose Room
Home Office	¾ Bathroom in lieu of Powder Room
Grand Butler's Pantry	
Leisure Room	

*The finished square footage areas provided are calculated based on ANSI Z765-2013 standards as commissioned by National Association of Home Builders (NAHB). Finished square footage calculations were made based on plan dimensions only and may vary from the finished square footage of the house as built. Finished square footages vary based on elevation styles and plan options. Total square footage used in marketing includes the outdoor room. Photography is for illustrative purposes and should be used as a guide.



THE BRIAR
Crème de la
Crème



BRIAR

4,055 Square Feet, 4 Bedrooms, 3.5 Bathrooms, 2 Car Garage, Signature Outdoor Room, Home Office, Multi-Purpose Room, Grand Butler's Pantry, Leisure Room

On Display at the World of Model Homes

Homemade heaven. Convenient carry-out. Freezer faves. No matter the demands asked of your gourmet Kitchen, the culinary success story in The Briar earns a five-star rating. Discover how this and every other space in this home shifts into best-drive on a moment's notice.

In your chefs' Kitchen whip up elaborate family recipes using energy-efficient Stainless Steel KitchenAid appliances, accented by gorgeous European style cabinets and stunning Quartz-crowned counters. And equally accurate: on busy days, the walk-through Grand Butler's Pantry is a direct link to quick take-out arriving home through your garage. The bonus walk-in Grand Butler's Pantry nearby, ensures there is always organized shelving for go-to ingredients, too.

From semi-formal to super-casual, The Briar has a modern myriad of places to dine. Holiday dinners take center stage under the Dining Room's dazzling chandelier. Weekend brunch sprawls across the Kitchen's Quartz-finished supersized island. Glide across magnificent tim-

ber-look, wide-plank flooring to the open-flow Great Room, backlit by enormous windows, for popcorn-and-a-ballgame afternoons.

Spectacular ceiling-height sliding walls of glass, meanwhile, open to the popular Signature Outdoor Room. There is more than enough space here to grill for guests year-round.

Down the hallway, toward the Foyer, textured stain-resistant carpet in the semi-enclosed Multi-Purpose Room becomes a hotspot for after-school snacks and homework. Fully enclose this room and nearby Home Office if you choose – or ask MainVue to merge both into a single Guest Suite.

Upstairs, one of three Secondary Bedrooms is already an ensuite for family, nanny or overnight guests. The adjacent Leisure Room, meanwhile, buffers these bedrooms from the entire rear of The Briar. This is reserved for the Grand Suite – a wealth of space set behind striking French doors. Off one side of the sleeping quarters: a spacious Dress-

ing Room. Off the other: a contemporary Bath Suite with two Quartz-capped vanities, each with its own gorgeous vessel sink. It is ideal for couples who like to spread out personal care products. The vanities bookend the stand-alone soaking tub across the stunning porcelain tile flooring from the frameless walk-in shower.

For discerning tastes drawn to luxurious lifestyles, The Briar proves that touches like these are always a cut above.

Grand Bathroom



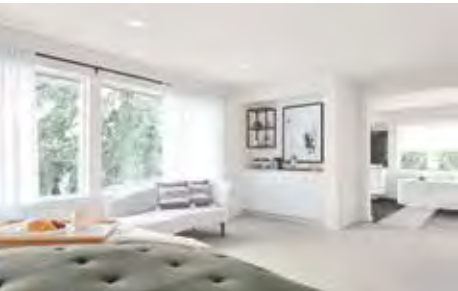
Kitchen



Dining, Outdoor Room



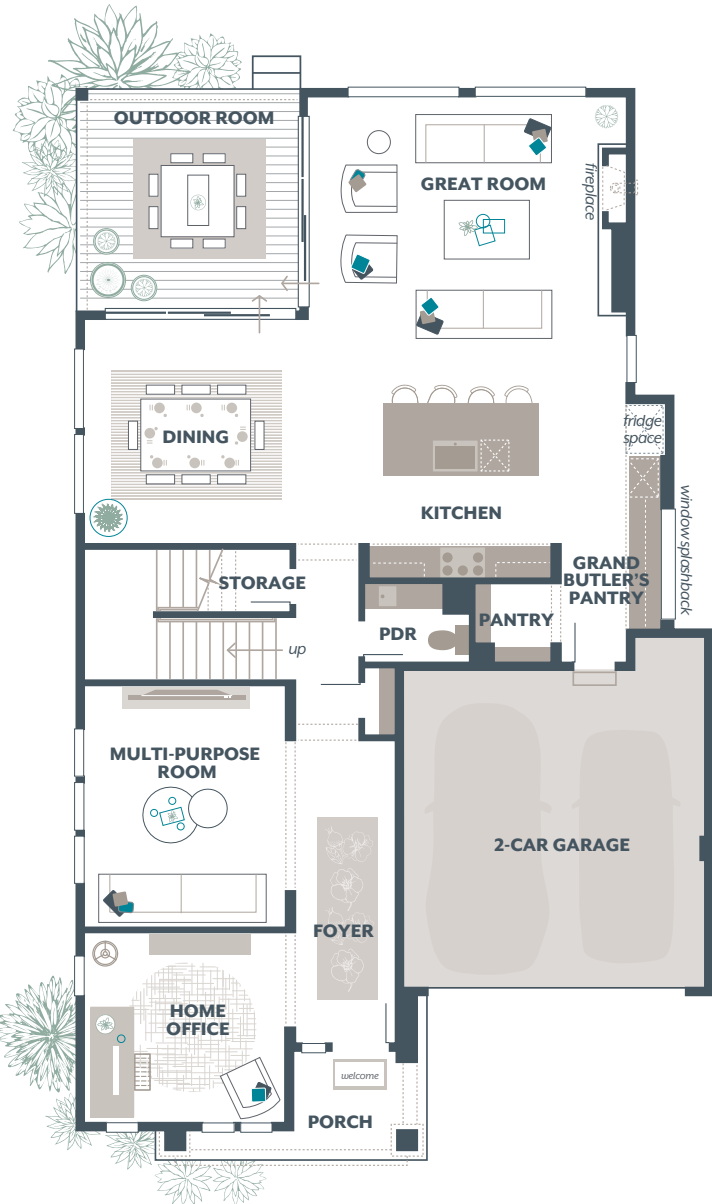
Great Room



Grand Suite



Great Room



Designer Features

Home Office located at front of home for private work or study area

Flexible main floor Multi-Purpose Room with plush, stain-resistant carpeting

Grand Butler's Pantry with 3cm Quartz counters, unique window splashback and direct access to Garage

Signature Outdoor Room with direct access to Great Room and Dining via wall-height sliding glass doors

Luxurious Grand Suite with expansive Dressing Room, designer free-standing tub, frameless walk-in shower and split dual vanities

Perfectly placed Leisure Room on the upper floor for an extra entertainment space

Home Vitals

SQUARE FOOTAGE:	
Main Floor	1,682
Upper Floor	2,176
Outdoor Room	197
Total Square Feet	4,055
Garage	409

SIGNATURE SPACES:	AVAILABLE OPTIONS:
Signature Outdoor Room	Guest Room with Ensuite in lieu Multi-Purpose Room and Home Office
Home Office	¾ Bathroom in lieu of Powder Room
Multi-Purpose Room	
Grand Butler's Pantry	
Leisure Room	

*The finished square footage areas provided are calculated based on ANSI Z765-2013 standards as commissioned by National Association of Home Builders (NAHB). Finished square footage calculations were made based on plan dimensions only and may vary from the finished square footage of the house as built. Finished square footages vary based on elevation styles and plan options. Total square footage used in marketing includes the outdoor room. Photography is for illustrative purposes and should be used as a guide.



THE IVY
Powered by
Luxurious
Energy



IVY

4,109 Square Feet, 4 Bedrooms, 3.5 Bathrooms, 3 Car Garage, Signature Outdoor Room, Home Office, Multi-Purpose Room, Grand Butler's Pantry, Leisure Room

Re-charge your lifestyle with The Ivy – an ultra-volume design offering so much quantum space and intelligent alternatives that this home almost powers itself on modern flexibility.

Generate sophisticated entertainment energy across the entire rear of the main level, where the Kitchen, Great Room, Dining Room and semi-enclosed Multi-Purpose Room frame the dynamic Signature Outdoor Room, where two sets of magnificent full-height sliding glass walls slide open to further maximize space.

While the Signature Outdoor Room opens outward to the landscaped rear yard, the double-story ceiling soars upward over the Great Room and Dining Room adding even greater dimension to its contemporary dynamics.

From the Kitchen, further fuel your hospitality from the Quartz-capped service island and counters, complementing the attractive European style cabinets. It's easy to whip

up on-the-spot dinners just steps from the Grand Butler's Pantry with discreet access to a savvy Walk-In super-stock-and-storage Pantry and a hidden door to the three-bay garage.

Even with all this space, The Ivy prioritizes personalization. Consider asking MainVue to tailor the Guest Room with two variations. Expand the Powder Room into a three-quarter Bath. Enclose your separate Home Office for greater work privacy. Alternate Kitchen layouts are available to best suit your needs, too.

Upstairs, the vibe is set to rest. At the staircase summit, look down into the Great Room, or from the front-facing Leisure Room, onto the fashionable Foyer below – but leave the get-up-and-go behind.

One of three Secondary Bedrooms here is an ensuite; all boast their own Walk-In Closets. Spoiled like this, no one complains about doing laundry because the Utility Room is nearby.

It's convenient, as well, for the exclusive upstairs hallway leading toward the Grand Suite – flush with a generous Dressing Room and rich in bath amenities, including stylish Grohe faucets, chic vessel sinks and a decadent free-standing soaking tub.

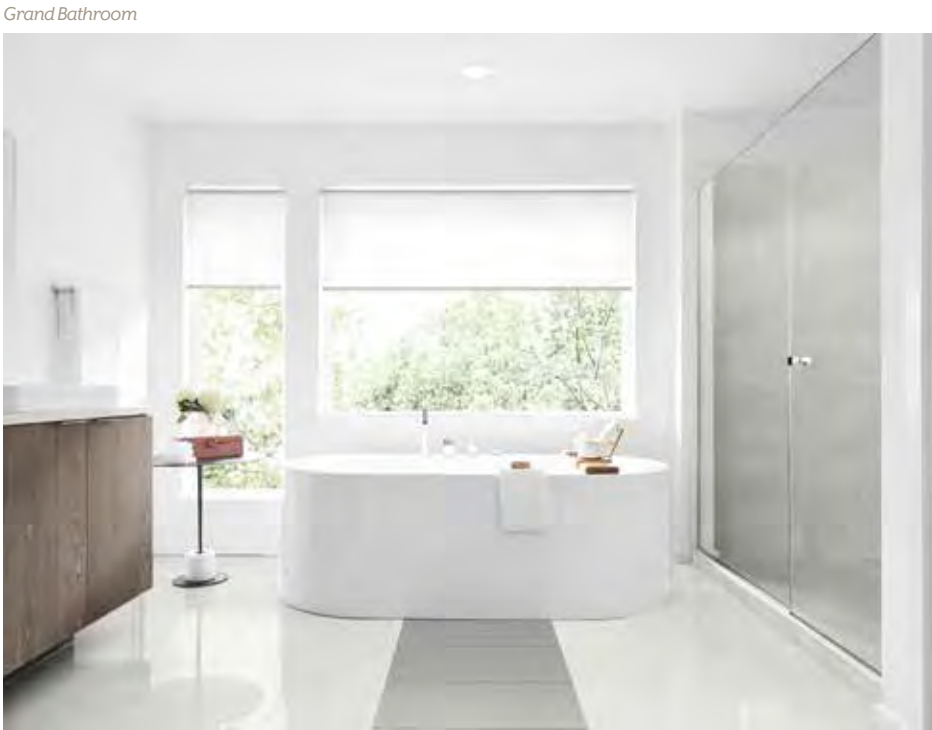
Dynamic. Sophisticated. Modern. And all with no batteries needed because The Ivy clearly finds its power boosters from its own luxurious energy.



Kitchen



Leisure Room



Great Room



Great Room



Foyer, Home Office



Designer Features

Soaring Two-Story Foyer, Great Room, and Dining Room

Home Office located at front of home for private work or study area

Flexible main floor Multi-Purpose Room with plush, stain-resistant carpet

Grand Butler's Pantry with direct access to Garage and additional Walk-In Pantry featuring unique window splashback

Luxurious Grand Suite with designer free-standing tub, frameless walk-in shower, and dual vanities capped in Quartz

Centrally located Signature Outdoor Room with direct access to Great Room and Kitchen

Home Vitals

SQUARE FOOTAGE:	
Main Floor	1,809
Upper Floor	2,098
Outdoor Room	211
Total Square Feet	4,109
Garage	720

- SIGNATURE SPACES:**

 - Signature Outdoor Room
 - Home Office
 - Multi-Purpose Room
 - Grand Butler's Pantry
 - Leisure Room
- AVAILABLE OPTIONS:**

 - ¾ Bath in lieu of Powder Room
 - Guest Room with ¾ Bath Ensuite in lieu of Home Office and Powder Room
 - Guest Room with Ensuite in lieu of Multi-Purpose Room

*The finished square footage areas provided are calculated based on ANSI Z765-2013 standards as commissioned by National Association of Home Builders (NAHB). Finished square footage calculations were made based on plan dimensions only and may vary from the finished square footage of the house as built. Finished square footages vary based on elevation styles and plan options. Total square footage used in marketing includes the outdoor room. Photography is for illustrative purposes and should be used as a guide.



LOTUS

4,239 Square Feet, 4 Bedrooms, 4.5 Bathrooms, 2 Car Garage, Signature Outdoor Room, Home Office, Multi-Purpose Room, Grand Butler's Pantry, Leisure Room, Garage Storage

On Display at the World of Model Homes

From curbside to Kitchen – and places you’ve never before imagined - The Lotus is a take-no-shortcuts design. Instead, it always lives up. With a design considered one of the largest in MainVue’s innovative collection, The Lotus makes what was intentional appear spontaneous. Best of all: this spacious home goes out of its way to infuse sophisticated styling into thoughtfully engineered layouts.

Work from your main level Home Office off the fashionable Foyer and later relax in the nearby Multi-Purpose Room – or merge these into a welcoming Guest Suite. For a slightly different scale, the flexible Multi-Purpose Room can be crafted into a Guest Room while retaining the Home Office.

Overnight hospitality is second nature here. Two of three Secondary Bedrooms upstairs are already ensuites, featuring their own Private Bathrooms and generous Walk-In Closets; the third, with its own Walk-In Closet, is equally spacious and

shares a Bath with the corner-set Leisure Room.

The Grand Suite hallway staging introduces classic French doors, revealing the sleeping quarters, with dual Dressing Rooms dovetailing off the side. They’re separate from the resort-like Grand Bathroom amenities: an extra-large double-sink vanity crowned by resplendent Quartz; sparkling glass-enclosed shower; and sleek vanity lighting. Why not double down on the bubbles in the free-standing soaking tub? Towels and sheets arrive fresh from the convenient Utility Room behind the staircase.

For those most wonderful times of the year, it’s exceptionally fortunate – and intentional - that the main level’s Dining Room is framed by three magnificently oversized windows, reflecting chandelier lights and guests inspiring this space. Segue to the Great Room’s focal-point stainless steel-framed 36” fireplace or the prospect of your own Signature Outdoor Room firepit.

Whether it’s a casual charcuterie board or elaborate holiday feast, the Kitchen’s supersized island stands ready. The well-stocked Grand Butler’s Pantry shares the same thick 3cm Quartz countertop and unique window splashback, so extravagant weekend brunches and last-minute after-parties appear equally natural. Discreet storage for the expected (and unexpected) is tucked under the hallway staircase and within designated bonus garage storage.

For leisure. For entertainment. For lounging. For hospitality. Calling The Lotus home is the bonus style that means you’re ready for anything. Anytime.

THE LOTUS
Bonus
Up





Designer Features

Home Office and flexible Multi-Purpose Room located off Foyer

Unique window splashback in Gourmet Kitchen and Grand Butler's Pantry for added light and accent

Oversized Dining Room with three picture windows

Expansive Signature Outdoor Room with direct access to Great Room and Dining Room via wall-height sliding glass doors

Luxurious Grand Suite with designer free-standing tub, frameless walk-in shower, and dual Dressing Rooms

Three Secondary Bedrooms, two with

Private Bathrooms and Walk-In Closet

Supersized, entertainment-ready Chef's Island adorned in extra-thick 3cm Quartz countertop, finished by flat polished edges

Home Vitals

Square Footage:	
Main Floor	1,728
Upper Floor	2,288
Outdoor Room	223
Total Square Feet	4,239
Garage	465

- Signature Spaces:

 - Signature Outdoor Room
 - Home Office
 - Multi-Purpose Room
 - Leisure Room
 - Garage Storage
 - Grand Butler's Pantry
- Available Options:

 - Guest Room with Ensuite in lieu of Multi-Purpose Room and Home Office
 - Guest Room in lieu of Multi-Purpose Room
 - ¾ Bathroom in lieu of Powder Room

*The finished square footage areas provided are calculated based on ANSI Z765-2013 standards as commissioned by National Association of Home Builders (NAHB). Finished square footage calculations were made based on plan dimensions only and may vary from the finished square footage of the house as built. Finished square footages vary based on elevation styles and plan options. Total square footage used in marketing includes the outdoor room. Photography is for illustrative purposes and should be used as a guide.



AZALEA

4,417 Square Feet, 5 Bedrooms, 3.5 Bathrooms, 2 Car Garage, Signature Outdoor Room, Home Office, Multi-Purpose Room, Grand Butler's Pantry, Guest Room, Recreation Room, Leisure Room, Grand Suite Deck

Like fuel to flame, modern creativity sparks instantly with inspired opportunity to light up three brilliant levels in The Azalea. Designs rarely get more vivid than naturally illuminated features here. Oversized windows frame the ground-level Patio. Sensational sets of sliding glass doors outline the main level Signature Outdoor Room. Invitation-only window walls divide the Grand Bedroom from the bath on the third-level Grand Suite Deck.

This is all before light finds its way into the sophisticated Foyer through its custom glass-panel entry door - or basks its shining Quartz-capped counters in the Grand Butler's Pantry through an artful window splash-back.

Just try taking your eyes off the modern chandelier dazzling in the Dining Room while flush-mount, energy-efficient LED lighting plays mood-setter for the Kitchen. Recessed can lights dim romantically in the centerpiece Signature Outdoor

Room for open-air cocktail parties. The Great Room fireplace glows with an ambiance all its own.

Equally thoughtful lighting bathes interior spaces when and where it's needed most: professionalism feels more polished in the Home Office off the Foyer while teens can pull off all-nighters in the semi-enclosed Multi-Purpose Room.

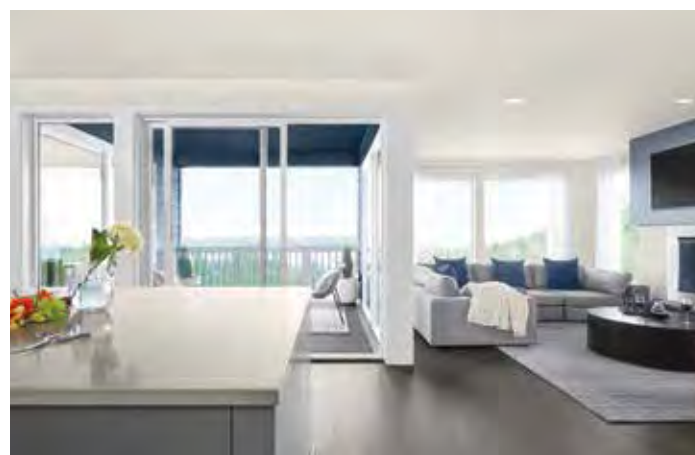
For family-time privacy, the top-of-the-staircase Leisure Room is perfect for sweats-and-pajama moments. Sip coffee. Practice yoga poses. Host a kids' toy zone. Three Secondary Bedrooms define the front of this plush carpeted level; a hallway to the Grand Suite's double-door entrance creates a separate wing. Wrap up in a cozy robe from either of the dual Dressing Rooms before soaking in the luxurious tub, then melt into a chaise on your exclusive Grand Suite Deck.

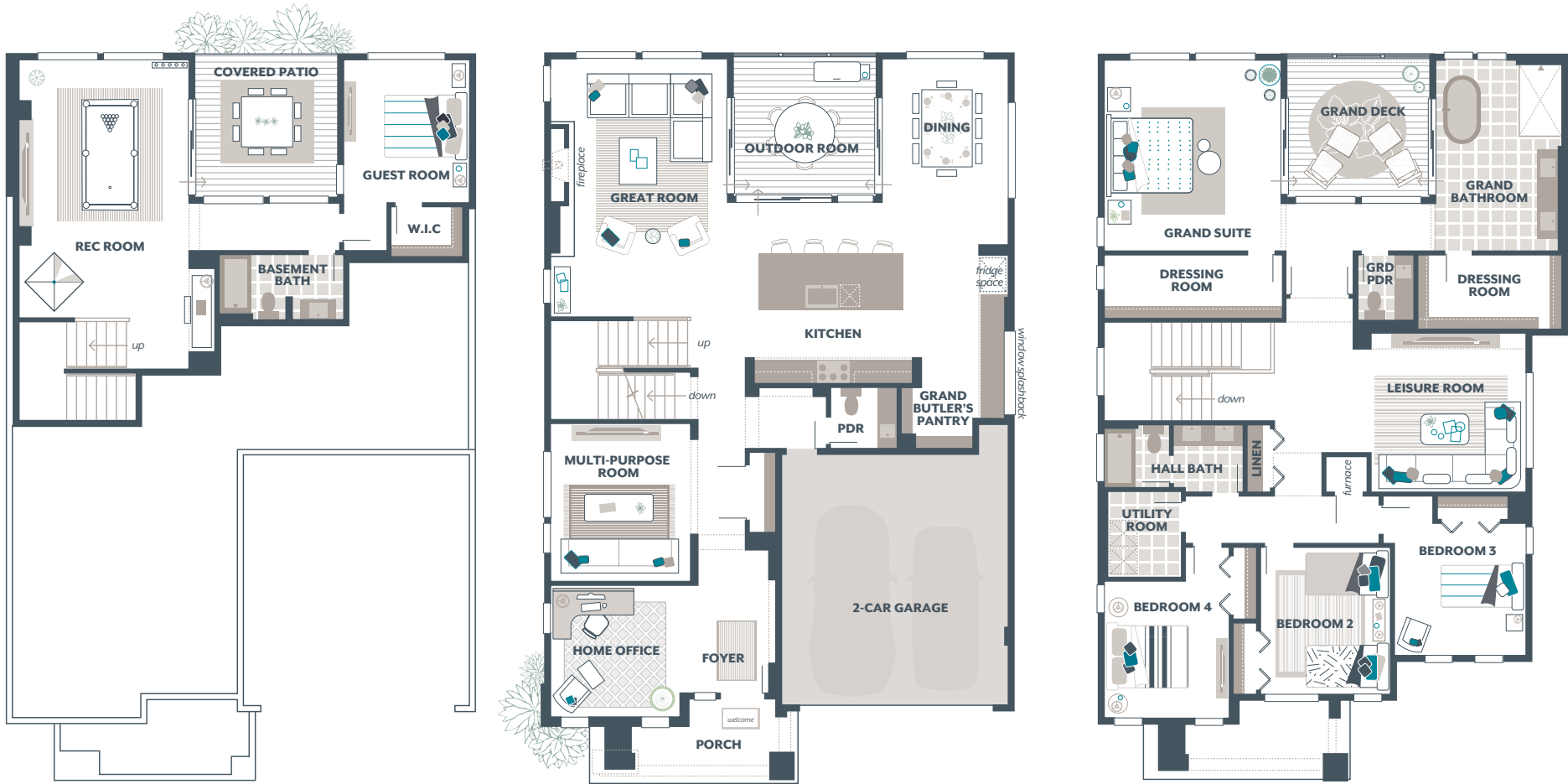
Two floors below, flip the basement vibe switch for higher energy in

the ever-ready Recreation Room. It's spacious enough for a gaming table or wall-set entertainment display, and frames one side of the ground-level patio wall. The Guest Bedroom on this level, meanwhile, bookends the other side.

No matter the room, The Azalea seems to have a way of turning up the spotlight in any of its luxurious spaces.

THE AZALEA
The Spotlight
of Fine Living





Designer Features

Three-Story Basement home design with Guest Room, Recreation Room and Patio

Grand Suite feature unique exterior Deck with dual sliding glass doors accessing the Bathroom and Bedroom

Grand Butler's Pantry with unique window splashback, 3cm Quartz counters and ample cabinets for storage

Centrally located Signature Outdoor Room surrounded by 3 walls of sliding glass doors with access to Dining, Kitchen and Great Room

Supersized, entertainment-ready Chef's Island adorned in extra-thick 3cm Quartz countertop, finished by flat polished edges

Home Office and Multi-Purpose Room located on Main Floor creating flexible work and play spaces

Home Vitals		SIGNATURE SPACES:		AVAILABLE OPTIONS:	
SQUARE FOOTAGE:		Signature Outdoor Room		Guest Room in lieu of Multi-Purpose Room	
Lower Floor	818	Home Office		¾ Bathroom in lieu of Powder Room	
Main Floor	1,594	Multi-Purpose Room			
Upper Floor	1,861	Grand Butler's Pantry			
Outdoor Room	144	Guest Room			
Total Square Feet	4,417	Recreation Room			
Garage	425	Leisure Room			
		Grand Suite Deck			

*The finished square footage areas provided are calculated based on ANSI Z765-2013 standards as commissioned by National Association of Home Builders (NAHB). Finished square footage calculations were made based on plan dimensions only and may vary from the finished square footage of the house as built. Finished square footages vary based on elevation styles and plan options. Total square footage used in marketing includes the outdoor room. Photography is for illustrative purposes and should be used as a guide.



MAINVUE HOMES

Step into Serenity





COLOR SCHEMES

A Professional Palette of Charismatic Color

Science. Art. Instinct. MainVue Homes' professional designers tap into all three when curating six riveting color palettes that blend, layer and pop throughout an exquisite range of choices.

Feel your personal aesthetic come alive as dynamic colors and subtle undertones appear straight from the best of Pacific Northwest nature. From sultry to soul-stirring and glamorous to relaxing, MainVue's color schemes capture vibes that appear equally effortless and sophisticated.

Immerse yourself in the sometimes bold, other times placid clusters of chroma that punctuate the textures, dimensions and patterns throughout each modern home.

Saturated with black ebony and contrasted with glossy white refinements, Pewter calls out to those seeking a cosmopolitan edge. Its end result: classy.

Dark woodsy tones enhance tech-style grays with Slate. Bouncing off the ice-white accents here, warmth ultimately shines through.

Ride your own waves with Opal. Pearly white and alabaster tones combine with fresh blues and natural grays to create a current of coastal-like brilliance.

A little bit sexy, a whole lot of glamorous and even more relaxing, the classical remix of textural grays and warm brown tones plays like cool jazz in Carbon. Some call it spell-binding.

Prolific in its natural shades and hues, Shale is bathed in sun-washed light woods and brightened glossy white finishes. Embrace these details and then let them embrace you.

Set against the halcyon effect of its platinum and calming grays, dark timber tones and organic whites add an indelible impression with Jade. There's no denying the restorative effect on your spirit.

With MainVue's diverse color schemes, each is like of gallery of art in its own right.

For tools to help you pick your favorite scheme visit [MAINVUEHOMES.COM/COLOR SCHEMES](https://mainvuehomes.com/color-schemes)





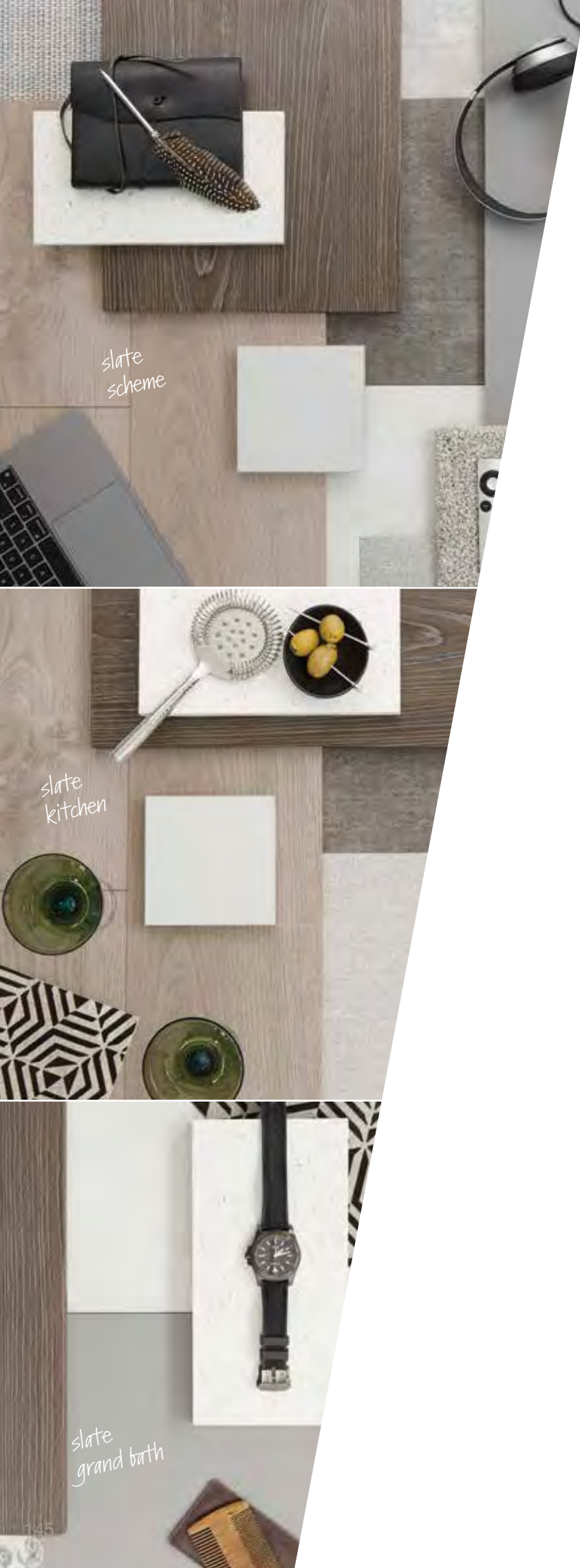
MAINVUE COLOR SCHEMES

PEWTER

Bold black ebony frames a cosmopolitan vibe against refined white finishes – a high-contrast design for glossy sensations.

Forge the look. Bold. Striking. These high-contrast chromatics are urbane at their finest. Entertain guests in the expansive Great Room from the elegance of white lacquer upper Kitchen cabinets and black timber-look lower cabinets. An ebony carryover to the center island arranged on dark wide-plank flooring is yet another refined touch. Glossy black ceramic tile pops on the backsplash – an antithesis to white Quartz with marbled veining gleaming from countertops. Equally classy: white lacquer cabinets mingling with honed brown tile in the Grand Bathroom. Even better: a high-gloss polished black tile stripes contrasting against white Quartz marbling accents. You've known it all along: you were meant for this cosmopolitan style.





slate
scheme

slate
kitchen

slate
grand bath

MAINVUE COLOR SCHEMES

SLATE

*Modern tech-type gray and dark
woody tones stand out against
ice-white and masculine brown
to establish a cool mix.*

Tech inspired. Contemporarily curated. Every facet of the wide-plank gray- and brown-toned flooring draws you deeper into your Kitchen. Post your entertainment domain here – strong, yet with all the right space to relax. A robust island downloads a dark woodsy finish. Ice-white Quartz countertops cool things off with subtle shaken/ not stirred speckles. Span out to the Dining Room for formality; lounge in the Signature Outdoor Room to mellow. Unwind further in the Grand Bathroom defined by masculine dark brown cabinets. Bold accents resonate from polished gray flooring. Cast off the day's pressure surrounded by polished gray shower wall tiles that rise above concrete-honed accent ribbons striping the floor.





MAINVUE COLOR SCHEMES

OPAL

Breathe in the clarity of pearly white and alabaster tones, while fresh blues and natural grays cast a coastal vibe.

Light. Airy. Let these fresh blue hues wash over you. As resplendent as shimmering grains of sand on a perfect beachside day, gray Quartz Kitchen countertops play off a sky-blue ceramic tile backsplash and pearly white lacquer cabinets. Juxtaposed against gray textured carpet and dark wide-plank brushed floors surrounding the kitchen's focal-point island, this combination crafts an evocative coastal sensation. Grand Bathroom flooring, meanwhile, beckons a barefoot walk over textured white accent stripes and concrete deco tiles. These extend throughout the shower's walls – near the alabaster white lacquer cabinets. Perfectly coastal indeed.





MAINVUE COLOR
SCHEMES

CARBON

When textural grays tango with sophisticated warm brown tones, it's a sultry and classical remix for the ages.

Flash back. Trend forward. When dark wide-plank flooring meets gray textured carpeting, the classical remix is undeniably sophisticated. It's about welcoming guests to festive acoustics throughout an open-design Great Room. Where warm brown timber-look upper Kitchen cabinets tango with gray-peppered lower and magnificent island cabinets. Where white-rippled deco backsplash tile takes the up-tempo texture lead while gray countertops play flawless bass. It's the kind of remix that is also about slow-dance mornings in your Grand Suite across white-rippled deco flooring – a tile blend flowing onto shower walls with dark-gray tile accent downbeats. Sultry gray countertops honor warm brown, timber-look cabinets. Call it texture remix - further re-imagined.



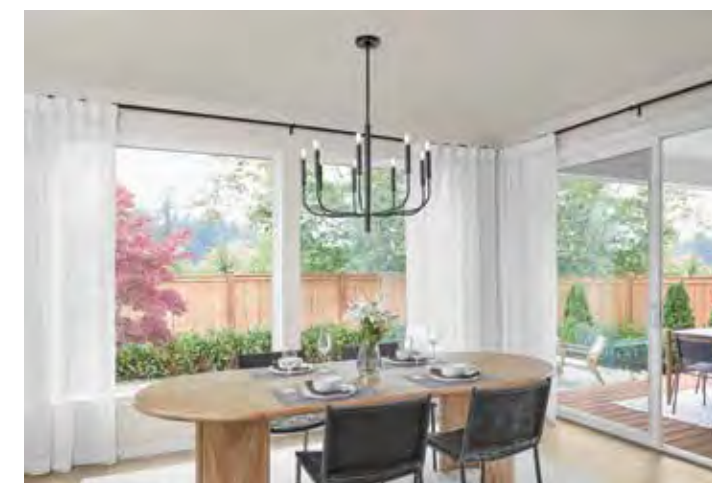


MAINVUE COLOR SCHEMES

SHALE

This color compass is set for comfortable, crossing eclectic and natural paths warmed by a sense of light black, glossy white and warm finishes.

Global, yet local. Eclectic, yet natural. Your inner world traveler always finds your own North Star pointing to favorite comforts. There's no one-size-fits-all Kitchen palette here. Natural-effect light wood looks finish upper cabinets; cleansing painted white cabinets underscore lower cabinets; exquisitely painted black cabinets dazzle the sprawling island. Picture guests admiring the light Quartz warming countertops while a large-format glossy-white backsplash steals the show. Undeniably bright: the Grand Bathroom. Textured bedroom carpet segues into an iron-look tile-like bathroom floor. Shower walls capture the same effect while intermittently featuring white pleated accent tiles. Paired with white painted cabinets and warm Quartz countertops, your diverse color scheme is boundless.



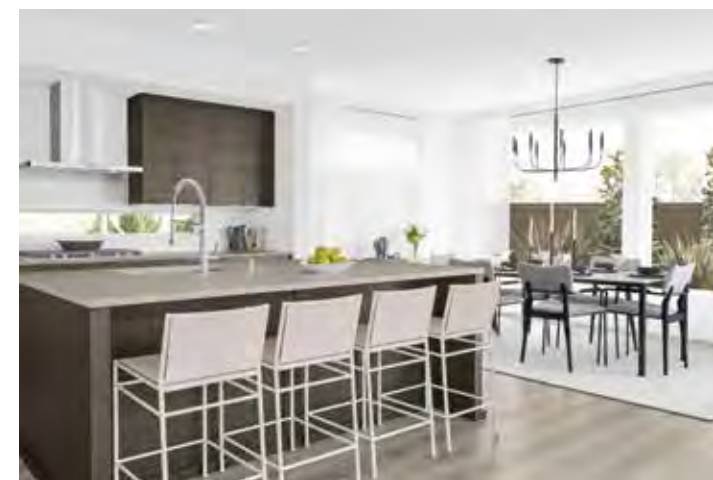


MAINVUE COLOR SCHEMES

JADE

Like a calming balm, grays touch up against dark timber tones and organic whites to instill soul-soothing reflection.

Grounding. Healing. Feel the restorative life-force of brushed metallic tile flooring and shower walls enlighten the Grand Bathroom. Gray concrete-like Quartz acts like organic dream-stones dusting dark timber-look cabinets throughout the Bath and Kitchen. Creative in its blend of textures, large white wood ceramic tiles grace the Kitchen backsplash – all while imbuing a reflective soul-soothing sense of calm. Mindful grays brushed atop kitchen counters and wide planks of flooring suffuse a natural sense of harmony.







DESIGNER FACADES

Find the Facade that Suits Your Lifestyle

The interior of your home says so many things about you, but it's the exterior of your home that makes an always important first statement.

MainVue introduces a wide range of distinctive and modern facade choices, each with variations that assure your own unique look. When enhanced by our selection of accents and finishes, your compelling facade begins showcasing a personal preference even before you cross the threshold.

With this full range of select MainVue designer facades to consider, it's easy to begin conveying that important first impression. We know that accent variety - brick, ledgerstone or tile – makes a difference in the way you want to present your personal place

on a streetscape, as well. From MainVue's designer color schemes and grand entries, to over-sized windows and premier lighting fixtures, your preference means everything to us.

And at MainVue Homes, you enjoy the confidence of knowing our professional team is ready to share our full spectrum of facades from which to choose - all so you are ensured of selecting a new-home exterior that pleases your eye, reflects your lifestyle and complements your budget.

Ask us how our selections can add character and texture to your home facade - a canvas that will become an ultimate work of art.

Explore all of MainVue designer facades at [MAINVUEHOMES.COM/FACADES](https://mainvuehomes.com/facades)



Facade Type: K



Facade Type: GH



Facade Type: E

Facade Type: W



Facade Type: N



Facade Type: H



Facade Type: T



Facade Type: S



Facade Type: XB



Facade Type: GE



MAINVUE FACADES

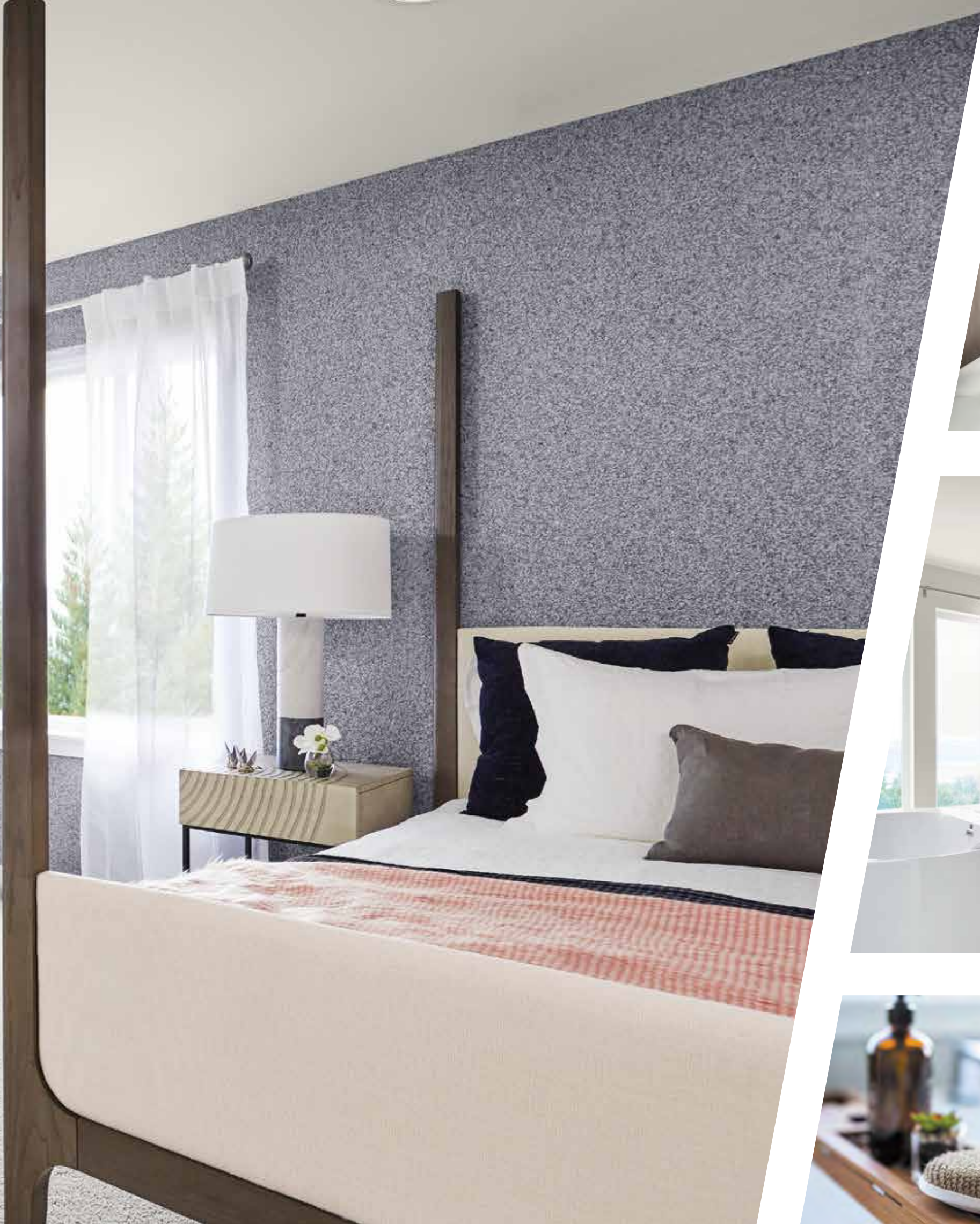
Riveting Exteriors

MAINVUE HOMES

Cleverly Crafted Spaces







MAINVUE HOMES

A New View on Living





MAINVUE HOMES

THE DIFFERENCE
IS EVERYWHERE

WORLD OF MODEL HOMES

13 Models on Display
10833 SE 216th St, Kent 98031

1.800.764.8171
MAINVUEHOMES.COM

