

# BONAIRE

3157 SQUARE FEET



4



4.1



2

## 40' HOME DESIGN

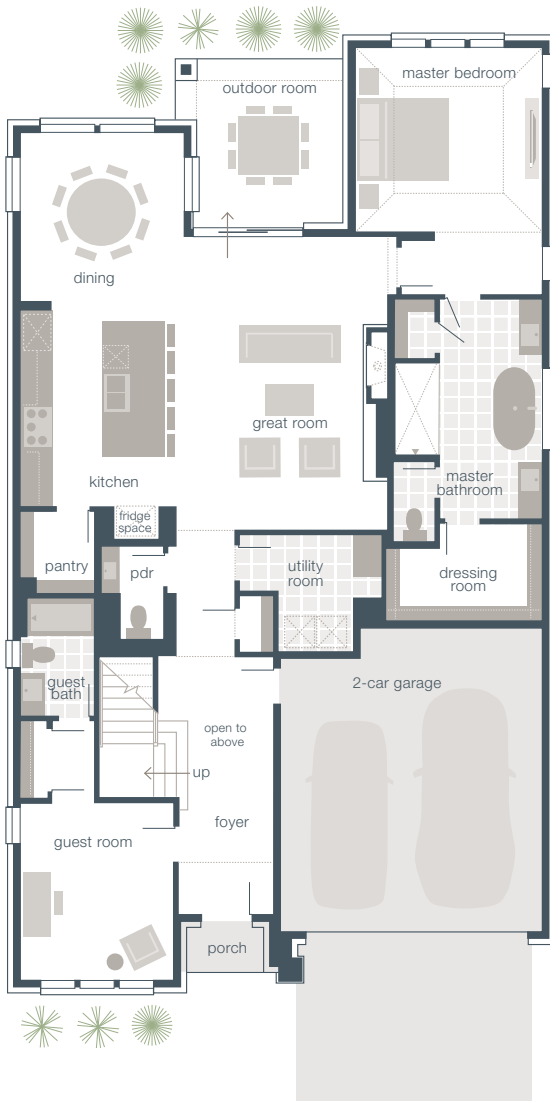
Exclusively Available at Ridgeview Crossing in Allen, Texas

Main Floor	2005	4 Bedrooms	Guest Room with private bath
Upper Floor	1152	4.1 Baths	
<b>TOTAL SF</b>	<b>3157</b>	2 Car Garage	
Outdoor Room	142	Outdoor Room	
Garage	453	Leisure Room	

### AVAILABLE PLAN OPTIONS:

- 5 Bedrooms
- Theater Room
- 5 Bedrooms and Theater Room

**OPTION DRAWINGS ON BACK**



**MAINVUE**<sup>TM</sup>  
HOMES

mainvuehomes.com



**BONAIRE**  
5 BEDROOMS



**BONAIRE**  
THEATER ROOM



**BONAIRE**  
5 BEDROOMS AND THEATER ROOM



**ASK US ABOUT  
PRICING,  
AVAILABILITY  
AND HOW TO  
PERSONALIZE  
THIS DESIGN!**

**1.866.407.1020  
MAINVUEHOMES.COM**



\*The photo shown is used for illustrative purposes only and may not be an exact representation of the product. Facade and color scheme are subject to change. Contact our sales consultants for specific details. The finished square footage areas provided are calculated based on ANSI Z765-2193 standards as commissioned by National Association of Home Builders (NAHB). Finished square footage calculations were made based on plan dimensions only and may vary from finished square footage of the home as built.