

BALI

3265 SQUARE FEET



4



4.1



2

40' HOME DESIGN

Exclusively Available at Ridgeview Crossing in Allen, Texas

Main Floor	2057	4 Bedrooms	Study
Upper Floor	1208	4.1 Baths	Grand Butler's Pantry
TOTAL SF	3265	2 Car Garage	Guest Room with private bath
Outdoor Room	130	Outdoor Room	
Garage	465	Leisure Room	

AVAILABLE PLAN OPTIONS:

- 5 Bedrooms
- Theater Room
- 5 Bedrooms and Theater Room

OPTION DRAWINGS ON BACK

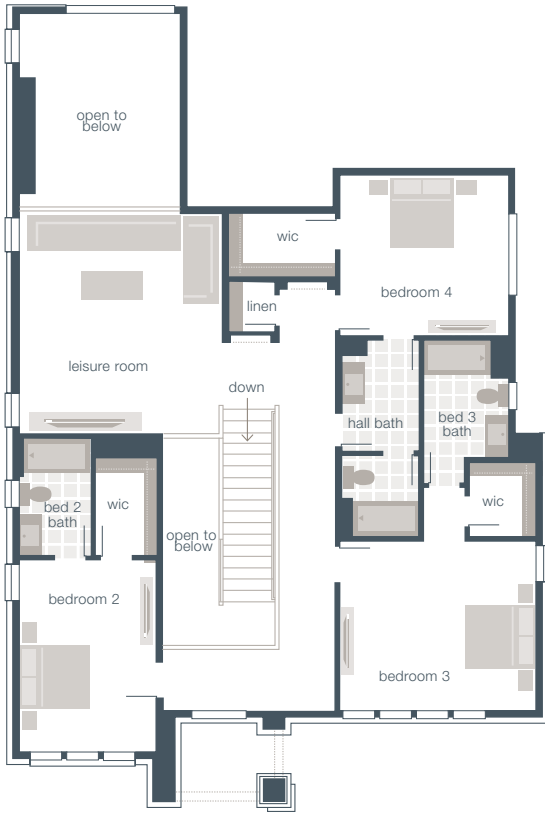


MAINVUETM
HOMES

mainvuehomes.com



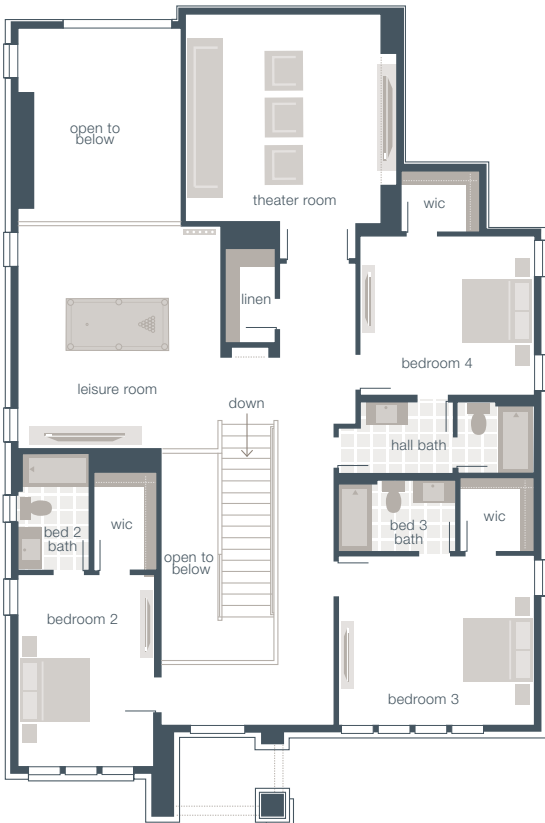
BALI
5 BEDROOMS



BALI
THEATER ROOM



BALI
5 BEDROOMS AND THEATER ROOM



**ASK US ABOUT
PRICING,
AVAILABILITY
AND HOW TO
PERSONALIZE
THIS DESIGN!**

**1.866.407.1020
MAINVUEHOMES.COM**



*The photo shown is used for illustrative purposes only and may not be an exact representation of the product. Facade and color scheme are subject to change. Contact our sales consultants for specific details. The finished square footage areas provided are calculated based on ANSI Z765-2193 standards as commissioned by National Association of Home Builders (NAHB). Finished square footage calculations were made based on plan dimensions only and may vary from finished square footage of the home as built.